



# SPECIFICATIONS FOR TANK HEADS

## TYPES

- Stainless Steel, Aluminum, Carbon and Alloy Heads
- Hydroformed Heads
- Spun Heads
- Heat Transfer Heads
- Custom Heads
- ASME Certified
- Pressed Heads
- Flat Flanged Heads
- Conical Heads
- Elliptical Heads

## MATERIAL THICKNESS

- 18 gauge to 1/2" plate

## POLISHING

- 2B mill finish
- OPTION
- #4 finish ID and/or OD
  - # 7 finish ID and/or OD

## MACHINING (OPTIONAL)

- Edges machined square
- Edges beveled or tapered to your specification

## TOOLING

- We have a series of dies to form a standard range of head dimensions and profiles. We are also able to fabricate dies for custom configurations. Please discuss your specific needs with your sales representative.

## MATERIAL THICKNESSES AND SIZE CAPABILITIES

### ASME & STANDARD FLANGED & DISHED HEADS

Diameter 9" to 162"  
Thicknesses 14 ga to 1/2"

### FLANGED ONLY

Diameters 14" to 180"  
Thicknesses 14 ga to 1/2"

### ELLIPTICAL FLANGED AND DISHED HEADS

A variety of sizes available  
Thicknesses 12 ga to 8 ga  
0.190" to 0.250" for aluminum

### DISHED ONLY HEADS

Diameters 10" to 162"  
Thicknesses 18 ga to 1/2"

### FLANGED & REVERSE DISHED HEADS

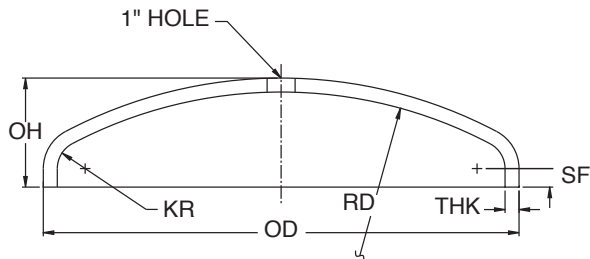
Diameters 24" to 152"  
Thicknesses 14 ga to 1/4"

### CONICAL HEADS

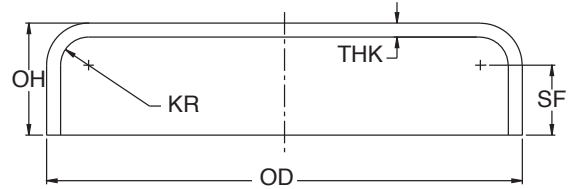
Diameters 9" to 144"  
Thicknesses 14 ga to 3/8"

### DISHED & FLARED HEADS

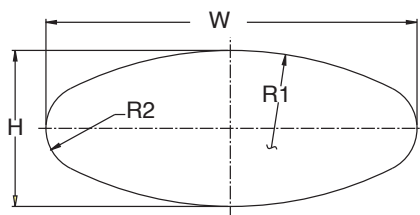
Diameters 24" ID to 162" OD  
Thicknesses 14 ga to 1/2"



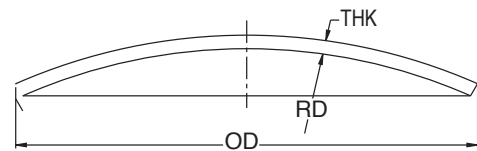
**STANDARD FLANGED & DISHED HEAD**



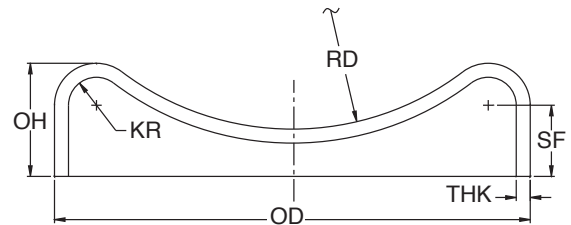
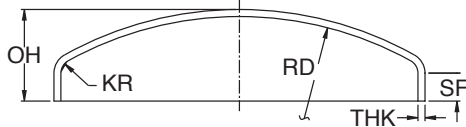
**FLANGED ONLY HEAD**



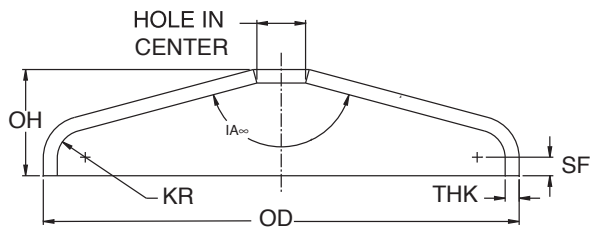
**ELLIPTICAL FLANGED & DISHED HEAD**



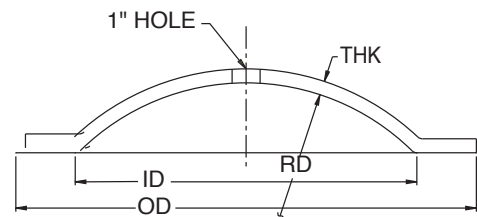
**DISHED HEAD ONLY**



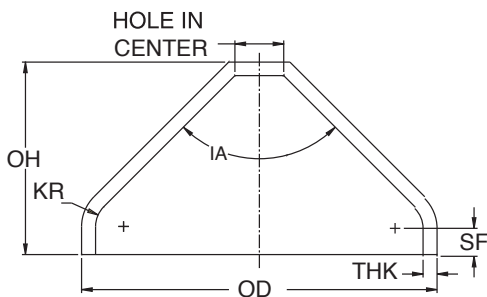
**FLANGED & REVERSE DISHED HEAD**



**FLANGED CONICAL HEAD**



**DISHED & FLARED HEAD**



**FLANGED CONICAL HEAD**

- KEY  
 OD = OUTSIDE DIAMETER  
 THK = THICKNESS  
 OH = OVERALL HEIGHT  
 SF = STRAIGHT FLANGE  
 KR = KNUCKLE RADIUS  
 RD = RADIUS OF DISH  
 R1 = RADIUS  
 R2 = RADIUS  
 W = WIDTH  
 H = HEIGHT  
 IA = INCLUDED ANGLE