

DATASHEET



Kest-Lock, the patented Aseptic quick connection for tanks and pipes

Kest-Lock, the unique quick snap connection

The Kest-lock unites the advantages of a traditional TC-clamp with an aseptic tank or pipe connection, in a new innovative design.

Kest-Lock with the unique quick coupling and the aseptic weld-in flange gives flush surface inside the tank. And it is develop for critical applications where aseptic design, easy and safe handling are essentials, such as SIP/CIP processes.

Kest-Lock is developed with focus on the aseptic demands and user friendliness. Kest-Lock is designed according to criteria of ASME BPE, in accordance to surface finish, material, clean ability, dimensions and aseptic design.

The operation of Kest-Lock requires no tools for connect or disconnect equipment. The design of the snap-rings makes it easy to connect equipment with a safe and simple design.

The Kest-Lock is available in two different types: The Snap and the Basic.

Kest-Lock Flanges are designed to fit to clamp ferrules acc to ISO 2852, ASME BPE and DIN 32676.

The **Kest-Lock Snap** with the unique snap function for one hand operation and the equipment is possible to push into the Kest-Lock.

The **Kest-Lock Basic** is a similar version that requires tools for mounting, but still with the feature that the clamp is pre-mounted on the weld-in flange.

Assembly - Kest-Lock Snap

Kest-Lock consists of a weld-in flange, for tank or pipe mounting, along with a two piece ring which is pre-mounted on the weld-in flange. To connect, insert the equipment between the snap-rings and tighten the locking screw. To disconnect, loosen the screw and extract the equipment.

Kest-Lock

Patented

Standards:

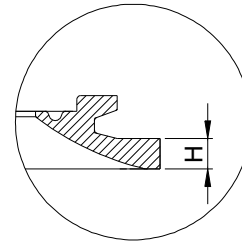
The Kest-Lock is available in most common pipe standard in the Pharmaceutical and Food industry. Sizes from TC25 to TC106

SMS	ASME	DIN	ISO
3008	BPE	11850	1127

Height:

The Kest-Lock tank weld in flange is available in different weld in heights, range from 6 mm to 51 mm.

6	12	25	38	51
---	----	----	----	----



Key code for the Kest-Lock.

Kest-Lock Snap Ring: KLS-[TC-size]-[Nut type]
 Kest-Lock Basic Ring: KLB-[TC-size]-[Nut type]
 Kest-Lock Tank welding flange: KLTF-[TC-size]-[pipe std & size]-[Dy]-[H]
 Kest-Lock Pipe welding flange: KLPF-[TC-size]-[pipe std & size]-[L]
 Nut types: Ball joint nut [BJN] or Internal hex screw [IHS]

For Product Code for each product, see the following pages type and standards

Combine the parts

Pipe standard on the tank/pipe flange have no effect on the locking part. Only note that the TC must be the same size.

Example:

KLS-TC50-BJN + KLTF-TC50-SMS25-85-6



Installation– Welding of the Tank or Pipe flange of the Kest-Lock

Note!

Before welding the vessel nozzle, read the welding instructions.
 Always use the welding tool to secure performance after welding.
 See Welding Instruction: *Kest-WI-2007*



Assemble the Kest-Lock snap ring on the tank flange



Kest-Lock tank flange. Same tank flange can be used for both Kest-Lock Snap and Kest-Lock basic.



Check TC size



Unscrew the nut and open the jaws of the snap ring completely. Enter the ring on the flange.



The Kest-Lock snap ring is now mounted on the flange completely.

And ready for operation

Operation– To mount a component into the Kest-Lock



Open the screw. Insert a standard TC gasket, Silicon, EPDM Viton or PTFE



Push in the component into the snap ring. Ensure the snap ring is enclosed to the TC flange of the component



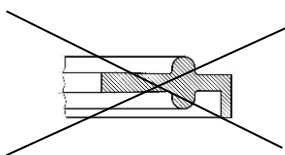
Tighten the ball joint screw. Secure that is properly tightened.



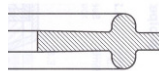
A component mounted into the Kest-Lock

**Note! After mounting a component– Secure that the screw is tighten before pressurize the system!
Before opening the Kest-Lock secure that no pressure is in the system**

TC gasket type



ISO 2852 type A



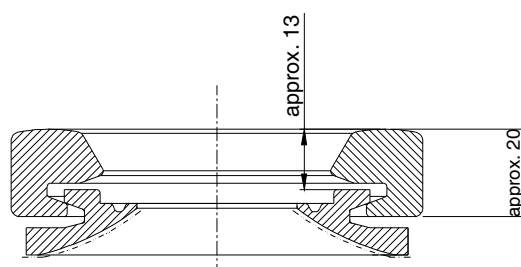
ISO 2852 type B

TC Gasket dimension according to ISO 2852.

Clamp Ferrule Geometry according to:

- ASME BPE table DT-5-2, and figure SD-1
- DIN 32 676
- ISO 2852

Assembly drawing of a Kest-Lock with main measurements

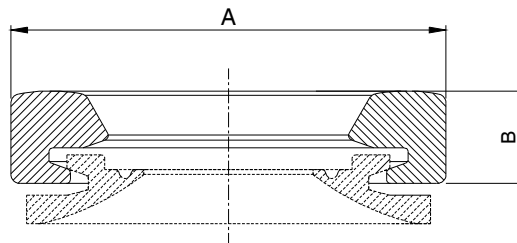


Specifications - Locking part


Material Grade	EN 1.4404	ASTM 316L or ASME 316L
Material requirement	EN 10 272/10028-7	A479/A240 or SA479/SA240
Documentation	Heat Certificate 3.1 acc. to EN 10 204	
Surface finish	Ra ≤ 1.6 µm	
Design Temperature	[-80°C to 200°C] [112°F to 392°F]	
Design Pressure	[-1 bar(g) to + 7 bar(g)] [-14.5 psi to 101.5 psi]	
Marking	The Kest-Lock locking ring is marked with brand, material grade and heat number	
Packing	Each product is sealed in vacuum plastic bag, labelled with art.number and packed in a box	
Gaskets	The Kest-Lock is designed for use of standard gaskets acc. to ISO 2852 type B, see picture. ASME BPE DT-5-2 and figure SD-1. Ferrule acc to DIN 32 676	
Standard	The Kest-Lock is designed for clamp couplings acc ISO 2852, ASME BPE, DIN 32 676	
Quality Assurance	Each product is controlled and tested acc. to Kest Technology quality assurance system	




Kest-Lock Snap



Kest-Lock Basic

		Product code	A [mm]	B [mm]
Ke	with ball-joint nut,	KLS-TC25-BJN	59	20
Kest-Lock Snap ring TC34	with ball-joint nut,	KLS-TC34-BJN	70	20
Kest-Lock Snap ring TC50,5	with ball-joint nut,	KLS-TC50-BJN	85	20
Kest-Lock Snap ring TC64	with ball-joint nut,	KLS-TC64-BJN	99	20
Kest-Lock Snap ring TC77,5	with ball-joint nut,	KLS-TC77-BJN	112	22
Kest-Lock Snap ring TC91	with ball-joint nut,	KLS-TC91-BJN	126	22
Kest-Lock Snap ring TC106	with ball-joint nut,	KLS-TC106-BJN	146	22

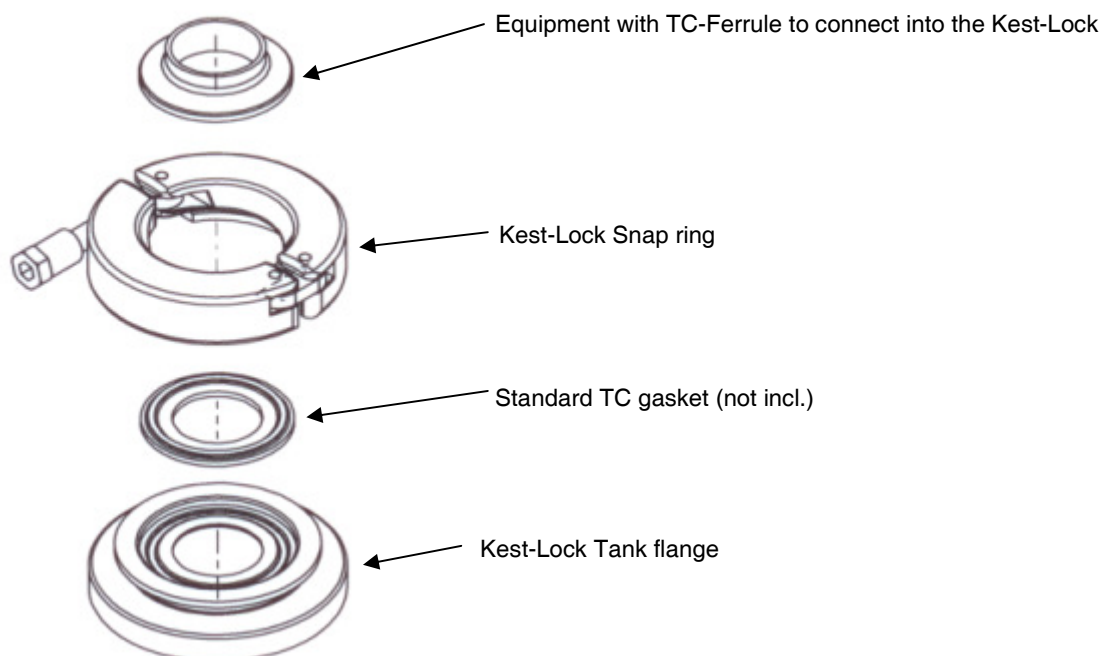
		Product code	A	B
Kest-Lock Basic ring TC25	with internal hex. screw	KLB-TC25-IHS	59	20
Kest-Lock Basic ring TC34	with internal hex. screw	KLB-TC34-IHS	70	20
Kest-Lock Basic ring TC50,5	with internal hex. screw	KLB-TC50-IHS	85	20
Kest-Lock Basic ring TC64	with internal hex. screw	KLB-TC64-IHS	99	20
Kest-Lock Basic ring TC77,5	with internal hex. screw	KLB-TC77-IHS	112	22
Kest-Lock Basic ring TC91	with internal hex. screw	KLB-TC91-IHS	126	22
Kest-Lock Basic ring TC106	with internal hex. screw	KLB-TC106-IHS	146	22

Specifications - Tank flange

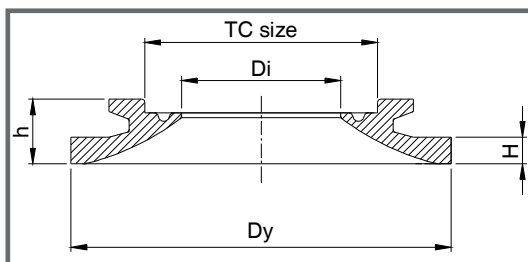
Material Grade	EN 1.4435	ASTM 316L or ASME 316L
Material requirement	EN 10 272/10028-7	A479/A240 or SA479/SA240
Documentation	Heat Certificate 3.1 acc. to EN 10 204	
Surface finish	Ra ≤ 0.5 µm internal (polished)	Ra ≤ 1.6 µm outer
Design Temperature	[-80°C to 200°C] [112°F to 392°F]	
Design Pressure	[-1 bar(g) to + 7 bar(g)] [-14.5 psi to 101.5 psi]	
Marking	The Kest-Lock weld-in flange is marked with material grade and heat number	
Packing	Each flange is sealed in vacuum plastic bag, labelled with art. number and packed in a box	
Gaskets	The Kest-Lock is designed for use of standard gaskets acc. to ISO 2852 type B, see picture, ASME BPE DT-5-2 and figure SD-1. Ferrule acc to DIN 32 676	
Standards	The Kest-Lock is designed for clamp couplings acc ISO 2852, ASME BPE, DIN 32 676	
Quality Assurance	Each product is controlled and tested acc. to Kest Technology quality assurance system	

Detail information, with measurements and products codes, for Kest-Lock Tank flange and Kest-Lock Pipe flange, are specified in the following pages.

Kest-Lock Snap General view

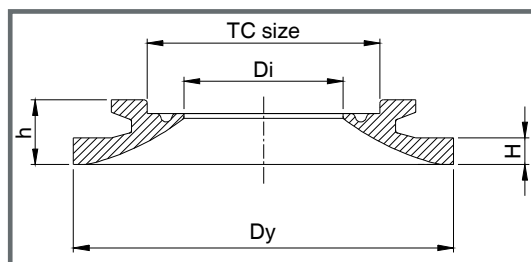


Other Material such as: EN 1.4539 (904L), 1.4547 (254 SMO®), Hastalloy® etc can be supplied in tank flange on request. Please contact Kest Technology for information.



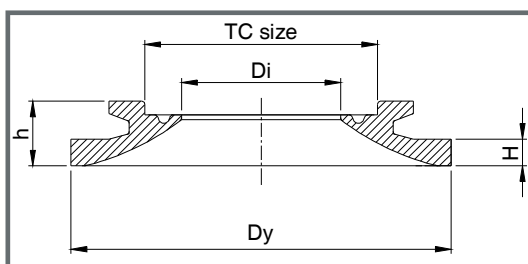
SMS 3008

Description	Product code	TC-size	Dy	Di	H	h
		[mm]	[mm]	[mm]	[mm]	[mm]
SMS 12x1.0 TC25						
Kest-Lock Tank Flange TC25, For pipe 12x1.0 ,weld height 6 mm	KLTF-TC25-SMS12-55-6	25	55	10.0	6	14.5
Kest-Lock Tank Flange TC25, For pipe 12x1.0 ,weld height 12 mm	KLTF-TC25-SMS12-55-12	25	55	10.0	12	20.5
Kest-Lock Tank Flange TC25, For pipe 12x1.0 ,weld height 25 mm	KLTF-TC25-SMS12-55-25	25	55	10.0	25	33.5
Kest-Lock Tank Flange TC25, For pipe 12x1.0 ,weld height 38 mm	KLTF-TC25-SMS12-55-38	25	55	10.0	38	46.5
Kest-Lock Tank Flange TC25, For pipe 12x1.0 ,weld height 51 mm	KLTF-TC25-SMS12-55-51	25	55	10.0	51	59.5
SMS 18x1.5 TC25						
Kest-Lock Tank Flange TC25, For pipe 18x1.5 ,weld height 6 mm	KLTF-TC25-SMS18-55-6	25	55	15.0	6	14.5
Kest-Lock Tank Flange TC25 ,For pipe 18x1.5 ,weld height 12 mm	KLTF-TC25-SMS18-55-12	25	55	15.0	12	20.5
Kest-Lock Tank Flange TC25, For pipe 18x1.5 ,weld height 25 mm	KLTF-TC25-SMS18-55-25	25	55	15.0	25	33.5
Kest-Lock Tank Flange TC25, For pipe 18x1.5 ,weld height 38 mm	KLTF-TC25-SMS18-55-38	25	55	15.0	38	46.5
Kest-Lock Tank Flange TC25, For pipe 18x1.5 ,weld height 51 mm	KLTF-TC25-SMS18-55-51	25	55	15.0	51	59.5
SMS 25x1.2 TC50.5						
Kest-Lock Tank Flange TC50,5, For pipe 25x1.2 ,weld height 6 mm	KLTF-TC50-SMS25-85-6	50.5	85	22.6	6	14.5
Kest-Lock Tank Flange TC50,5, For pipe 25x1.2 ,weld height 12 mm	KLTF-TC50-SMS25-85-12	50.5	85	22.6	12	20.5
Kest-Lock Tank Flange TC50,5, For pipe 25x1.2 ,weld height 25 mm	KLTF-TC50-SMS25-85-25	50.5	85	22.6	25	33.5
Kest-Lock Tank Flange TC50,5, For pipe 25x1.2 ,weld height 38 mm	KLTF-TC50-SMS25-85-38	50.5	85	22.6	38	46.5
Kest-Lock Tank Flange TC50,5, For pipe 25x1.2 ,weld height 51 mm	KLTF-TC50-SMS25-85-51	50.5	85	22.6	51	59.5
SMS 38x1.2 TC50.5						
Kest-Lock Tank Flange TC50.5, For pipe 38x1.2 ,weld height 6 mm	KLTF-TC50-SMS38-85-6	50.5	85	35.6	6	14.5
Kest-Lock Tank Flange TC50.5, For pipe 38x1.2 ,weld height 12 mm	KLTF-TC50-SMS38-85-12	50.5	85	35.6	12	20.5
Kest-Lock Tank Flange TC50.5, For pipe 38x1.2 ,weld height 25 mm	KLTF-TC50-SMS38-85-25	50.5	85	35.6	25	33.5
Kest-Lock Tank Flange TC50.5, For pipe 38x1.2 ,weld height 38 mm	KLTF-TC50-SMS38-85-38	50.5	85	35.6	38	46.5
Kest-Lock Tank Flange TC50.5, For pipe 38x1.2 ,weld height 51 mm	KLTF-TC50-SMS38-85-51	50.5	85	35.6	51	59.5
SMS 51x1.2 TC64						
Kest-Lock Tank Flange TC64, For pipe 51x1.2 ,weld height 6 mm	KLTF-TC64-SMS51-100-6	64	100	48.6	6	14.5
Kest-Lock Tank Flange TC64, For pipe 51x1.2 ,weld height 12 mm	KLTF-TC64-SMS51-100-12	64	100	48.6	12	20.5
Kest-Lock Tank Flange TC64, For pipe 51x1.2 ,weld height 25 mm	KLTF-TC64-SMS51-100-25	64	100	48.6	25	33.5
Kest-Lock Tank Flange TC64, For pipe 51x1.2 ,weld height 38 mm	KLTF-TC64-SMS51-100-38	64	100	48.6	38	46.5
Kest-Lock Tank Flange TC64, For pipe 51x1.2 ,weld height 51 mm	KLTF-TC64-SMS51-100-51	64	100	48.6	51	59.5
SMS 63.5x1.6 TC77.5						
Kest-Lock Tank Flange TC77.5, For pipe 63.5x1.6 ,weld height 6 mm	KLTF-TC77-SMS63-112-6	77.5	112	60.3	6	14.5
Kest-Lock Tank Flange TC77.5, For pipe 63.5x1.6 ,weld height 12 mm	KLTF-TC77-SMS63-112-12	77.5	112	60.3	12	20.5
Kest-Lock Tank Flange TC77.5, For pipe 63.5x1.6 ,weld height 25 mm	KLTF-TC77-SMS63-112-25	77.5	112	60.3	25	33.5
Kest-Lock Tank Flange TC77.5, For pipe 63.5x1.6 ,weld height 38 mm	KLTF-TC77-SMS63-112-38	77.5	112	60.3	38	46.5
Kest-Lock Tank Flange TC77.5, For pipe 63.5x1.6 ,weld height 51 mm	KLTF-TC77-SMS63-112-51	77.5	112	60.3	51	59.5
SMS 76.1x1.6 TC91						
Kest-Lock Tank Flange TC91, For pipe 76.1x1.6 ,weld height 6 mm	KLTF-TC91-SMS76-131-6	91	131	72.9	6	14.5
Kest-Lock Tank Flange TC91, For pipe 76.1x1.6 ,weld height 12 mm	KLTF-TC91-SMS76-131-12	91	131	72.9	12	20.5
Kest-Lock Tank Flange TC91, For pipe 76.1x1.6 ,weld height 25 mm	KLTF-TC91-SMS76-131-25	91	131	72.9	25	33.5
Kest-Lock Tank Flange TC91, For pipe 76.1x1.6 ,weld height 38 mm	KLTF-TC91-SMS76-131-38	91	131	72.9	38	46.5
Kest-Lock Tank Flange TC91, For pipe 76.1x1.6 ,weld height 51 mm	KLTF-TC91-SMS76-131-51	91	131	72.9	51	59.5



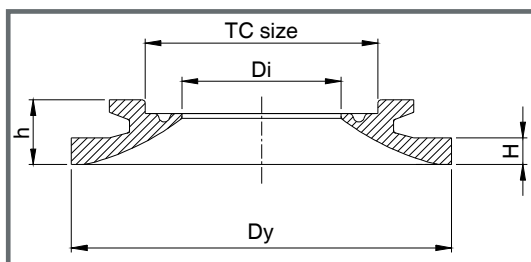
**ASTM 269/270
(ASME BPE)**

Description	Product code	TC-size	Dy	Di	H	h
		[mm]	[mm]	[mm]	[mm]	[mm]
ASTM 1/2" (12.7x1.65) TC 1/2" (TC25)						
Kest-Lock Tank Flange 1/2" TC (25), For pipe 1/2" (12.7x1.65) ,weld height 6 mm	KLTF-TC25-ASTM0.5-55-6	25	55	9.4	6	14.5
Kest-Lock Tank Flange 1/2" TC (25) ,For pipe 1/2" (12.7x1.65) ,weld height 12 mm	KLTF-TC25-ASTM0.5-55-12	25	55	9.4	12	20.5
Kest-Lock Tank Flange 1/2" TC (25) ,For pipe 1/2" (12.7x1.65) ,weld height 25 mm	KLTF-TC25-ASTM0.5-55-25	25	55	9.4	25	33.5
Kest-Lock Tank Flange 1/2" TC (25) ,For pipe 1/2" (12.7x1.65) ,weld height 38 mm	KLTF-TC25-ASTM0.5-55-38	25	55	9.4	38	46.5
Kest-Lock Tank Flange 1/2" TC (25) ,For pipe 1/2" (12.7x1.65) ,weld height 51 mm	KLTF-TC25-ASTM0.5-55-51	25	55	9.4	51	59.5
ASTM 3/4" (19.1x1.65) TC 3/4" (TC25)						
Kest-Lock Tank Flange 3/4" TC (25), For pipe 3/4" (19.1x1.65) ,weld height 6 mm	KLTF-TC25-ASTM0.75-55-6	25	55	15.8	6	14.5
Kest-Lock Tank Flange 3/4" TC (25), For pipe 3/4" (19.1x1.65) ,weld height 12 mm	KLTF-TC25-ASTM0.75-55-12	25	55	15.8	12	20.5
Kest-Lock Tank Flange 3/4" TC (25), For pipe 3/4" (19.1x1.65) ,weld height 25 mm	KLTF-TC25-ASTM0.75-55-25	25	55	15.8	25	33.5
Kest-Lock Tank Flange 3/4" TC (25), For pipe 3/4" (19.1x1.65) ,weld height 38 mm	KLTF-TC25-ASTM0.75-55-38	25	55	15.8	38	46.5
Kest-Lock Tank Flange 3/4" TC (25), For pipe 3/4" (19.1x1.65) ,weld height 51 mm	KLTF-TC25-ASTM0.75-55-51	25	55	15.8	51	59.5
ASTM 1" (25.4x1.65) TC 1" (TC50.5)						
Kest-Lock Tank Flange 1" TC (50,5), For pipe 1" (25.4x1.65) ,weld height 6 mm	KLTF-TC50-ASTM1.0-85-6	50.5	85	22.1	6	14.5
Kest-Lock Tank Flange 1" TC (50,5), For pipe 1" (25.4x1.65) ,weld height 12 mm	KLTF-TC50-ASTM1.0-85-12	50.5	85	22.1	12	20.5
Kest-Lock Tank Flange 1" TC (50,5), For pipe 1" (25.4x1.65) ,weld height 25 mm	KLTF-TC50-ASTM1.0-85-25	50.5	85	22.1	25	33.5
Kest-Lock Tank Flange 1" TC (50,5), For pipe 1" (25.4x1.65) ,weld height 38 mm	KLTF-TC50-ASTM1.0-85-38	50.5	85	22.1	38	46.5
Kest-Lock Tank Flange 1" TC (50,5), For pipe 1" (25.4x1.65) ,weld height 51 mm	KLTF-TC50-ASTM1.0-85-51	50.5	85	22.1	51	59.5
ASTM 1 1/2" (38.1x1.65) TC 1 1/2" (TC50.5)						
Kest-Lock Tank Flange 1 1/2" TC (50,5), For pipe 1 1/2" (38.1x1.65) ,weld height 6 mm	KLTF-TC50-ASTM1.5-85-6	50.5	85	34.8	6	14.5
Kest-Lock Tank Flange 1 1/2" TC (50,5), For pipe 1 1/2" (38.1x1.65) ,weld height 12 mm	KLTF-TC50-ASTM1.5-85-12	50.5	85	34.8	12	20.5
Kest-Lock Tank Flange 1 1/2" TC (50,5), For pipe 1 1/2" (38.1x1.65) ,weld height 25 mm	KLTF-TC50-ASTM1.5-85-25	50.5	85	34.8	25	33.5
Kest-Lock Tank Flange 1 1/2" TC (50,5), For pipe 1 1/2" (38.1x1.65) ,weld height 38 mm	KLTF-TC50-ASTM1.5-85-38	50.5	85	34.8	38	46.5
Kest-Lock Tank Flange 1 1/2" TC (50,5), For pipe 1 1/2" (38.1x1.65) ,weld height 51 mm	KLTF-TC50-ASTM1.5-85-51	50.5	85	34.8	51	59.5
ASTM 2" (50.8x1.65) TC 2" (TC64)						
Kest-Lock Tank Flange 2" TC (64), For pipe 2" (50.8x1.65) ,weld height 6 mm	KLTF-TC64-ASTM2.0-100-6	64	100	47.5	6	14.5
Kest-Lock Tank Flange 2" TC (64), For pipe 2" (50.8x1.65) ,weld height 12 mm	KLTF-TC64-ASTM2.0-100-12	64	100	47.5	12	20.5
Kest-Lock Tank Flange 2" TC (64), For pipe 2" (50.8x1.65) ,weld height 25 mm	KLTF-TC64-ASTM2.0-100-25	64	100	47.5	25	33.5
Kest-Lock Tank Flange 2" TC (64), For pipe 2" (50.8x1.65) ,weld height 38 mm	KLTF-TC64-ASTM2.0-100-38	64	100	47.5	38	46.5
Kest-Lock Tank Flange 2" TC (64), For pipe 2" (50.8x1.65) ,weld height 51 mm	KLTF-TC64-ASTM2.0-100-51	64	100	47.5	51	59.5
ASTM 2.5" (63.5x1.65) TC 2.5" (TC77.5)						
Kest-Lock Tank Flange 2.5" TC (77.5), For pipe 2" (63.5x1.6) ,weld height 6 mm	KLTF-TC77-ASTM2.5-112-6	77.5	112	60.2	6	14.5
Kest-Lock Tank Flange 2.5" TC (77.5), For pipe 2" (63.5x1.6) ,weld height 12 mm	KLTF-TC77-ASTM2.5-112-12	77.5	112	60.2	12	20.5
Kest-Lock Tank Flange 2.5" TC (77.5), For pipe 2" (63.5x1.6) ,weld height 25 mm	KLTF-TC77-ASTM2.5-112-25	77.5	112	60.2	25	33.5
Kest-Lock Tank Flange 2.5" TC (77.5), For pipe 2" (63.5x1.6) ,weld height 38 mm	KLTF-TC77-ASTM2.5-112-38	77.5	112	60.2	38	46.5
Kest-Lock Tank Flange 2.5" TC (77.5), For pipe 2" (63.5x1.6) ,weld height 51 mm	KLTF-TC77-ASTM2.5-112-51	77.5	112	60.2	51	59.5
ASTM 3" (76.2x1.65) TC 3" (TC91)						
Kest-Lock Tank Flange 3" TC (91), For pipe 3" (76.2x1.65) ,weld height 6 mm	KLTF-TC91-ASTM3.0-131-6	91	131	72.9	6	14.5
Kest-Lock Tank Flange 3" TC (91), For pipe 3" (76.2x1.65) ,weld height 12 mm	KLTF-TC91-ASTM3.0-131-12	91	131	72.9	12	20.5
Kest-Lock Tank Flange 3" TC (91), For pipe 3" (76.2x1.65) ,weld height 25 mm	KLTF-TC91-ASTM3.0-131-25	91	131	72.9	25	33.5
Kest-Lock Tank Flange 3" TC (91), For pipe 3" (76.2x1.65) ,weld height 38 mm	KLTF-TC91-ASTM3.0-131-38	91	131	72.9	38	46.5
Kest-Lock Tank Flange 3" TC (91), For pipe 3" (76.2x1.65) ,weld height 51 mm	KLTF-TC91-ASTM3.0-131-51	91	131	72.9	51	59.5



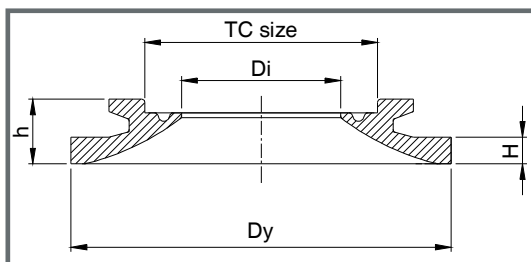
ISO 1127

Description	Product code	TC-size	Dy	Di	H	h
		[mm]	[mm]	[mm]	[mm]	[mm]
ISO DN8 (13.5x1.6) TC25						
Kest-Lock Tank Flange TC25, For pipe DN8 (13.5x1.6) ,weld height 6 mm	KLTF-TC25-ISO8-55-6	25	55	10.3	6	14.5
Kest-Lock Tank Flange TC25, For pipe DN8 (13.5x1.6) ,weld height 12 mm	KLTF-TC25-ISO8-55-12	25	55	10.3	12	20.5
Kest-Lock Tank Flange TC25, For pipe DN8 (13.5x1.6) ,weld height 25 mm	KLTF-TC25-ISO8-55-25	25	55	10.3	25	33.5
Kest-Lock Tank Flange TC25, For pipe DN8 (13.5x1.6) ,weld height 38 mm	KLTF-TC25-ISO8-55-38	25	55	10.3	38	46.5
Kest-Lock Tank Flange TC25, For pipe DN8 (13.5x1.6) ,weld height 51 mm	KLTF-TC25-ISO8-55-51	25	55	10.3	51	59.5
ISO DN10 (17.2x1.6) TC34						
Kest-Lock Tank Flange TC34, For pipe DN10 (17.2x1.6) ,weld height 6 mm	KLTF-TC34-ISO10-70-6	34	70	14.0	6	14.5
Kest-Lock Tank Flange TC34, For pipe DN10 (17.2x1.6) ,weld height 12 mm	KLTF-TC34-ISO10-70-12	34	70	14.0	12	20.5
Kest-Lock Tank Flange TC34, For pipe DN10 (17.2x1.6) ,weld height 25 mm	KLTF-TC34-ISO10-70-25	34	70	14.0	25	33.5
Kest-Lock Tank Flange TC34, For pipe DN10 (17.2x1.6) ,weld height 38 mm	KLTF-TC34-ISO10-70-38	34	70	14.0	38	46.5
Kest-Lock Tank Flange TC34, For pipe DN10 (17.2x1.6) ,weld height 51 mm	KLTF-TC34-ISO10-70-51	34	70	14.0	51	59.5
ISO DN15 (21.3x1.6) TC34						
Kest-Lock Tank Flange TC34, For pipe DN15 (21.3x1.6) ,weld height 6 mm	KLTF-TC34-ISO15-70-6	34	70	18.1	6	14.5
Kest-Lock Tank Flange TC34, For pipe DN15 (21.3x1.6) ,weld height 12 mm	KLTF-TC34-ISO15-70-12	34	70	18.1	12	20.5
Kest-Lock Tank Flange TC34, For pipe DN15 (21.3x1.6) ,weld height 25 mm	KLTF-TC34-ISO15-70-25	34	70	18.1	25	33.5
Kest-Lock Tank Flange TC34, For pipe DN15 (21.3x1.6) ,weld height 38 mm	KLTF-TC34-ISO15-70-38	34	70	18.1	38	46.5
Kest-Lock Tank Flange TC34, For pipe DN15 (21.3x1.6) ,weld height 51 mm	KLTF-TC34-ISO15-70-51	34	70	18.1	51	59.5
ISO DN20 (26.9x1.6) TC50.5						
Kest-Lock Tank Flange TC34, For pipe DN20 (26.9x1.6) ,weld height 6 mm	KLTF-TC50-ISO20-85-6	50.5	85	23.7	6	14.5
Kest-Lock Tank Flange TC34, For pipe DN20 (26.9x1.6) ,weld height 12 mm	KLTF-TC50-ISO20-85-12	50.5	85	23.7	12	20.5
Kest-Lock Tank Flange TC34, For pipe DN20 (26.9x1.6) ,weld height 25 mm	KLTF-TC50-ISO20-85-25	50.5	85	23.7	25	33.5
Kest-Lock Tank Flange TC34, For pipe DN20 (26.9x1.6) ,weld height 38 mm	KLTF-TC50-ISO20-85-38	50.5	85	23.7	38	46.5
Kest-Lock Tank Flange TC34, For pipe DN20 (26.9x1.6) ,weld height 51 mm	KLTF-TC50-ISO20-85-51	50.5	85	23.7	51	59.5
ISO DN25 (33.7x1.6) TC50.5						
Kest-Lock Tank Flange TC50.5, For pipe DN25 (33.7x2.0) ,weld height 6 mm	KLTF-TC50-ISO25-85-6	50.5	85	29.7	6	14.5
Kest-Lock Tank Flange TC50.5, For pipe DN25 (33.7x2.0) ,weld height 12 mm	KLTF-TC50-ISO25-85-12	50.5	85	29.7	12	20.5
Kest-Lock Tank Flange TC50.5, For pipe DN25 (33.7x2.0) ,weld height 25 mm	KLTF-TC50-ISO25-85-25	50.5	85	29.7	25	33.5
Kest-Lock Tank Flange TC50.5, For pipe DN25 (33.7x2.0) ,weld height 38 mm	KLTF-TC50-ISO25-85-38	50.5	85	29.7	38	46.5
Kest-Lock Tank Flange TC50.5, For pipe DN25 (33.7x2.0) ,weld height 51 mm	KLTF-TC50-ISO25-85-51	50.5	85	29.7	51	59.5
ISO DN32 (42.4x2.0) TC64						
Kest-Lock Tank Flange TC64, For pipe DN32 (42.4x2.0) ,weld height 6 mm	KLTF-TC64-ISO32-100-6	64	100	38.4	6	14.5
Kest-Lock Tank Flange TC64, For pipe DN32 (42.4x2.0) ,weld height 12 mm	KLTF-TC64-ISO32-100-12	64	100	38.4	12	20.5
Kest-Lock Tank Flange TC64, For pipe DN32 (42.4x2.0) ,weld height 25 mm	KLTF-TC64-ISO32-100-25	64	100	38.4	25	33.5
Kest-Lock Tank Flange TC64, For pipe DN32 (42.4x2.0) ,weld height 38 mm	KLTF-TC64-ISO32-100-38	64	100	38.4	38	46.5
Kest-Lock Tank Flange TC64, For pipe DN32 (42.4x2.0) ,weld height 51 mm	KLTF-TC64-ISO32-100-51	64	100	38.4	51	59.5
ISO DN40 (48.3x2.0) TC64						
Kest-Lock Tank Flange TC64, For pipe DN40 (48.3x2.0) ,weld height 6 mm	KLTF-TC64-ISO40-100-6	64	100	44.3	6	14.5
Kest-Lock Tank Flange TC64, For pipe DN40 (48.3x2.0) ,weld height 12 mm	KLTF-TC64-ISO40-100-12	64	100	44.3	12	20.5
Kest-Lock Tank Flange TC64, For pipe DN40 (48.3x2.0) ,weld height 25 mm	KLTF-TC64-ISO40-100-25	64	100	44.3	25	33.5
Kest-Lock Tank Flange TC64, For pipe DN40 (48.3x2.0) ,weld height 38 mm	KLTF-TC64-ISO40-100-38	64	100	44.3	38	46.5
Kest-Lock Tank Flange TC64, For pipe DN40 (48.3x2.0) ,weld height 51 mm	KLTF-TC64-ISO40-100-51	64	100	44.3	51	59.5



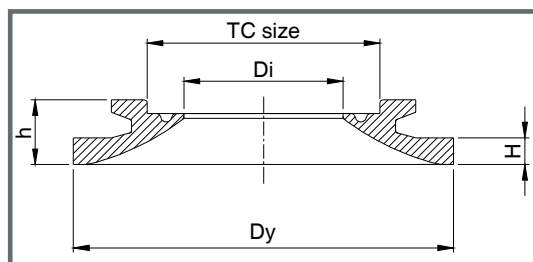
ISO 1127 continue

Description	Product code	TC-size	Dy	Di	H	h
		[mm]	[mm]	[mm]	[mm]	[mm]
ISO DN50 (60.3x2.0) TC77.5						
Kest-Lock Tank Flange TC77.5, For pipe DN50 (60.3x2.0) ,weld height 6 mm	KLTF-TC77-ISO50-112-6	77.5	112	56.3	6	14.5
Kest-Lock Tank Flange TC77.5, For pipe DN50 (60.3x2.0) ,weld height 12 mm	KLTF-TC77-ISO50-112-12	77.5	112	56.3	12	20.5
Kest-Lock Tank Flange TC77.5, For pipe DN50 (60.3x2.0) ,weld height 25 mm	KLTF-TC77-ISO50-112-25	77.5	112	56.3	25	33.5
Kest-Lock Tank Flange TC77.5, For pipe DN50 (60.3x2.0) ,weld height 38 mm	KLTF-TC77-ISO50-112-38	77.5	112	56.3	38	46.5
Kest-Lock Tank Flange TC77.5, For pipe DN50 (60.3x2.0) ,weld height 51 mm	KLTF-TC77-ISO50-112-51	77.5	112	56.3	51	59.5
ISO DN65 (76.1x2.3) TC91						
Kest-Lock Tank Flange TC91, For pipe DN65 (76.1x2.3) ,weld height 6 mm	KLTF-TC91-ISO65-131-6	91	131	71.5	6	14.5
Kest-Lock Tank Flange TC91, For pipe DN65 (76.1x2.3) ,weld height 12 mm	KLTF-TC91-ISO65-131-12	91	131	71.5	12	20.5
Kest-Lock Tank Flange TC91, For pipe DN65 (76.1x2.3) ,weld height 25 mm	KLTF-TC91-ISO65-131-25	91	131	71.5	25	33.5
Kest-Lock Tank Flange TC91, For pipe DN65 (76.1x2.3) ,weld height 38 mm	KLTF-TC91-ISO65-131-38	91	131	71.5	38	46.5
Kest-Lock Tank Flange TC91, For pipe DN65 (76.1x2.3) ,weld height 51 mm	KLTF-TC91-ISO65-131-51	91	131	71.5	51	59.5
ISO DN80 (88.9x2.3) TC106						
Kest-Lock Tank Flange TC106, For pipe DN80 (88.9x2.3) ,weld height 6 mm	KLTF-TC106-ISO80-146-6	106	146	84.3	6	14.5
Kest-Lock Tank Flange TC106, For pipe DN80 (88.9x2.3) ,weld height 12 mm	KLTF-TC106-ISO80-146-12	106	146	84.3	12	20.5
Kest-Lock Tank Flange TC106, For pipe DN80 (88.9x2.3) ,weld height 25 mm	KLTF-TC106-ISO80-146-25	106	146	84.3	25	33.5
Kest-Lock Tank Flange TC106, For pipe DN80 (88.9x2.3) ,weld height 38 mm	KLTF-TC106-ISO80-146-38	106	146	84.3	38	46.5
Kest-Lock Tank Flange TC106, For pipe DN80 (88.9x2.3) ,weld height 51 mm	KLTF-TC106-ISO80-146-51	106	146	84.3	51	59.5



DIN 11 850

Description	Product code	TC-size	Dy	Di	H	h
DIN DN10 TC34		[mm]	[mm]	[mm]	[mm]	[mm]
Kest-Lock Tank Flange TC34, For pipe DN10 (12.0-14.0x1.0-2.0) ,weld height 6 mm	KLTF-TC34-DIN10-70-6	34	70	10.0	6	14.5
Kest-Lock Tank Flange TC34, For pipe DN10 (12.0-14.0x1.0-2.0) ,weld height 12 mm	KLTF-TC34-DIN10-70-12	34	70	10.0	12	20.5
Kest-Lock Tank Flange TC34, For pipe DN10 (12.0-14.0x1.0-2.0) ,weld height 25 mm	KLTF-TC34-DIN10-70-25	34	70	10.0	25	33.5
Kest-Lock Tank Flange TC34, For pipe DN10 (12.0-14.0x1.0-2.0) ,weld height 38 mm	KLTF-TC34-DIN10-70-38	34	70	10.0	38	46.5
Kest-Lock Tank Flange TC34, For pipe DN10 (12.0-14.0x1.0-2.0) ,weld height 51 mm	KLTF-TC34-DIN10-70-51	34	70	10.0	51	59.5
DIN DN15 TC34						
Kest-Lock Tank Flange TC34, For pipe DN15 (18.0-20.0x1.0-2.0) ,weld height 6 mm	KLTF-TC34-DIN15-70-6	34	70	15.0	6	14.5
Kest-Lock Tank Flange TC34, For pipe DN15 (18.0-20.0x1.0-2.0) ,weld height 12 mm	KLTF-TC34-DIN15-70-12	34	70	15.0	12	20.5
Kest-Lock Tank Flange TC34, For pipe DN15 (18.0-20.0x1.0-2.0) ,weld height 25 mm	KLTF-TC34-DIN15-70-25	34	70	15.0	25	33.5
Kest-Lock Tank Flange TC34, For pipe DN15 (18.0-20.0x1.0-2.0) ,weld height 38 mm	KLTF-TC34-DIN15-70-38	34	70	15.0	38	46.5
Kest-Lock Tank Flange TC34, For pipe DN15 (18.0-20.0x1.0-2.0) ,weld height 51 mm	KLTF-TC34-DIN15-70-51	34	70	15.0	51	59.5
DIN DN20 TC34						
Kest-Lock Tank Flange TC34, For pipe DN20 (22.0-24.0x1.0-2.0) ,weld height 6 mm	KLTF-TC34-DIN20-70-6	34	70	20.0	6	14.5
Kest-Lock Tank Flange TC34, For pipe DN20 (22.0-24.0x1.0-2.0) ,weld height 12 mm	KLTF-TC34-DIN20-70-12	34	70	20.0	12	20.5
Kest-Lock Tank Flange TC34, For pipe DN20 (22.0-24.0x1.0-2.0) ,weld height 25 mm	KLTF-TC34-DIN20-70-25	34	70	20.0	25	33.5
Kest-Lock Tank Flange TC34, For pipe DN20 (22.0-24.0x1.0-2.0) ,weld height 38 mm	KLTF-TC34-DIN20-70-38	34	70	20.0	38	46.5
Kest-Lock Tank Flange TC34, For pipe DN20 (22.0-24.0x1.0-2.0) ,weld height 51 mm	KLTF-TC34-DIN20-70-51	34	70	20.0	51	59.5
DIN DN25 TC50.5						
Kest-Lock Tank Flange TC50.5, For pipe DN25 (28.0-30.0x1.0-2.0) ,weld height 6 mm	KLTF-TC50-DIN25-85-6	50.5	85	26.0	6	14.5
Kest-Lock Tank Flange TC50.5, For pipe DN25 (28.0-30.0x1.0-2.0) ,weld height 12 mm	KLTF-TC50-DIN25-85-12	50.5	85	26.0	12	20.5
Kest-Lock Tank Flange TC50.5, For pipe DN25 (28.0-30.0x1.0-2.0) ,weld height 25 mm	KLTF-TC50-DIN25-85-25	50.5	85	26.0	25	33.5
Kest-Lock Tank Flange TC50.5, For pipe DN25 (28.0-30.0x1.0-2.0) ,weld height 38 mm	KLTF-TC50-DIN25-85-38	50.5	85	26.0	38	46.5
Kest-Lock Tank Flange TC50.5, For pipe DN25 (28.0-30.0x1.0-2.0) ,weld height 51 mm	KLTF-TC50-DIN25-85-51	50.5	85	26.0	51	59.5
DIN DN32 TC50.5						
Kest-Lock Tank Flange TC50.5, For pipe DN32 (34.0-36.0x1.0-2.0) ,weld height 6 mm	KLTF-TC50-DIN32-85-6	50.5	85	32.0	6	14.5
Kest-Lock Tank Flange TC50.5, For pipe DN32 (34.0-36.0x1.0-2.0) ,weld height 12 mm	KLTF-TC50-DIN32-85-12	50.5	85	32.0	12	20.5
Kest-Lock Tank Flange TC50.5, For pipe DN32 (34.0-36.0x1.0-2.0) ,weld height 25 mm	KLTF-TC50-DIN32-85-25	50.5	85	32.0	25	33.5
Kest-Lock Tank Flange TC50.5, For pipe DN32 (34.0-36.0x1.0-2.0) ,weld height 38 mm	KLTF-TC50-DIN32-85-38	50.5	85	32.0	38	46.5
Kest-Lock Tank Flange TC50.5, For pipe DN32 (34.0-36.0x1.0-2.0) ,weld height 51 mm	KLTF-TC50-DIN32-85-51	50.5	85	32.0	51	59.5
DIN DN40 TC50.5						
Kest-Lock Tank Flange TC50.5, For pipe DN40 (40.0-42.0x1.0-2.0) ,weld height 6 mm	KLTF-TC50-DIN40-85-6	50.5	85	38.0	6	14.5
Kest-Lock Tank Flange TC50.5, For pipe DN40 (40.0-42.0x1.0-2.0) ,weld height 12 mm	KLTF-TC50-DIN40-85-12	50.5	85	38.0	12	20.5
Kest-Lock Tank Flange TC50.5, For pipe DN40 (40.0-42.0x1.0-2.0) ,weld height 25 mm	KLTF-TC50-DIN40-85-25	50.5	85	38.0	25	33.5
Kest-Lock Tank Flange TC50.5, For pipe DN40 (40.0-42.0x1.0-2.0) ,weld height 38 mm	KLTF-TC50-DIN40-85-38	50.5	85	38.0	38	46.5
Kest-Lock Tank Flange TC50.5, For pipe DN40 (40.0-42.0x1.0-2.0) ,weld height 51 mm	KLTF-TC50-DIN40-85-51	50.5	85	38.0	51	59.5
DIN DN50 TC64						
Kest-Lock Tank Flange TC64, For pipe DN50 (52.0-54.0x1.0-2.0) ,weld height 6 mm	KLTF-TC64-DIN50-100-6	64	100	50.0	6	14.5
Kest-Lock Tank Flange TC64, For pipe DN50 (52.0-54.0x1.0-2.0) ,weld height 12 mm	KLTF-TC64-DIN50-100-12	64	100	50.0	12	20.5
Kest-Lock Tank Flange TC64, For pipe DN50 (52.0-54.0x1.0-2.0) ,weld height 25 mm	KLTF-TC64-DIN50-100-25	64	100	50.0	25	33.5
Kest-Lock Tank Flange TC64, For pipe DN50 (52.0-54.0x1.0-2.0) ,weld height 38 mm	KLTF-TC64-DIN50-100-38	64	100	50.0	38	46.5
Kest-Lock Tank Flange TC64, For pipe DN50 (52.0-54.0x1.0-2.0) ,weld height 51 mm	KLTF-TC64-DIN50-100-51	64	100	50.0	51	59.5

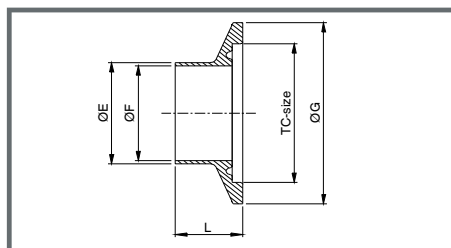


DIN 11 850 continue

Description	Product code	TC-size	Dy	Di	H	h
DIN DN65 TC91		[mm]	[mm]	[mm]	[mm]	[mm]
Kest-Lock Tank Flange TC91, For pipe DN65 (70.0x2.0) ,weld height 6 mm	KLTF-TC91-DIN65-131-6	91	131	66.0	6	14.5
Kest-Lock Tank Flange TC91, For pipe DN65 (70.0x2.0) ,weld height 12 mm	KLTF-TC91-DIN65-131-12	91	131	66.0	12	20.5
Kest-Lock Tank Flange TC91, For pipe DN65 (70.0x2.0) ,weld height 25 mm	KLTF-TC91-DIN65-131-25	91	131	66.0	25	33.5
Kest-Lock Tank Flange TC91, For pipe DN65 (70.0x2.0) ,weld height 38 mm	KLTF-TC91-DIN65-131-38	91	131	66.0	38	46.5
Kest-Lock Tank Flange TC91, For pipe DN65 (70.0x2.0) ,weld height 51 mm	KLTF-TC91-DIN65-131-51	91	131	66.0	51	59.5
DIN DN80 TC106						
Kest-Lock Tank Flange TC106, For pipe DN80 (85.0x2.0) ,weld height 6 mm	KLTF-TC106-DIN80-146-6	106	146	81.0	6	14.5
Kest-Lock Tank Flange TC106, For pipe DN80 (85.0x2.0) ,weld height 12 mm	KLTF-TC106-DIN80-146-12	106	146	81.0	12	20.5
Kest-Lock Tank Flange TC106, For pipe DN80 (85.0x2.0) ,weld height 25 mm	KLTF-TC106-DIN80-146-25	106	146	81.0	25	33.5
Kest-Lock Tank Flange TC106, For pipe DN80 (85.0x2.0) ,weld height 38 mm	KLTF-TC106-DIN80-146-38	106	146	81.0	38	46.5
Kest-Lock Tank Flange TC106, For pipe DN80 (85.0x2.0) ,weld height 51 mm	KLTF-TC106-DIN80-146-51	106	146	81.0	51	59.5

Specifications - Pipe flange & Blind TC-flange

Material Grade	EN 1.4404	ASTM 316L or ASME 316L
Material requirement	EN 10 272/10028-7	A479/A240 or SA479/SA240
Documentation	Heat Certificate 3.1 acc. to EN 10 204	
Surface finish	Ra ≤ 0.5 µm internal (polished)	Ra ≤ 1.6 µm outer
Design Temperature	[-80°C to 200°C] [112°F to 392°F]	
Design Pressure	[-1 bar(g) to + 7 bar(g)] [-14.5 psi to 101.5 psi]	
Marking	The Kest-Lock weld-in flange is marked with material grade and heat number	
Packing	Each flange is sealed in vacuum plastic bag, labelled with art. number and packed in a box	
Gaskets	The Kest-Lock is designed for use of standard gaskets acc. to ISO 2852 type B, see picture. ASME BPE DT-5-2 and figure SD-1. Ferrule acc to DIN 32 676	
Standard	The Kest-Lock is designed for clamp couplings acc ISO 2852, ASME BPE, DIN 32 676	
Quality Assurance	Each product is controlled and tested acc. to Kest Technology quality assurance system	



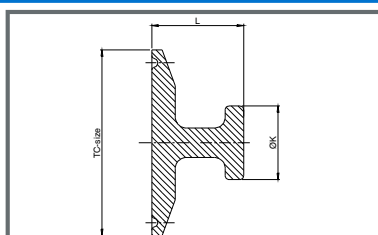
SMS 3008
ASTM 269/270, ASME BPE
ISO 1127
DIN 11 850

Description	Product code	TC-size	ØE	ØF	ØG	L
SMS 3008 Pipe Flange		[mm]	[mm]	[mm]	[mm]	[mm]
Kest-Lock Pipe Flange TC25, For pipe 12.0x1.0 , Length 20 mm	KLPF-TC25-SMS12-20	25	12.0	10.0	42	20
Kest-Lock Pipe Flange TC25 , For pipe 18.0x1.5 , Length 20 mm	KLPF-TC25-SMS18-20	25	18.0	15.0	42	20
Kest-Lock Pipe Flange TC50.5, For pipe 25.0x1.2 , Length 20 mm	KLPF-TC50-SMS25-20	50.5	25.0	22.6	68	20
Kest-Lock Pipe Flange TC50,5, For pipe 38.0x1.2 , Length 20 mm	KLPF-TC50-SMS38-20	50.5	38.0	35.6	68	20
Kest-Lock Pipe Flange TC64, For pipe 51.0x1.2 , Length 20 mm	KLPF-TC64-SMS51-20	64	51.0	48.6	82	20
Kest-Lock Pipe Flange TC77.5, For pipe 63.5x1.2 , Length 20 mm	KLPF-TC77-SMS63-20	77.5	63.5	61.1	95	20
Kest-Lock Pipe Flange TC91, For pipe 76.1x1.6 , Length 20 mm	KLPF-TC91-SMS76-20	91	76.1	72.9	109	20

Description	Product code	TC-size	ØE	ØF	ØG	L
ASTM 269/270 Pipe Flange		[mm]	[mm]	[mm]	[mm]	[mm]
Kest-Lock Pipe Flange TC25, For pipe 12.7x1.65 , Length 20 mm	KLPF-TC25-ASTM0.5-20	25	12.7	9.4	42	20
Kest-Lock Pipe Flange TC25 , For pipe 19.1x1.65 , Length 20 mm	KLPF-TC25-ASTM0.7-20	25	19.1	15.8	42	20
Kest-Lock Pipe Flange TC50.5, For pipe 25.4x1.65 , Length 20 mm	KLPF-TC50-ASTM1.0-20	50.5	25.3	22.1	68	20
Kest-Lock Pipe Flange TC50,5, For pipe 38.1x1.65 , Length 20 mm	KLTP-TC50-ASTM1.5-20	50.5	38.1	34.8	68	20
Kest-Lock Pipe Flange TC64, For pipe 50.8x1.65 , Length 20 mm	KLPF-TC64-ASTM2.0-20	64	50.8	47.5	82	20
Kest-Lock Pipe Flange TC77.5, For pipe 63.5x1.65 , Length 20 mm	KLPF-TC77-ASTM2.5-20	77.5	63.5	60.2	95	20
Kest-Lock Pipe Flange TC91, For pipe 76.2x1.65 , Length 20 mm	KLPF-TC91-ASTM3.0-20	91	76.2	72.9	109	20

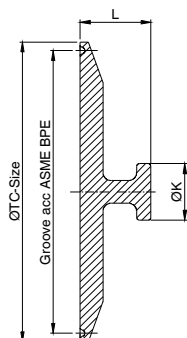
Description	Product code	TC-size	ØE	ØF	ØG	L
ISO 1127 Pipe Flange		[mm]	[mm]	[mm]	[mm]	[mm]
Kest-Lock Pipe Flange TC25 , For pipe DN8 (13.5x1.6) , Length 20 mm	KLPF-TC25-ISO8-20	25	13.5	10.3	42	20
Kest-Lock Pipe Flange TC34 , For pipe DN10 (17.2x1.6) , Length 20 mm	KLPF-TC34-ISO10-20	34	17.2	14.0	51	20
Kest-Lock Pipe Flange TC34, For pipe DN15 (21.3x1.6) , Length 20 mm	KLPF-TC34-ISO15-20	34	21.3	18.1	51	20
Kest-Lock Pipe Flange TC50.5, For pipe DN20 (26.9x1.6) , Length 20 mm	KLPF-TC50-ISO20-20	50.5	36.9	23.7	68	20
Kest-Lock Pipe Flange TC50.5, For pipe DN25 (33.7x2.0) , Length 20 mm	KLPF-TC50-ISO25-20	50.5	33.7	29.7	82	20
Kest-Lock Pipe Flange TC64, For pipe DN32 (42.3x2.0) , Length 20 mm	KLPF-TC64-ISO32-20	64	42.3	38.3	82	20
Kest-Lock Pipe Flange TC64, For pipe DN40 (48.3x2.0) , Length 20 mm	KLPF-TC64-ISO40-20	64	48.3	44.3	82	20
Kest-Lock Pipe Flange TC77.5, For pipe DN50 (60.3x2.0) , Length 20 mm	KLPF-TC77-ISO60-20	77.5	60.3	56.3	95	20
Kest-Lock Pipe Flange TC91, For pipe DN65 (76.1x2.3) , Length 20 mm	KLPF-TC91-ISO65-20	91	76.3	71.5	109	20
Kest-Lock Pipe Flange TC106, For pipe DN80 (88.9x2.3) , Length 20 mm	KLPF-TC106-ISO80-20	106	88.9	84.3	124	20
Description	Product code	TC-size	ØE	ØF	ØG	L
DIN 11 850 Pipe Flange (Rehie 2,1)		[mm]	[mm]	[mm]	[mm]	[mm]
Kest-Lock Pipe Flange TC34 , For pipe DN10 (13.0x1.5) , Length 20 mm	KLPF-TC34-DIN10-2-20	34	13.0	10.0	51	20
Kest-Lock Pipe Flange TC34 , For pipe DN15 (19.0x1.5) , Length 20 mm	KLPF-TC34-DIN15-2-20	34	19.0	15.0	51	20
Kest-Lock Pipe Flange TC34, For pipe DN20 (23.0x1.5) , Length 20 mm	KLPF-TC34-DIN20-2-20	34	23.0	20.0	51	20
Kest-Lock Pipe Flange TC50.5, For pipe DN25 (29.0x1.5) , Length 20 mm	KLPF-TC50-DIN25-2-20	50.5	29.0	26.0	68	20
Kest-Lock Pipe Flange TC50.5, For pipe DN32 (35.0x1.5) , Length 20 mm	KLPF-TC50-DIN32-2-20	50.5	35.0	32.0	68	20
Kest-Lock Pipe Flange TC50.5, For pipe DN40 (41.0x1.5) , Length 20 mm	KLPF-TC50-DIN40-2-20	50.5	41.9	38.0	68	20
Kest-Lock Pipe Flange TC64, For pipe DN50 (53.0x1.5) , Length 20 mm	KLPF-TC64-DIN50-2-20	64	53.0	50.0	82	20
Kest-Lock Pipe Flange TC91, For pipe DN65 (70.0x2.0) , Length 20 mm	KLPF-TC91-DIN65-1-20	91	70.0	66.0	109	20
Kest-Lock Pipe Flange TC106, For pipe DN80 (85.0x2.0) , Length 20 mm	KLPF-TC106-DIN80-1-20	106	85.0	81.0	124	20

Blind TC-flange with knob



ISO 2852

Description	Product code	TC-size	ØK	L
Blind TC-flange with knob ISO 2852		[mm]	[mm]	[mm]
Blind TC-flange with knob, TC25	KLBF-TC25	25	20	25
Blind TC-flange with knob, TC34	KLBF-TC34	34	20	25
Blind TC-flange with knob, TC50.5	KLBF-TC50	50.5	20	25
Blind TC-flange with knob, TC64	KLBF-TC64	64	20	25
Blind TC-flange with knob, TC77.5	KLBF-TC77.5	77.5	20	25
Blind TC-flange with knob, TC91	KLBF-TC91	91	20	25
Blind TC-flange with knob, TC106	KLBF-TC106	106	20	25



ASME BPE

Description	Product code	TC-size	ØK	L
Blind TC-flange with knob ASME BPE (measurements acc acc DT-5-2)		[mm]	[mm]	[mm]
Blind TC-flange with knob, TC25 -1/4" to 3/4" , Designed acc ASME BPE	KLBF-TC25-BPE	25	20	25
Blind TC-flange with knob, TC50.5 -1" & 1 1/2", Designed acc ASME BPE,	KLBF-TC50-BPE	50.5	20	25
Blind TC-flange with knob, TC64, -2", Designed acc ASME BPE	KLBF-TC64-BPE	64	20	25
Blind TC-flange with knob, TC77.5 , - 2 1/2" , Designed acc ASME BPE	KLBF-TC77.5-BPE	77.5	20	25
Blind TC-flange with knob, TC91,-3", Designed acc ASME BPE	KLBF-TC91-BPE	91	20	25
Blind TC-flange with knob, TC119, -4", Designed acc ASME BPE	KLBF-TC119-BPE	119	20	25