



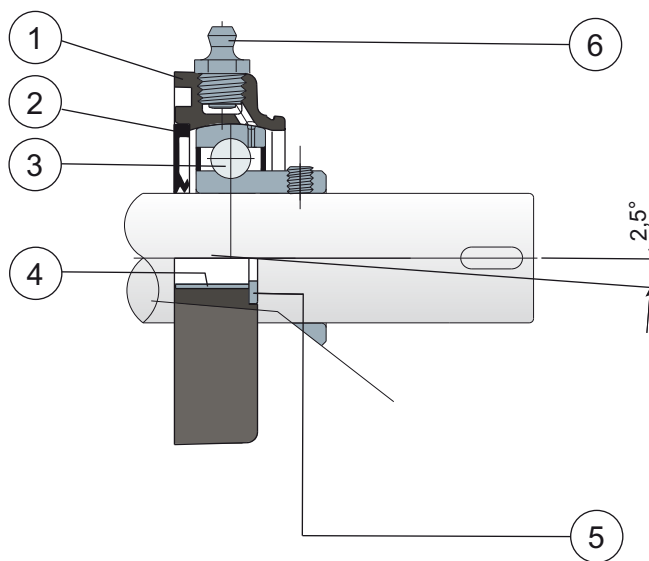
# Oval flanged bearing supports

Serie **MUCFL/CX**

**NEW**

*New product line with support body in PA white colour.*

Without protection cover



- 1) Support body made out of black or white polyamide reinforced with glass fibers.
- 2) Back gasket made out of NBR rubber for turning shaft seal.
- 3) Chrome steel or stainless steel bearing AISI 440C.
- 4) Spacer for fixing reinforcement made out of stainless steel AISI 304.
- 5) UNI 6592 support washer made out of stainless steel AISI 304.
- 6) Greaser for relubrication made out of nickel-plated brass.

NOTE: The only difference from MUCFL/C series is lack of protection cover, which can be ordered separately as an accessory.

Maximum shaft alignment error 2,5°

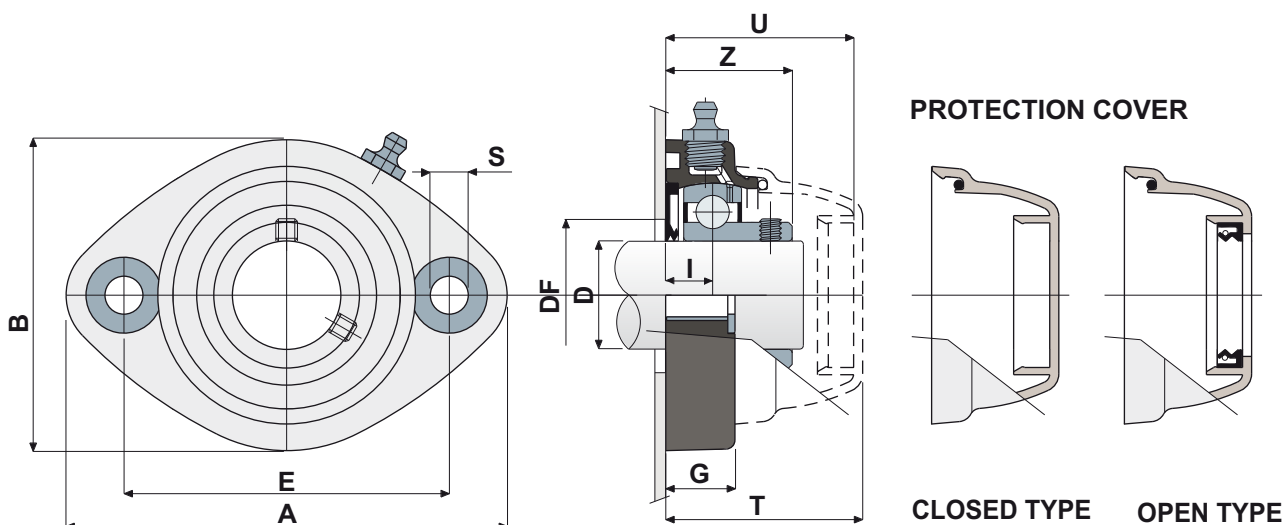
For further information please contact our technical office or sales department.



# Oval flanged bearing supports

## Technical data

Serie **MUCFL/CX**



CHROME STEEL BEARING																			
D	SERIE	Support CODES		DIMENSIONS (mm)										Bearing load (N)		Bearing support load	COVER CODES		
		Black colour	White colour	E	A	B	S	G	I	Z	U	T	DF		C	C0	(N)	Closed type	Open type
													Max	Min					
20	MUCFL 204 CX	83035	84696	90	122	86	10,5	19	16	34	44	46,5	45	40	12800	6600	8500	80254	80255
25	MUCFL 205 CX	83036	84697	90	122	86	10,5	19	15,5	35	44	46,5	50	45	14000	7800	10000	80075	80076
30	MUCFL 206 CX	80540	84698	90	122	86	10,5	19	13	35	52	54,5	60	50	19500	11300	13000	82765	82764
35	MUCFL 207 CX	83992	84699	117	147	112	10,5	27	20	45,3	57	59,6	70	55	25500	15300	14000	80077	80078
40	MUCFL 208 CX	83993	84700	117	147	112	10,5	27	20	48,5	65,5	68	78	65	30700	19000	15000	80256	80257

		STAINLESS STEEL BEARING AISI 440C																			
D	SERIE	Support CODES		DIMENSIONS (mm)										DF		Bearing load (N)		Bearing support load (N)		COVER CODES	
		Black colour	White colour	E	A	B	S	G	I	Z	U	T	Max	Min		C	C0	(N)		Closed type	Open type
20	MUCFL 204 CX	83045	84701	90	122	86	10,5	19	16	34	44	46,5	45	40		8300	6550	8500		80254	80255
25	MUCFL 205 CX	83046	84702	90	122	86	10,5	19	15,5	35	44	46,5	50	45		9150	7800	10000		80075	80076
30	MUCFL 206 CX	83047	84703	90	122	86	10,5	19	13	35	52	54,5	60	50		12500	11200	13000		82765	82764
35	MUCFL 207 CX	84019	84704	117	147	112	10,5	27	20	45,3	57	59,6	70	55		16600	15300	14000		80077	80078
40	MUCFL 208 CX	83994	84705	117	147	112	10,5	27	20	48,5	65,5	68	78	65		20000	19000	15000		80256	80257

### VERSIONS WITH MEASURES IN INCHES

CHROME STEEL BEARING																					
D		SERIE	Support CODES		DIMENSIONS (mm)											Bearing load (N)		Bearing support load	COVER CODES		
(inches)	(mm)		Black colour	White colour	E	A	B	S	G	I	Z	U	T	DF		C	C0	(N)	Closed type	Open type	
														Max	Min						
1"	25,4	MUCFL 205 CX	84517	84983	90	122	86	10,5	19	15,5	35	44	46,5	50	45	14000	7800	10000	80075	80076	
1 1/4"	31.75	MUCFL 206 CX	84518	84984	90	122	86	10.5	19	13	35	52	54.5	60	50	19500	11300	13000	82765	82764	

**MATERIALS:** Support made out of black or white colour PA + glass fiber; chrome steel or stainless steel bearing; greaser made out of nickel plated brass; reinforcement bushings and washers made out of stainless steel AISI 304; gaskets made out of NBR rubber; cover made out of polypropylene, grey colour RAL 7042.

**FEATURES:** The difference from MUCFL/C series is lack of protection cover which can be ordered separately as an accessory. Assembly with not shouldered shafts. Maximum shaft alignment error 2.5°.

**BOX QUANTITY:** 8 pieces.

**ON REQUEST:** Versions with body in polypropylene + glass fiber and antibacterial additive; protection cover in different colors and with customized brand; box quantity according to your request; Viton gaskets, "Long life" bearings.