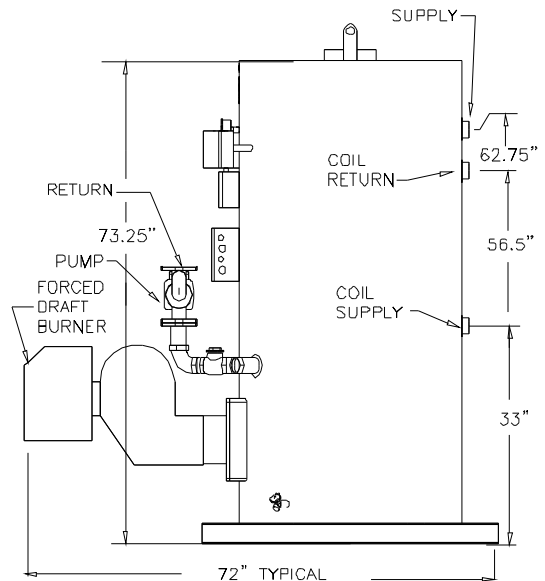
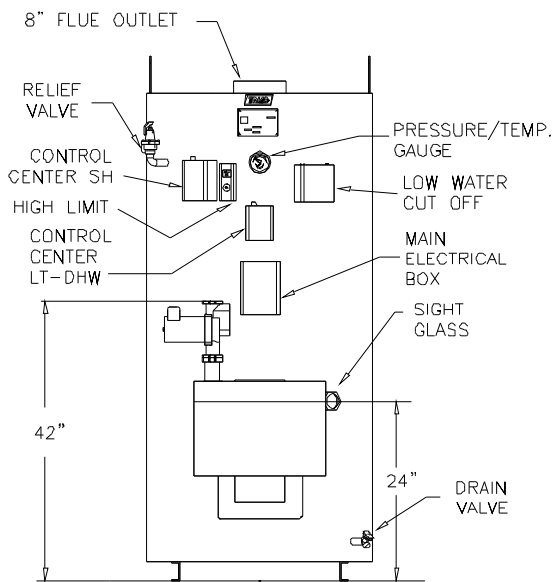
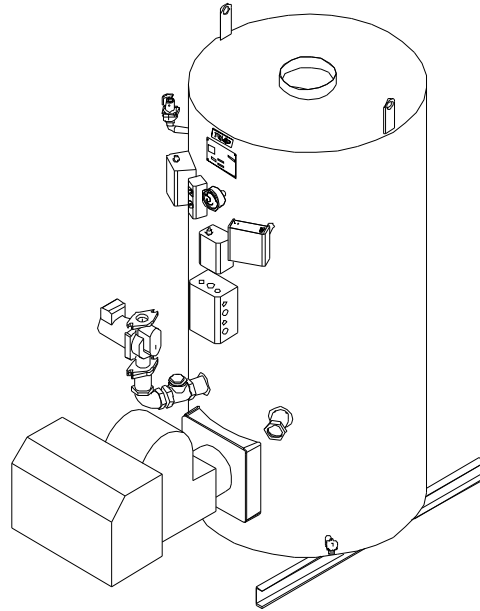
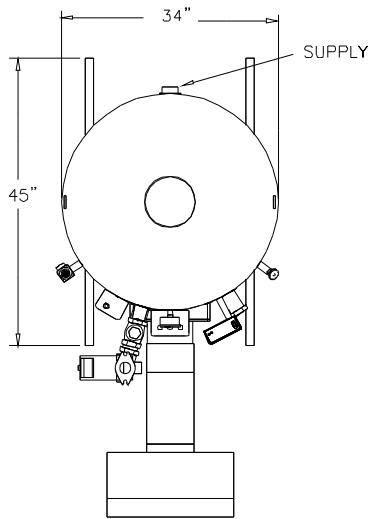




West Chicago, IL 60185
 Phone: 630-562-2700
www.triadboiler.com

TRIAD BOILER SYSTEMS, INC.
SERIES 1600 SPACE HEAT and LOW TEMPERATURE BOILER



Note: Dimensions subject to change without notice.



TRIAD BOILER SYSTEMS, INC.
SERIES 1600 BOILER (Model 1600 SH-C-LT)

The Series 1600 is a steel vertical firetube packaged boiler with a water-backed combustion chamber equipped with high-efficiency turbulators. Boilers come fully wired, and fit through a 36" doorway.

STANDARD EQUIPMENT:

- Low/High/Off Power Burner (UL Listed)
- Circulating Pump – Vessel Water
- Circulating Pump – Coil Water
- Honeywell Control Centers for SH and LT
- Low Water Cut-Off
- Combination Pressure/Temperature Gauge
- Operating Light
- Relief Valve
- Second Safety High Limit with Manual Reset
- Vessel Pressure Rating of 125 PSI
- UL Listed Boiler/Burner Package.

OPTIONAL EQUIPMENT:

- Gas Fired (NG or Propane), Oil Fired, or Dual Fuel Burners
- UL, IRI, FM and CSD-1 Compliance
- Low/High/Low and Modulating Gas Trains
- Sealed Combustion Air Intake
- Barometric Dampers
- LWCO with Manual or Auto Reset, Test Light, and/or Test Button

SPECIFICATIONS:

<i>Input BTU/Hr</i>	<i>Output BTU/Hr</i>	<i>Efficiency</i>	<i>GPM @ °F Rise Vessel Side</i>	<i>GPM @ °F Rise Coil Side</i>
1,400,000	1,162,800	83.0%	116.7 @ 20°F	35.0 @ 50°F
1,500,000	1,245,000	83.0%	100.0 @ 25°F	35.0 @ 50°F
1,600,000	1,328,000	83.0%	106.7 @ 25°F	35.0 @ 50°F
1,700,000	1,411,000	83.0%	113.3 @ 25°F	35.0 @ 50°F

Note: Typical for Natural Gas. - Oil or LP burner data may vary.

APPLICATIONS:

Space Heating – typical supply 180°F, return as low as 130°F,
 Lower temperature Coil - for jobs such as in-floor radiant heating, snow melt, and heat pump applications.

CLEARANCES & CONNECTIONS:

Clearance recommended between boilers - 6"; From front of burner for service – 10".
 Vessel supply & return diameters – 2.0"; coil supply & return diameters – 1.5"

CONTROL:

The Series 1600 can operate on its own controls, but a TRIAD microprocessor control panel is recommended for sequencing more than two boilers to minimize run-time and fuel usage.

Flue: Category I when applied appropriately.

POWER: 120V, 60Hz, Single Phase, fused for 30 amps. Min / Max gas pressure, typically 5.9" / 14" WC

WEIGHT/VOLUME:

Shipping Weight – 1700 lbs.
 Operating Weight – 3037 lbs.
 Water Volume – 109 gallons

ALL BURNER EQUIPMENT UL APPROVED

TRIAD BOILER REPRESENTATIVE:

TRIAD Boiler Systems, Inc.

West Chicago, IL 60185
 Phone: 630-562-2700
 Fax: 630-562-2800
 Web: www.com.com