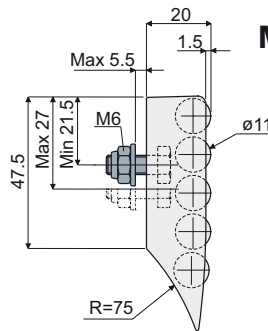
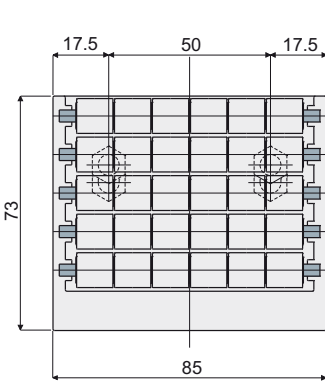
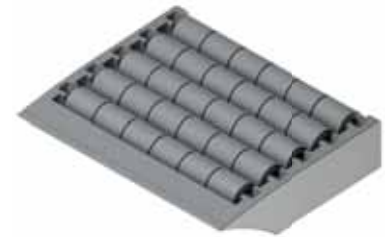


Modular transfer plates



Modular transfer plates with rollers
(width 85 mm 5 rows of rollers)

Part. **260**



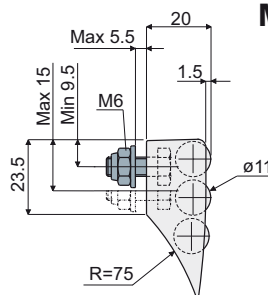
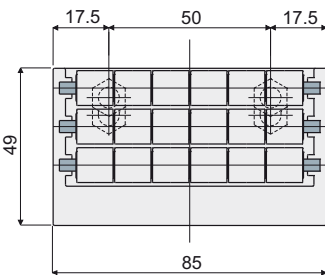
Code
260 / 82002

MATERIALS: Modular transfer plate with external module and rollers made of acetal grey colour; pins and fixing bolts and nuts made of stainless steel AISI 304.
FEATURES: To be assembled at the end of your conveyor to help the products transfer. Easy to assemble, low friction coefficient, minimum noise level, extremely cleanable.

BOX QUANTITY: 8 pieces.

ON REQUEST:

- External module and rollers: Can be produced in other colours.
- Box Quantity: According to your request.



Modular transfer plates with rollers
(width 85 mm 3 rows of rollers)

Part. **261**



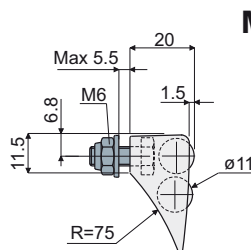
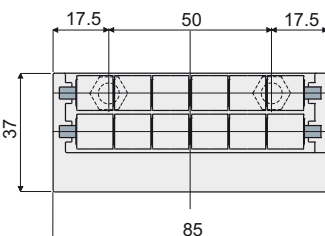
Code
261 / 82001

MATERIALS: Modular transfer plate with external module and rollers made of acetal grey colour; pins and fixing bolts and nuts made of stainless steel AISI 304.
FEATURES: To be assembled at the end of your conveyor to help the products transfer. Easy to assemble, low friction coefficient, minimum noise level, extremely cleanable.

BOX QUANTITY: 8 pieces.

ON REQUEST:

- External module and rollers: Can be produced in other colours.
- Box Quantity: According to your request.



Modular transfer plates with rollers
(width 85 mm 2 rows of rollers)

Part. **262**



Code
262 / 82000

MATERIALS: Modular transfer plate with external module and rollers made of acetal grey colour; pins and fixing bolts and nuts made of stainless steel AISI 304.
FEATURES: To be assembled at the end of your conveyor to help the products transfer. Easy to assemble, low friction coefficient, minimum noise level, extremely cleanable.

BOX QUANTITY: 8 pieces.

ON REQUEST:

- External module and rollers: Can be produced in other colours.
- Box Quantity: According to your request.