

Keg Cooler

Container Box

Beer circulation cooler

- Cooling of 2 up to 10 kegs 50 l (Ø 425 mm) or up to max. 22 kegs 30 l (Ø 385 mm)
- Different cooling unit models



The elements of insulation, which are 56 mm thick, are foamed under high pressure. The sandwich-construction guarantees high stability, energy saving and fast cooling, even if there are high surrounding temperatures. The inside panel and the outer panel are connected without a thermal bridge.

Because of quick connections, high stability and a compact construction is achieved. The assembling of the eight elements, including the cooling unit lasts only 5 minutes.

Specification – Keg Cooler

Cooling corpus

- Insulation: foamed in one piece, 56 mm thick, thermal bridge free manufacturing of the whole corpus
- Construction CN: bottom-, side-, back-, and ceiling panels in stainless steel
- Construction VZ: bottom panel in sheet steel, special coated, grey (N2PVA burlled); side-, back-, and ceiling panel in galvanized sheet steel
- Quick and easy mounting with inside connectors
- Adjustable feet 8 up to 30 mm
- Inside height: 980 mm

Usable capacity

- 2 up to 10 kegs \varnothing 425 mm (50 l) or 2 up to 11 kegs \varnothing 385 mm (30 l) or up to max. 22 kegs \varnothing 385 mm (30 l) when stacking

Door

- Lockable as standard
- Easy replaceable door gasket

Cooling units

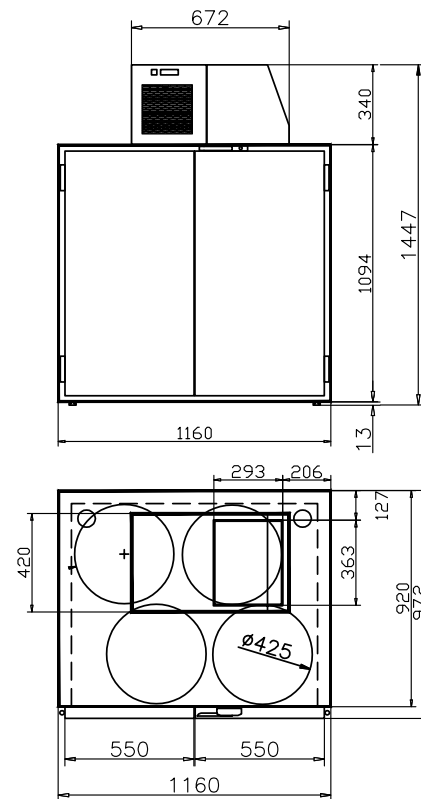
- Cooling units on top, powerful, fully hermetically, thermostatic controlled cooling units with the refrigerant R134a
- Cooling capacity 500 or 575 W ($t_0 = -10\text{ }^{\circ}\text{C}$)
- Digital controller with automatic defrost
- Temperature display
- Condensate evaporation 220/230 V / 50 Hz

At extra charge:

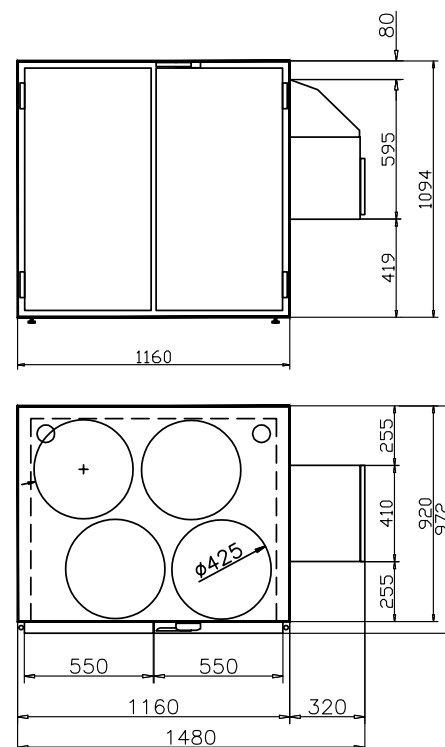
- Cooling units at the side or with beer circulation cooling
- Forced cooling aggregates
- Keg coolers without the cut-out in the ceiling for the connection to external cooling unit

Please take our stated recommendations into account.

Drawing 4FASS with STFAUF



Drawing 4FASS with STFSEIT



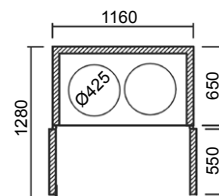
2 kegs

Usable capacity: 2 kegs Ø 425 mm (50 l) or 385 mm (30 l) or 4 kegs Ø 385 mm (30 l) when stacking

VZ = Galvanized sheet steel

CN = Stainless steel

2FASSVZ 1.050,00 €	2FASSCN 1.260,00 €
--------------------	--------------------



+ Cooling unit	sheet steel	stainless steel
Cooling unit on top, 500 W	STFAUFVZ 715,00 €	STFAUFCN 745,00 €
Cooling unit at the side, 500 W		STFSEITCN 840,00 €
Cooling unit on top with beer circulation cooling, 500 W cooling capacity		STFB BK 1.340,00 €

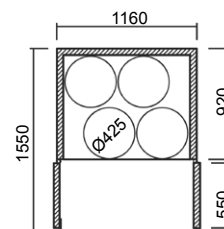
4 kegs

Usable capacity: 4 kegs Ø 425 mm (50 l) or 5 kegs Ø 385 mm (30 l) or 10 kegs Ø 385 mm (30 l) when stacking

VZ = Galvanized sheet steel

CN = Stainless steel

4FASSVZ 1.140,00 €	4FASSCN 1.320,00 €
--------------------	--------------------



+ Cooling unit	sheet steel	stainless steel
Cooling unit on top, 500 W	STFAUFVZ 715,00 €	STFAUFCN 745,00 €
Cooling unit at the side, 500 W		STFSEITCN 840,00 €
Cooling unit on top with beer circulation cooling, 500 W cooling capacity		STFB BK 1.340,00 €

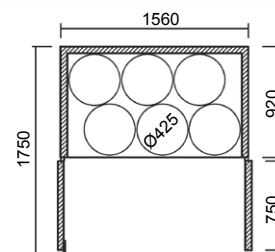
6 kegs

Usable capacity: 6 kegs Ø 425 mm (50 l) or 7 kegs Ø 385 mm (30 l) or 14 kegs Ø 385 mm (30 l) when stacking

VZ = Galvanized sheet steel

CN = Stainless steel

6FASSVZ 1.200,00 €	6FASSCN 1.520,00 €
--------------------	--------------------



+ Cooling unit	sheet steel	stainless steel
Cooling unit on top, 500 W	STFAUFVZ 715,00 €	STFAUFCN 745,00 €
Cooling unit at the side, 500 W		STFSEITCN 840,00 €
Cooling unit on top with beer circulation cooling, 500 W cooling capacity		STFB BK 1.340,00 €

8 kegs

Usable capacity: 8 kegs Ø 425 mm (50 l) or 9 kegs Ø 385 mm (30 l) or 18 kegs Ø 385 mm (30 l) when stacking

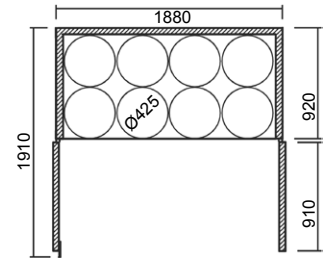
VZ = Galvanized sheet steel

CN = Stainless steel

8FASSVZ 1.320,00 €	8FASSCN 1.640,00 €
--------------------	--------------------



+ Cooling unit	sheet steel	stainless steel
Cooling unit on top, 500 W	STFAUFVZ 715,00 €	STFAUCFN 745,00 €
Boosted cooling unit on top (recommended) 575 W	STFAUFVZV 840,00 €	STFAUCNV 855,00 €
Cooling unit at the side, 500 W cooling capacity		STFSEITCN 840,00 €
Boosted cooling unit at the side (recommended), 575 W		STFSEITCNV 1.010,00 €
Cooling unit on top with beer circulation cooling, 500 W cooling capacity		STFBBK 1.340,00 €



10 kegs

Usable capacity: 10 kegs Ø 425 mm (50 l) or 11 kegs Ø 385 mm (30 l) or 22 kegs Ø 385 mm (30 l) when stacking

Boosted cooling unit is necessary!

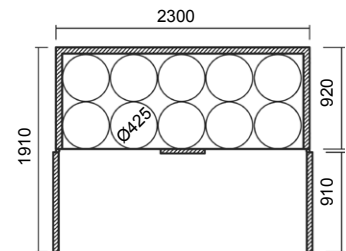
VZ = Galvanized sheet steel

CN = Stainless steel

10FASSVZ 1.520,00 €	10FASSCN 1.850,00 €
---------------------	---------------------



+ Boosted cooling unit	sheet steel	stainless steel
Boosted cooling unit on top 575 W	STFAUFVZV 840,00 €	STFAUCNV 855,00 €
Boosted cooling unit at the side, 575 W		STFSEITCNV 1.010,00 €
Cooling unit on top with beer circulation cooling, 500 W		STFBBK 1.340,00 €



Übersicht aller lieferbaren Cooling units

Cooling unit	stainless steel		sheet steel	
	Cooling unit on top for 2 up to 8 kegs, 500 W cooling capacity	STFAUCFN	745,00 €	STFAUFVZ
Boosted cooling unit on top for 8 - 10 kegs, 575 W cooling capacity	STFAUCNV	855,00 €	STFAUFVZV	840,00 €
Extra Boosted cooling unit on top for cooling of foods, 675 W cooling capacity	STFAUFV650CN	1.080,00 €	STFAUFV650VZ	1.050,00 €
Cooling unit at side for 2 - 8 kegs, 500 W cooling capacity	STFSEITCN	840,00 €	---	---
Boosted cooling unit at side for 8 - 10 kegs, 575 W cooling capacity	STFSEITCNV	1.010,00 €	---	---
Cooling unit on top with beer circulation cooling, 500 W cooling capacity	STFBBK	1.340,00 €	---	---
Cooling unit with condensate evaporation, for connection to external cooling unit, 500 W cooling capacity	STFSAT	845,00 €	---	---
Oil heating	KCW	400,00 €	---	---



Cooling unit on top STFAUF



Cooling unit at the side STFSEIT



Beer circulation cooling STFBBK

Specifications

	STFAUF	STFAUF V	STFAUF 650V	STFSEIT	STFSEIT V	STFBBK
Cooling capacity ($t_0 = -10\text{ °C}$)	500 W	575 W	675 W	500 W	575 W	500 W
Electrical capacity	350 W	370 W	450 W	350 W	370 W	400 W
Dimensions (W x D x H)	670 x 420 x 360 mm			320 x 465 x 615 mm		920 x 420 x 350 mm
Opening (B x H)	297 x 367 mm			297 x 367 mm		297 x 367 mm
Rated voltage	230 V / 50 Hz			230 V / 50 Hz		230 V / 50 Hz
Electrical protection	16 A			16 A		16 A
Current consumption	2,2 A	2,3 A	2,8 A	2,2 A	2,3 A	2,5 A
Max. working pressure	18 bar			18 bar		18 bar
Refrigerant	R134a			R134a		R134a
Volume of refrigerant	0,18 kg	0,185 kg	0,35 kg	0,19 kg	0,195 kg	0,26 kg
Temperature range	+10 up to +32 °C			+10 up to +32 °C		+10 up to +32 °C
Operating volume	51 dBA			51 dBA		
Weight	27 kg	28,5 kg	30 kg	27 kg	28,5 kg	29 kg
Protection class	IP34			IP34		IP34
Climate class	SN			SN		SN
Pump performance (H x W)	---			---		6 x 15 m
Tank	---			---		13 l

Container Box (Depth 540 mm)

With integral cooling system

Cooling corpus

- Galvanized steel sheet
- Bottom out of stainless steel, specially coated, grey
- Models in stainless steel also possible

Door

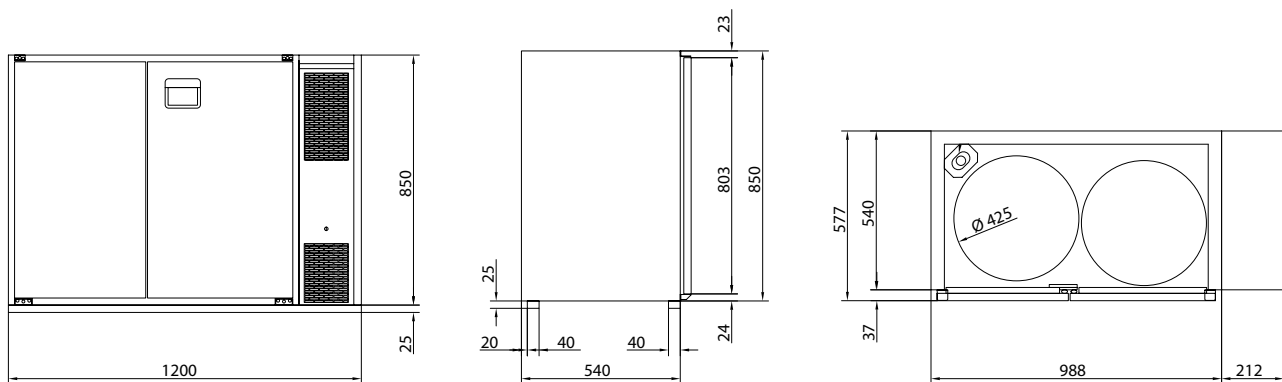
- Anthracite, hinges in stainless steel

Cooling unit

- Cooling capacity 300 W ($t_0 = -10\text{ °C}$), 1 evaporator
- Integral cooling unit (R134a), capillary tube injection
- Digital controller with automatic defrost

Technical Specifications Container Box

Cooling capacity ($t_0 = -10\text{ °C}$)	300 W
Electrical capacity	240 W
Electrical connection	220/230 V / 50 Hz
Electrical input capacity	1,5 A
Temperature range	+4 up to +20 °C
Fuse	16 A
Refrigerant	R134a / 0,17 kg
Max. ambient temperature	+32 °C
Perfection class	IP22



MMCB1200MS	Evaporator, cooling capacity 300 W, with LED illumination Outer dimensions (W x D x H): 1200 x 577 x 850 mm (+ 25 mm socket, black anodized) Inner dimensions (W x D x H): 797 x 487 x 759 mm Usable capacity: 2 kegs $\varnothing 385$ mm (30 l) or 2 kegs $\varnothing 425$ mm (50 l) or 5 Container $\varnothing 240$ mm (20 l)	1.460,00 €
------------	--	------------

15

