

# SELF-ADJUSTING WEIGH ASSEMBLIES

## WITH LC501/LCM501 SERIES LOAD CELL INCLUDED

### STANDARD AND METRIC MODELS

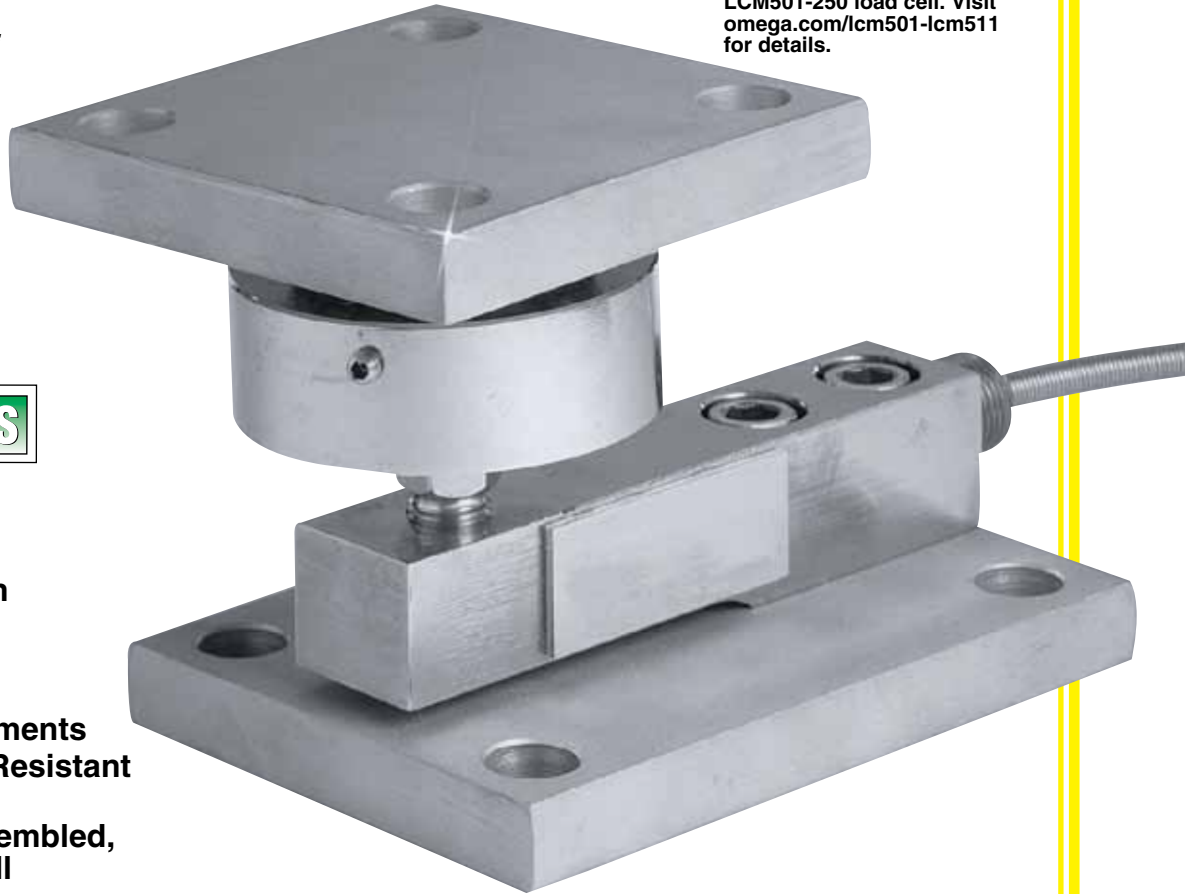
**TWA5/TWAM5 (Nickel-Plated Carbon Steel)**  
**TWA6/TWAM6 (Stainless Steel)**  
**0-100 lb to 0-20,000 lb**  
**0-25 kgf to 0-10,000 kgf**

**METRIC**  
 TWAM5-250 shown smaller than actual size, includes LCM501-250 load cell. Visit [omega.com/lcm501-lcm511](http://omega.com/lcm501-lcm511) for details.

**TWA5/TWAM5**  
**TWA6/TWAM6**



Standard



- ✓ Heavy-Duty Design
- ✓ For Tank and Bin Weighing
- ✓ Self-Adjusting for Accurate Measurements
- ✓ Highly Corrosion-Resistant Materials
- ✓ Shipped Fully Assembled, Including Load Cell
- ✓ 5-Point Calibration Provided
- ✓ 150% Compression Overload
- ✓ Ideal for Multicell Installations

### SPECIFICATIONS

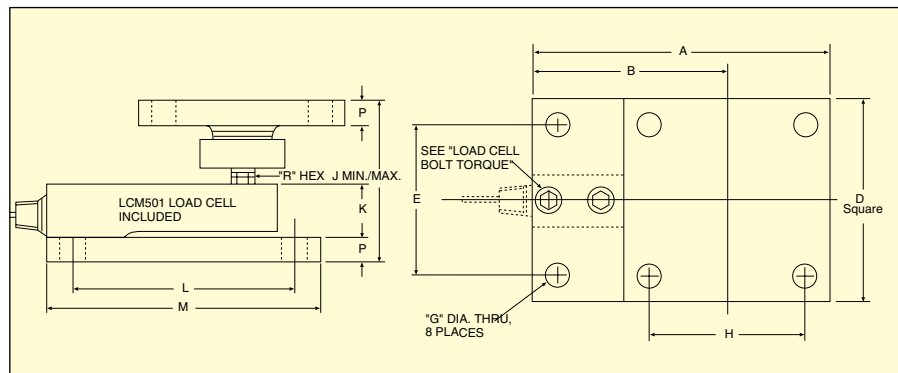
**Non-Parallel Mounting:**  
 Self-adjusting for surfaces up to 2°

**Thermal Expansion:**  
 Self-adjusting for up to ±1.6 mm

**Height:** Adjustable per dimension "J"

Weight: (Including Load Cell)	Standard Range	kgf (lb)
100 to 750		4.5 (10)
1000 to 5000		10.5 (23)
10,000		11.5 (25)
20,000		25 (55)
Metric Range	kgf (lb)	
25 to 250		4.5 (10)
500 to 2500		10.5 (23)
5000		11.5 (25)
10,000		25 (55)

**5-Point Calibration (in Compression):**  
 0%, 50%, 100%, 50%, 0%



### Dimensions: mm (inch)

CAPACITY kgf (lb)	A	B	D	E	G	H	J	K	L	M	P	R	TORQUE N-m (ft-lb)
≤375 (≤750)	146 (5.75)	102 (4.00)	88.9 (3.50)	63.5 (2.50)	13.5 (0.53)	63.5 (2.50)	95.3/102 (3.75/4.00)	25.4 (1.00)	101.6 (4.00)	127 (5.00)	12.7 (0.50)	14.2 (0.56)	30 (22)
500 to 2.5K (1 K to 5K)	222 (8.75)	146 (5.75)	152 (6.00)	114 (4.50)	17.3 (0.68)	114 (4.50)	121/127 (4.75/5.00)	38.1 (1.50)	165.1 (6.50)	203 (8.00)	19 (0.75)	14.2 (0.56)	76 (56)
5K (10K)	248 (9.75)	171 (6.75)	152 (6.00)	114 (4.50)	17.3 (0.68)	114 (4.50)	127/133 (5.00/5.25)	38.1 (1.50)	165.1 (6.50)	203 (8.00)	19 (0.75)	22.4 (88)	245 (180)
10K (20K)	311 (12.3)	216 (8.50)	191 (7.50)	140 (5.50)	20.6 (0.81)	140 (5.50)	184/191 (7.25/7.50)	63.5 (2.50)	203 (8.00)	254 (10.00)	25.4 (1.00)	28.4 (1.12)	245 (180)

# SELF-ADJUSTING WEIGH ASSEMBLIES

To Order Visit [omega.com/twa5](http://omega.com/twa5) for Pricing and Details

CAPACITY		WEIGHING ASSEMBLIES WITH LOAD CELL		REPLACEMENT LOAD CELL MODEL NO.
		CARBON STEEL MODEL NO.	STAINLESS STEEL MODEL NO.	
kgf	lb			
<b>STANDARD MODELS</b>				
45	100	TWA5-100	TWA6-100	LC501-100
91	200	TWA5-200	TWA6-200	LC501-200
227	500	TWA5-500	TWA6-500	LC501-500
341	750	TWA5-750	TWA6-750	LC501-750
455	1000	TWA5-1K	TWA6-1K	LC501-1K
909	2000	TWA5-2K	TWA6-2K	LC501-2K
1361	3000	TWA5-3K	TWA6-3K	LC501-3K
2269	5000	TWA5-5K	TWA6-5K	LC501-5K
4537	10,000	TWA5-10K	TWA6-10K	LC501-10K
9074	20,000	TWA5-20K	TWA6-20K	LC501-20K
<b>METRIC MODELS</b>				
25	55	TWAM5-25	TWAM6-25	LCM501-25
50	110	TWAM5-50	TWAM6-50	LCM501-50
100	220	TWAM5-100	TWAM6-100	LCM501-100
250	551	TWAM5-250	TWAM6-250	LCM501-250
500	1102	TWAM5-500	TWAM6-500	LCM501-500
1000	2205	TWAM5-1K	TWAM6-1K	LCM501-1K
2500	5512	TWAM5-2.5K	TWAM6-2.5K	LCM501-2.5K
5000	11,023	TWAM5-5K	TWAM6-5K	LCM501-5K
10,000	22,046	TWAM5-10K	TWAM6-10K	LCM501-10K

**Note:** Weighing assembly is shipped fully assembled including the load cell. Load cell comes with 5-point NIST-traceable calibration and 59 kΩ shunt data. LC501 series load cell will be installed into the TWA module.

**Ordering Examples:** TWA6-5K, 5000 lb weighing assembly in stainless steel with, LC501-5K load cell included.

TWA5-750, 750 lb weighing assembly in carbon steel with LC501-750 load cell included.

TWAM6-2.5K, 2500 kgf capacity stainless steel weighing assembly with LCM501-2.5K, load cell (included).

TWAM5-250, 250 kgf capacity carbon steel weighing assembly with LCM501-250, load cell (included).

## COMPATIBLE METERS/CONTROLLERS FOR PX309 SERIES PRESSURE TRANSDUCERS

The iSeries is available in 1/32, 1/16, and 1/8 DIN programmable process controllers with serial and embedded Internet/Ethernet communications (Order EI Option CNI16D). The iSeries features programmable color displays, free software and ActiveX Controls, selectable full autotune PID control, and NEMA 4 (IP65) rated front bezel. Ordering Examples: DPiS8, strain/process (monitor only), 1/8 DIN; CNI8, strain/process controller with 2 control outputs. Visit [omega.com/meters](http://omega.com/meters).

