

Ultra Mag Models: 8300, 8301, 8313, 8314, 8300BL, 8301BL, 8313BL, 8314BL, 8340, 8341, 8350, 8351, 8340BL, 8341BL, 8350BL & 8351BL



Batch Control System - Air

See Figure 5

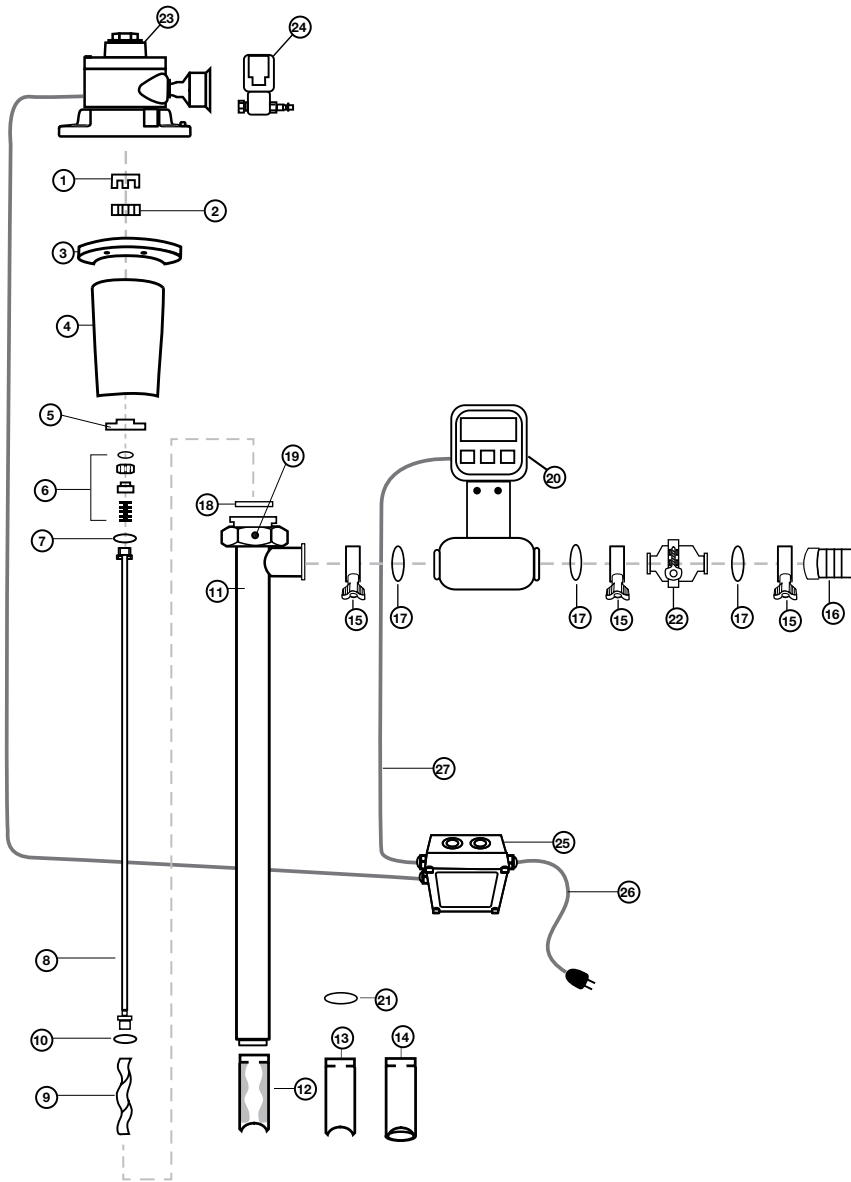


Figure 5 – Ultra Mag Batch Control System – Air

| Ref # | Description | Part Number |
|-------|------------------------------------|-------------|
| 1 | Motor Coupling, 14 mm | 744 |
| 2 | Coupling Insert | 745 |
| 3 | Motor Mount Flange, Aluminum | 760 |
| 4 | Bearing Housing Assembly, Aluminum | 759 |
| 5 | Mechanical Seal Bushing, SS316 | 702 |
| 6 | Mechanical Seal, SIC | 703 |
| 7 | Gasket, PTFE | 735 |
| 8 | Drive Shaft, SS316 | |
| | SP-1851-39 | 705 |
| | SP-752-39, | 706 |
| 9 | Rotor, SS316 | |
| | Size 752 | 709 |
| | Size 1851 | 710 |
| 10 | Gasket, PTFE | 731 |
| 11 | Outer Tube Assembly, SS316 | |
| | SP-1851-39 | 801 |
| | SP-752-39, | 802 |
| 12 | Stator | |
| | Size 752 | 823 |
| | Size 1851 | 824 |
| 13 | Stator Tube, SS316 | |
| | Size 752 | 875 |
| | Size 1851 | 876 |
| 14 | Stator for Bagliners, SS316 | |
| | Size 752 | 875BL |
| | Size 1851 | 876BL |
| 15 | Tri-Clamp®, SS316 | 833 |
| 16 | Hose Barb, SS316, 1.50" (38 mm) | 835 |
| 17 | O-Ring, Buna | 836 |
| 18 | Gasket, PTFE | 738 |
| 19 | Set Screw, SS316 | 757 |
| 20 | Batch Control Meter | 800us51g47 |
| 21 | Ring, SS316 | 0016 |
| 22 | Check Valve, SS316 | 384510V |
| 23 | Air Motor, 2 HP (1,5 KW) | SP-A4FP |
| 24 | Solenoid Valve Kit, SS316 | |
| | 110-120V | 0031SS |
| | 220-240V | 0031SS-2 |
| 25 | Relay Box | US51G09 |
| 26 | Relay Box Power Cord | |
| | 110-120V | 8362 |
| | 220-240V | 8710 |
| 27 | Power Cord, Meter to Relay Box | 113443 |