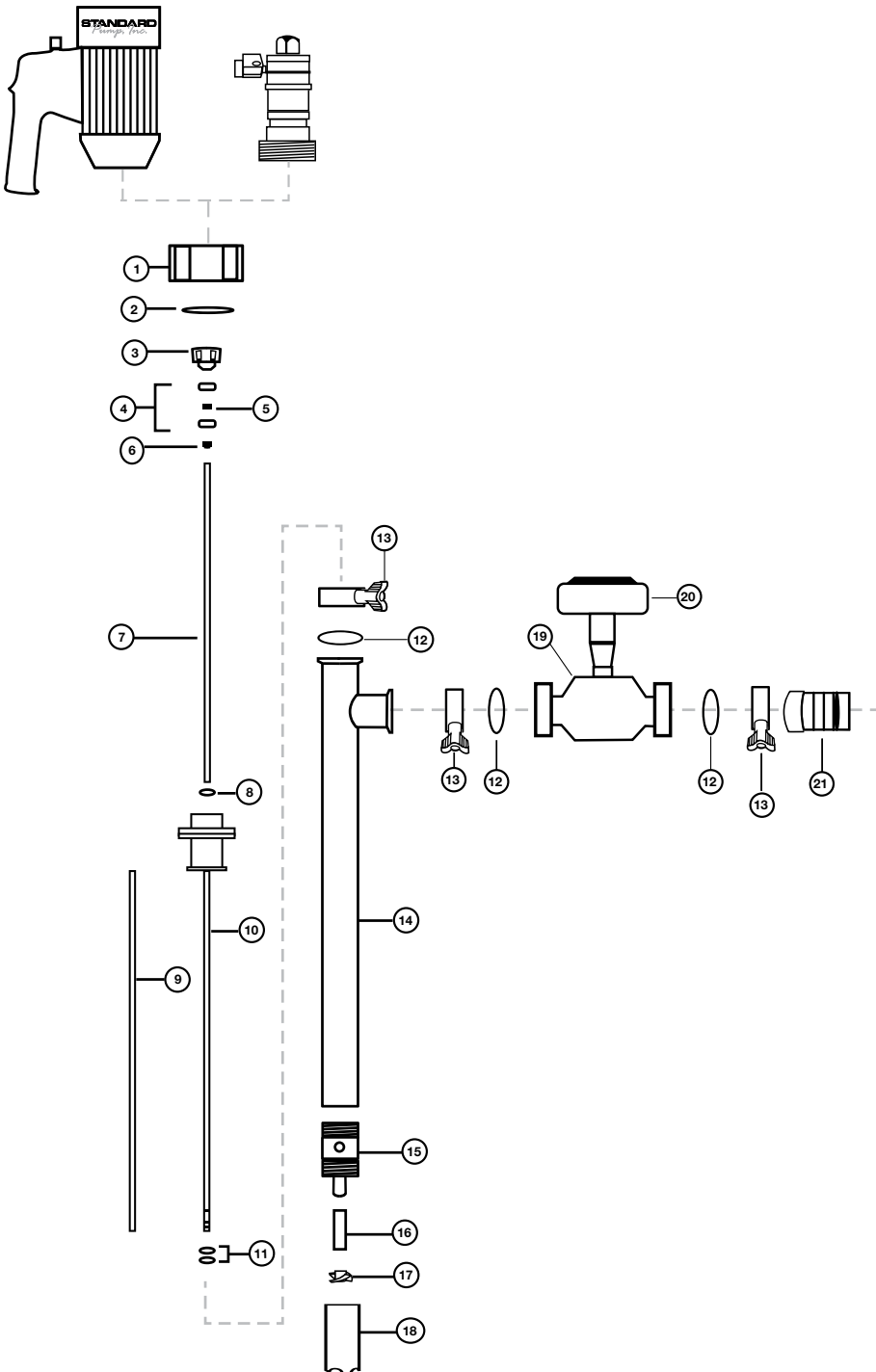


Flow Meter System Models: 8870, 8871, 8873, 8874, 8872 & 8875

Flow Meter System Spare Parts Lists



Flow Meter System

See Figure 10

| Ref # | Description | Part Number |
|-------|---|-------------|
| 1 | Connection Nut, SS316 | 8842 |
| 2 | Snap Ring, SS316 | 8208 |
| 3 | Pump Coupling, Nylon | 1004 |
| 4 | Bearing, SS410C, Food Grade Grease (2 Required) | 8838-2 |
| 5 | Bearing Spacer, SS316 | 8838-4 |
| 6 | Secondary Seal, PTFE | 8803 |
| 7 | Drive Shaft, SS316 | |
| | 39" (1000 mm) | 8806 |
| | 47" (1200 mm) | 8807 |
| 8 | O-Ring, Buna | 8830 |
| 9 | Guide Sleeve, PTFE | |
| | 39" (1000 mm) /47" (1200 mm) | 8811 |
| 10 | Inner Tube Assembly, SS316 | |
| | 39" (1000 mm) | 8819 |
| | 47" (1200 mm) | 8820 |
| 11 | O-Ring, Buna, (2 Required) | 8823 |
| 12 | O-Ring, Buna | 836 |
| 13 | Tri-Clamp, SS316 | 833 |
| 14 | Outer Tube Assembly, SS316 | |
| | 39" (1000 mm) | 8814 |
| | 47" (1200 mm) | 8815 |
| 15 | Pump Housing, SS316 | 8824 |
| 16 | Bushing, PTFE | 8825 |
| 17 | Impeller, High Volume, SS316 (SP-8800) | 8827 |
| 18 | Pump Foot, High Volume, SS316 (SP-8800) | 8826 |
| 19 | Turbine Meter | HM150FF00 |
| 20 | Control Module | HRT1000 |
| 21 | Hose Barb | |
| | 1" (25 mm) | 8833 |
| 22 | Motor | |
| | TEFC, 110-120V | SP-ENC-V |
| | TEFC, 220-240V | SP-ENC-2-V |
| | Air Motor, 1/2 HP (370 W) | SP-A1 |

Figure 10 – Flow Meter System