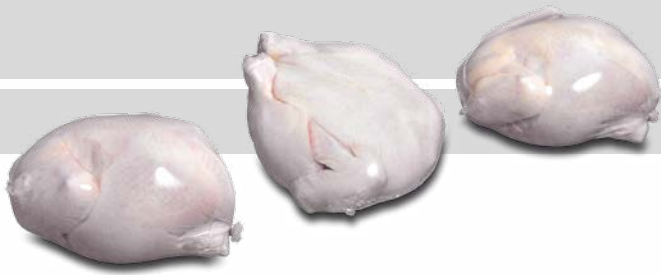


MCS

Modular Conveyor Systems



innovative · reliable · leading

poly-clip[®]
SYSTEM

- Modular plastic belts are customisable
- Wide choice of application-oriented conveyor solutions
- High cleaning efficiency
- High level of food safety
- Increased efficiency and reduced costs as a result of optimised solutions



Applications

MCS Modular Conveyor Systems are employed in many areas of industry. They are ideally suited for the transportation of whole birds or poultry parts, but are also used throughout the meat industry as a whole.

Advantages

- Hygienic design for easy cleaning with low water consumption
- Wide range of belt surfaces to suit the nature of product involved
- High-quality materials for long service life
- Individually expandable

Optional equipment

The MCS modular conveyor systems offer a wide range of combinations of belt models, accessories, materials and colours, with a view to providing optimal customised solutions.

The modular plastic components are available for straight stretches, curves, rising and falling stretches and other types of section. They are also available in metal-detectable materials. MCS modular conveyor systems are optimally adjusted to specific customer requirements.

Function

For the success of a meat processing enterprise first-class hygiene is of critical importance. The careful selection of belt materials and components increases the efficiency of plant hygiene measures and reduces contamination risks to a minimum. And the optimal adaptation of belt modules to the line as a whole, and the correct selection of belt surfaces, help to ensure seamless transition between modules. The quality of sensitive foodstuffs is thus retained.



Individual integration into the packaging line

Example of a belt section with motor housing



Technical data

Customised solutions on demand