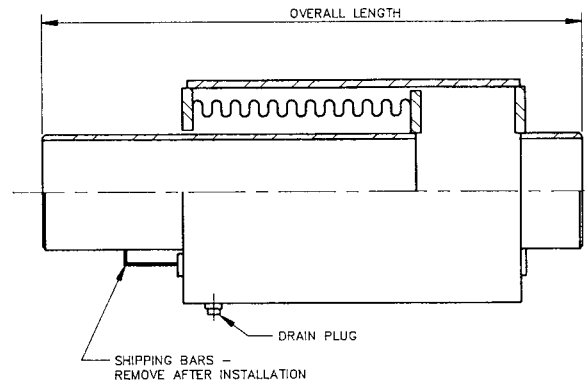
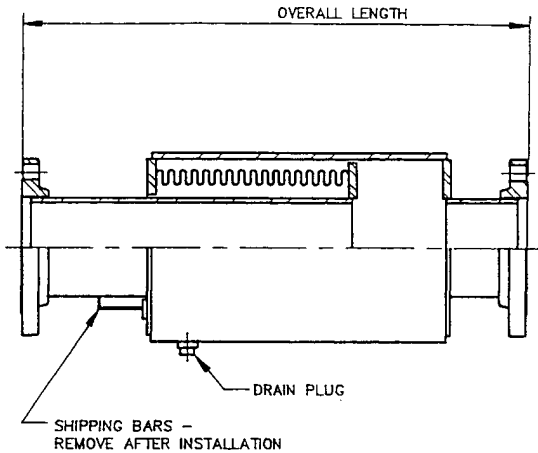


**UNISOURCE**  
**STYLE EP**  
*Single, Externally*  
*Pressurized*  
*Expansion Joint*  
**300 PSIG, 8" Travel**



Quant	Size (In.)	Overall Lgth Flanged (In.)	Overall Lgth Weld Ends (In.)	Effective Area (In. <sup>2</sup> )	Rated Compression (In.)	Rated Extension (In.)	Part #	Axial Spring Rate (Lbs./In.)	Max. Oper Pressure @ 650°F. (PSIG)	Weight Flanged (Lbs.)	Weight Weld Ends (Lbs.)
	1-1/2	37-1/4	35	6	8.0	1.50	S15300EP-8.0-XX-XX-OAL	86	300	48	35
	2	41-3/4	39-1/4	12	8.0	1.50	S2300EP-8.0-XX-XX-OAL	194	300	72	58
	2-1/2	41-3/4	39-1/4	12	8.0	1.50	S25300EP-8.0-XX-XX-OAL	194	300	84	63
	3	39-3/4	37-1/4	16	8.0	1.50	S3300EP-8.0-XX-XX-OAL	252	300	106	78
	4	41-1/4	38-1/2	30	8.0	1.50	S4300EP-8.0-XX-XX-OAL	424	300	170	124
	5	36-3/4	33-3/4	42	8.0	1.50	S5300EP-8.0-XX-XX-OAL	501	300	203	143
	6	37-1/2	33-3/4	53	8.0	1.50	S6300EP-8.0-XX-XX-OAL	570	300	239	155
	8	40	35-3/4	83	8.0	1.50	S8300EP-8.0-XX-XX-OAL	1212	300	377	250
	10	44-3/4	40	135	8.0	2.00	S10300EP-8.0-XX-XX-OAL	1633	300	534	354
	12	47-3/4	42-1/4	182	8.0	2.00	S12300EP-8.0-XX-XX-OAL	1745	300	712	457
	14	48	42-1/4	212	8.0	2.00	S143000EP-8.0-XX-XX-OAL	1328	300	966	607

XX-XX: 58-58 = CL 300# ANSI drilled C/S RFSO Forged Flanges  
 42-42 = Sch 40 C/S Beveled Weld Ends

Note: (1) Sizes larger than 14" available upon request. (2) If installed vertically, position with traveling end up to avoid trapping media.

Customer: \_\_\_\_\_  
 Project: \_\_\_\_\_  
 Engineer: \_\_\_\_\_  
 PO#: \_\_\_\_\_

**Materials**  
**Bellows:** Multiply 304 S/S.  
**Ends:**  
 Flanges: 300# ANSI B 16.5 RFSO C/S  
 Weld Ends: Sch 40 C/S  
**Pipe/Shell:** C/S Sch Standard  
**Drain Port:** C/S w/taped plug  
**Anchor Base:** None  
**Lifting Lugs:** Used on all units



Portland, OR

DRAWING EPS-8.0-300 1/24/03

M