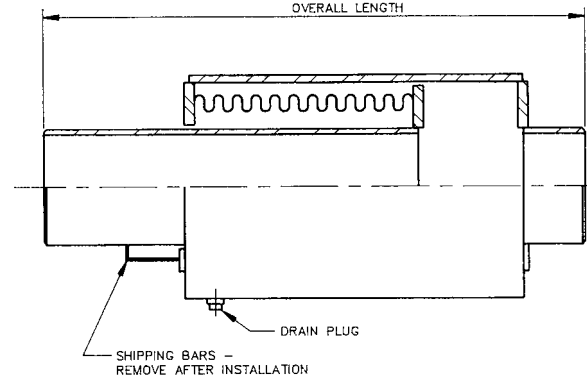
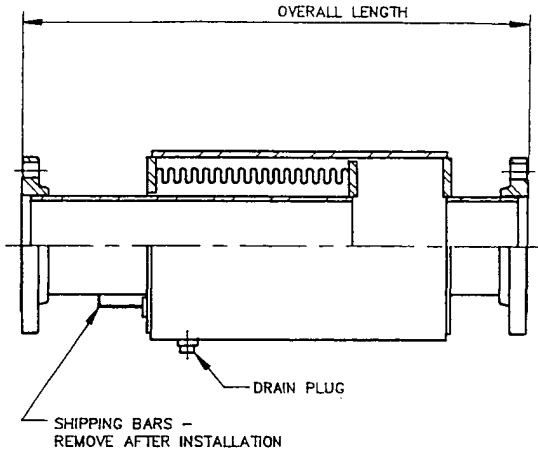


UNISOURCE
STYLE EP
Single, Externally
Pressurized
Expansion Joint
150 PSIG, 8" Travel



Quant	Size (In.)	Overall Lgth Flanged (In.)	Overall Lgth Weld Ends (In.)	Effective Area (In. ²)	Rated Compression (In.)	Rated Extension (In.)	Part #	Axial Spring Rate (Lbs./In.)	Max. Oper Pressure @ 650°F. (PSIG)	Weight Flanged (Lbs.)	Weight Weld Ends (Lbs.)
	1-1/2	36-3/4	35	6	8.0	1.50	S15150EP-8.0-XX-XX-OAL	43	150	39	33
	2	41-1/2	39-1/4	12	8.0	1.50	S2150EP-8.0-XX-XX-OAL	97	150	65	55
	2-1/2	41-1/2	39-1/4	12	8.0	1.50	S25150EP-8.0-XX-XX-OAL	97	150	75	60
	3	39-1/2	37-1/4	16	8.0	1.50	S3150EP-8.0-XX-XX-OAL	126	150	91	74
	4	41-1/4	38-1/2	30	8.0	1.50	S4150EP-8.0-XX-XX-OAL	212	150	144	116
	5	36-1/4	33-3/4	42	8.0	1.50	S5150EP-8.0-XX-XX-OAL	251	150	171	138
	6	36-1/4	33-3/4	53	8.0	1.50	S6150EP-8.0-XX-XX-OAL	285	150	191	149
	8	38-1/2	35-3/4	83	8.0	1.50	S8150EP-8.0-XX-XX-OAL	606	150	302	236
	10	43-1/4	40	135	8.0	2.00	S10150EP-8.0-XX-XX-OAL	533	150	434	337
	12	45-1/4	41-3/4	182	8.0	2.00	S12150EP-8.0-XX-XX-OAL	609	150	562	419
	14	45-1/2	41-3/4	212	8.0	2.00	S14150EP-8.0-XX-XX-OAL	1053	150	671	473

XX-XX: 48-48 = 150# C/S RFSO Flanges
 42-42 = Sch 40 C/S Beveled Weld Ends

Note: (1) Sizes larger than 14" available upon request. (2) If installed vertically, position with traveling end up to avoid trapping media.

Customer: _____
 Project: _____
 Engineer: _____
 PO#: _____

Materials
Bellows: Single or multiply 304 S/S.
Ends:
 Flanges: 150# ANSI B 16.5 RFSO C/S
 Weld Ends: Sch 40 C/S
Pipe/Shell: C/S Sch Standard
Drain Port: C/S w/taped plug
Anchor Base: None
Lifting Lugs: Used on all units



Portland, OR

DRAWING EPS-8.0-150 9/25/02

M