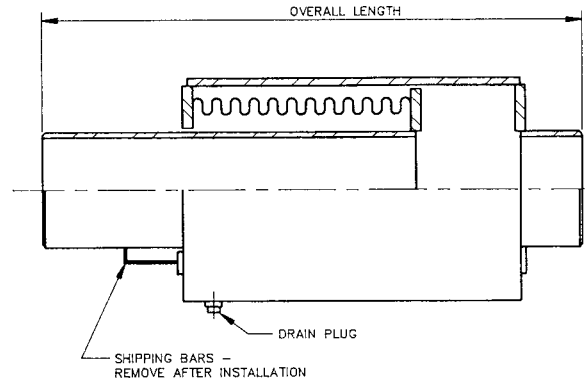
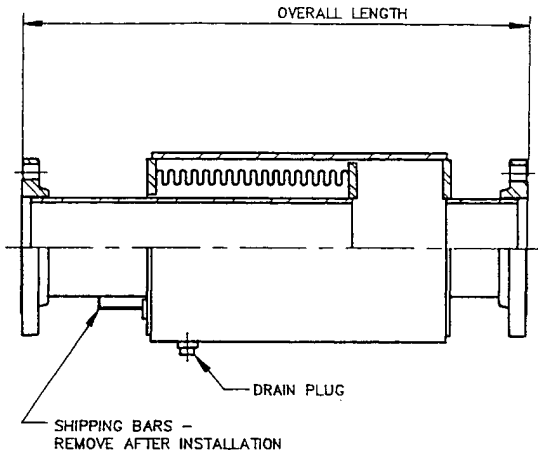


**UNISOURCE**  
**STYLE EP**  
*Single, Externally*  
*Pressurized*  
*Expansion Joint*  
**300 PSIG, 6" Travel**



Quant	Size (In.)	Overall Lgth Flanged (In.)	Overall Lgth Weld Ends (In.)	Effective Area (In. <sup>2</sup> )	Rated Compression (In.)	Rated Extension (In.)	Part #	Axial Spring Rate (Lbs./In.)	Max. Oper Pressure @ 650°F. (PSIG)	Weight Flanged (Lbs.)	Weight Weld Ends (Lbs.)
	1-1/2	31-1/4	28-3/4	6	6.0	1.12	S15300EP-6.0-XX-XX-OAL	114	300	41	30
	2	34-3/4	32	12	6.0	1.12	S2300EP-6.0-XX-XX-OAL	260	300	63	48
	2-1/2	34-3/4	32	12	6.0	1.12	S25300EP-6.0-XX-XX-OAL	260	300	73	52
	3	31-1/4	28-1/2	16	6.0	1.12	S3300EP-6.0-XX-XX-OAL	380	300	87	59
	4	32-1/2	29-1/2	30	6.0	1.12	S4300EP-6.0-XX-XX-OAL	566	300	141	94
	5	30-3/4	27-1/2	42	6.0	1.12	S5300EP-6.0-XX-XX-OAL	668	300	181	120
	6	31-1/4	27-1/2	53	6.0	1.12	S6300EP-6.0-XX-XX-OAL	760	300	214	130
	8	33-1/2	29	83	6.0	1.12	S8300EP-6.0-XX-XX-OAL	1616	300	336	209
	10	35-3/4	30-3/4	135	6.0	1.50	S10300EP-6.0-XX-XX-OAL	2177	300	452	272
	12	38-1/4	32-1/2	182	6.0	1.50	S12300EP-6.0-XX-XX-OAL	2327	300	610	355
	14	38-1/2	32-1/2	212	6.0	1.50	S143000EP-6.0-XX-XX-OAL	1770	300	828	468

XX-XX: 58-58 = CL 300# ANSI drilled C/S RFSO Forged Flanges  
 42-42 = Sch 40 C/S Beveled Weld Ends

Note: (1) Sizes larger than 14" available upon request. (2) If installed vertically, position with traveling end up to avoid trapping media.

Customer: \_\_\_\_\_  
 Project: \_\_\_\_\_  
 Engineer: \_\_\_\_\_  
 PO#: \_\_\_\_\_

**Materials**  
**Bellows:** Multiply 304 S/S.  
**Ends:**  
 Flanges: 300# ANSI B 16.5 RFSO C/S  
 Weld Ends: Sch 40 C/S  
**Pipe/Shell:** C/S Sch Standard  
**Drain Port:** C/S w/taped plug  
**Anchor Base:** None  
**Lifting Lugs:** Used on all units



Portland, OR

DRAWING EPS-6.0-300 1/24/03

M