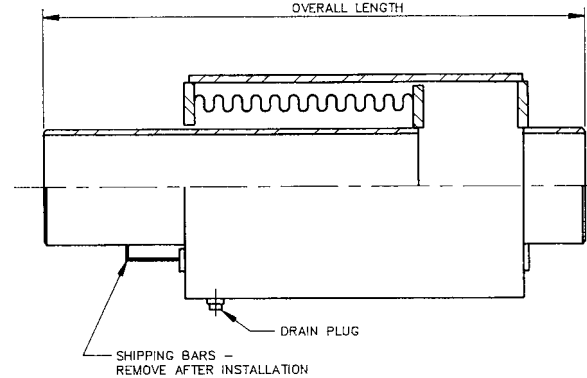
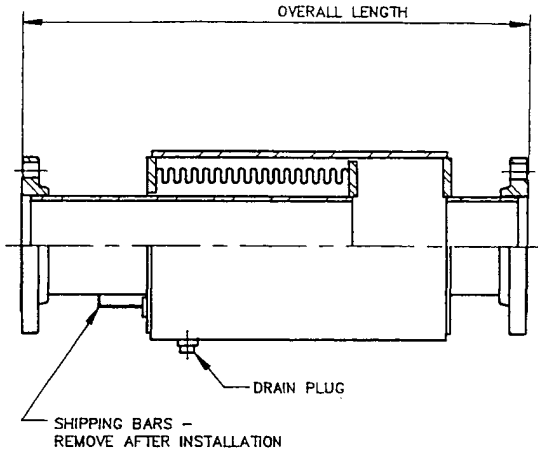


UNISOURCE
STYLE EP
Single, Externally
Pressurized
Expansion Joint
150 PSIG, 4" Travel



Quant	Size (In.)	Overall Lgth Flanged (In.)	Overall Lgth Weld Ends (In.)	Effective Area (In. ²)	Rated Compression (In.)	Rated Extension (In.)	Part #	Axial Spring Rate (Lbs./In.)	Max. Oper Pressure @ 650°F. (PSIG)	Weight Flanged (Lbs.)	Weight Weld Ends (Lbs.)
	1-1/2	22-3/4	21	6	4.0	0.75	S15150EP-4.0-XX-XX-OAL	85	150	26	20
	2	25-1/2	23-1/4	12	4.0	0.75	S2150EP-4.0-XX-XX-OAL	194	150	44	33
	2-1/2	25-1/2	23-1.4	12	4.0	0.75	S25150EP-4.0-XX-XX-OAL	194	150	51	35
	3	24-1/2	22-1/4	16	4.0	0.75	S3150EP-4.0-XX-XX-OAL	252	150	63	46
	4	25-3/4	22-3/4	30	4.0	0.75	S4150EP-4.0-XX-XX-OAL	425	150	99	72
	5	24	21-1/2	42	4.0	0.75	S5150EP-4.0-XX-XX-OAL	501	150	128	95
	6	24	21-1/2	53	4.0	0.75	S6150EP-4.0-XX-XX-OAL	570	150	144	102
	8	25-1/4	22-1/2	83	4.0	0.75	S8150EP-4.0-XX-XX-OAL	1212	150	228	161
	10	26-3/4	23-3/4	135	4.0	1.0	S10150EP-4.0-XX-XX-OAL	1065	150	306	209
	12	28	24-1/2	182	4.0	1.0	S12150EP-4.0-XX-XX-OAL	1217	150	400	257
	14	28-1/4	24-1/2	212	4.0	1.0	S14150EP-4.0-XX-XX-OAL	1328	150	491	293

XX-XX: 48-48 = 150# C/S RFSO Flanges
 42-42 = Sch 40 C/S Beveled Weld Ends

Note: (1) Sizes larger than 14" available upon request. (2) If installed vertically, position with traveling end up to avoid trapping media.

Customer: _____
 Project: _____
 Engineer: _____
 PO#: _____

Materials
Bellows: Single or multiply 304 S/S.
Ends:
 Flanges: 150# ANSI B 16.5 RFSO C/S
 Weld Ends: Sch 40 C/S
Pipe/Shell: C/S Sch Standard
Drain Port: C/S w/taped plug
Anchor Base: None
Lifting Lugs: Used on all units



Portland, OR

DRAWING EPS-4.0-150 9/25/02

M