



CURVE

- Ricavate da tubi elettrouniti con sistema TIG, laminati a freddo e solubilizzati in atmosfera controllata.
- Calibrate internamente ed esternamente al fine di ottenere una buona circolarità.
- Intestate alle estremità per assicurare la perfetta ortogonalità dei piani.
- Produzione standard: curve a 45°, 90°, 180°. A richiesta, disponibili in differenti spessori e corredate di raccordi mandrinati o saldati.
- Finitura standard: lucidatura esterna e satinatura interna grana 120 norme DIN; satinatura esterna e interna grana 120 norme SMS, BS, ISS. Altre finiture a richiesta.

BENDS

- Made from pipe electrojointed with the TIG method, cold-rolled and solution heat-treated in controlled atmosphere.
- Gauged inside and outside to obtain good roundness.
- Faced on the ends to ensure perfect right angles of planes.
- Standard production: 45°, 90° and 180° bends. On request available in different thicknesses and available with expanded or welded unions.
- Standard finish: 120 grain external polishing and internal glazing to DIN standards; 120 grain external and internal glazing to SMS, BS and ISS standards. Other finishes on request.

COUDES

- Obtenus à partir de tubes électrosoudés avec le système TIG, laminés à froid et solubilisés en atmosphère contrôlée.
- Calibrés à l'intérieur et à l'extérieur afin d'obtenir une bonne circularité.
- Façonnés aux extrémités pour assurer l'orthogonalité parfaite des plans.
- Production standard: coudes à 45°, 90°, 180°. Sur demande, disponibles en différentes épaisseurs et munis de raccords dudgeonnés ou soudés.
- Finissage standard: polissage extérieur et satinage intérieur grain 120 normes DIN; satinage extérieur et intérieur grain 120 normes SMS, BS, ISS. Autres finissages sur demande.

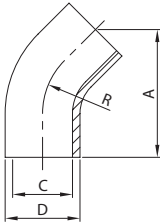
CODOS

- Obtenidos a partir de tubos unidos eléctricamente mediante el sistema TIG, laminados en frío y solubilizados en atmósfera controlada.
- Calibrados interior y exteriormente con la finalidad de obtener una forma circular perfecta.
- Trabajados en los extremos para asegurar que las superficies sean perfectamente ortogonales.
- Producción estándar: codos a 45°, 90°, 180°. A pedido, se pueden suministrar en diferentes espesores y se pueden equipar con racores mandrilados o soldados.
- Acabado estándar: pulido exterior y satinado interior grano 120 normas DIN; satinado exterior e interior grano 120 normas SMS, BS, ISS. A pedido, se pueden suministrar otros acabados.



**CURVA 45° EL.
BEND 45° PE.
COUDE 45° BL.
CODO 45° EL.**

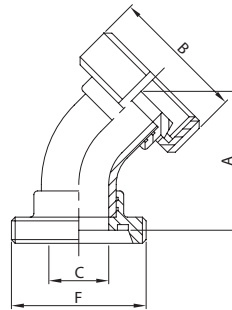
300 L



DN	A	C	D	R	gr
12	45,0	10,0	12,0	26,0	40
18	60,0	16,0	18,0	35,0	50
22	65,0	20,0	22,0	40,0	60
28	73,0	25,0	28,0	50,0	62
34	83,0	31,0	34,0	55,0	85
40	89,0	37,0	40,0	60,0	120
52	103,0	49,0	52,0	70,0	190
70	108,0	66,0	70,0	80,0	390
85	120,0	81,0	85,0	90,0	470
101	137,0	97,6	101,6	110,0	930
104	137,0	100,0	104,0	100,0	930

**CURVA 45° BF/BC. G. MT.
BEND 45° MP/TP. N. ED.
COUDE 45° PF/PC. E. DN.
CODO 45° M./C. T. MD.**

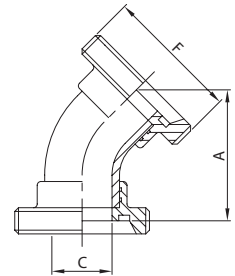
303 D



DN	A	B	C	F	gr
25	91,0	63,5	25,0	52-6	439
32	100,3	70,0	31,0	58-6	555
40	104,5	78,0	37,0	65-6	705
50	118,5	92,0	49,0	78-6	990
65	124,5	112,0	66,0	95-6	1.605
80	140,7	127,0	81,0	110-4	2.220
100	173,7	148,0	97,6	130-4	3.700
104	173,7	148,0	100,0	130-4	3.700

**CURVA 45° BF/BF. MT.
BEND 45° MP/MP. ED.
COUDE 45° PF/PF. DN.
CODO 45° M./M. MD.**

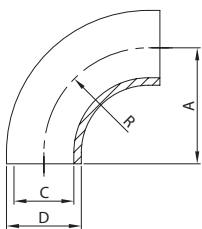
304 D



DN	A	C	F	gr
25	96,0	25,0	52-6	325
32	105,6	31,0	58-6	425
40	110,0	37,0	65-6	540
50	124,0	49,0	78-6	750
65	130,5	66,0	95-6	1.150
80	146,0	81,0	110-4	1.670
100	180,0	97,6	130-4	2.930
104	180,0	100,0	130-4	2.930

**CURVA 90° ES.
BEND 90° WE.
COUDE 90° BS.
CODO 90° ES.**

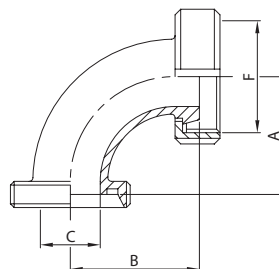
310 D



DN	A	C	D	R	gr
10	26,0	10,0	12,0	26,0	18
15	35,0	16,0	18,0	35,0	20
20	40,0	20,0	22,0	40,0	50
25	50,0	25,0	28,0	50,0	65
32	55,0	31,0	34,0	55,0	100
40	60,0	37,0	40,0	60,0	150
50	70,0	49,0	52,0	70,0	190
65	80,0	66,0	70,0	80,0	410
80	90,0	81,0	85,0	90,0	530
100	110,0	97,6	101,6	110,0	810
104	100,0	100,0	104,0	100,0	810
125	188,0	125,0	129,0	188,0	900

**CURVA 90° BF/BC. G. ST.
BEND 90° MP/TP. N. WD.
COUDE 90° PF/PC. E. SD.
CODO 90° M./C. T. SD.**

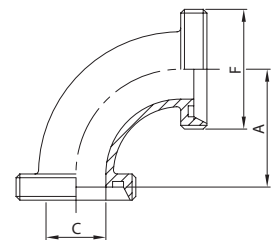
313 D



DN	A	B	C	F	gr
25	77,0	77,0	25,0	52-6	465
32	85,0	85,0	31,0	58-6	615
40	92,0	92,0	37,0	65-6	790
50	103,0	103,0	49,0	78-6	1.096
65	117,0	117,0	66,0	95-6	1.730
80	132,0	132,0	81,0	110-4	2.470
100	149,0	149,0	97,6	130-4	3.950
104	149,0	149,0	100,0	130-4	3.950

**CURVA 90° BF/BF. ST.
BEND 90° MP/MP. WD.
COUDE 90° PF/PF. SD.
CODO 90° M./M. SD.**

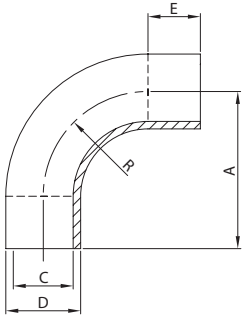
314 D



DN	A	C	F	gr
25	77,0	25,0	52-6	345
32	85,0	31,0	58-6	460
40	92,0	37,0	65-6	630
50	103,0	49,0	78-6	908
65	117,0	66,0	95-6	1.250
80	132,0	81,0	110-4	1.870
100	149,0	97,6	130-4	3.290
104	149,0	100,0	130-4	3.290

**CURVA 90° EM.
BEND 90° EE.
COUDE 90° BD.
CODO 90° EM.**

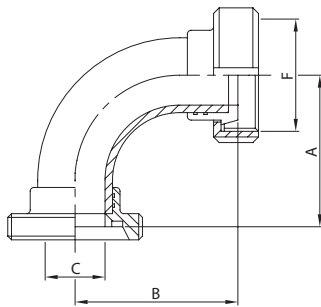
350 D



DN	A	C	D	E	R	gr
10	38,0	10,0	12,0	12,0	26,0	30
15	47,0	16,0	18,0	12,0	35,0	55
20	52,0	20,0	22,0	12,0	40,0	60
25	70,0	25,0	28,0	20,0	55,0	110
32	78,0	31,0	34,0	23,0	56,0	160
40	85,0	37,0	40,0	25,0	60,0	215
50	97,0	49,0	52,0	27,0	70,0	300
65	110,0	66,0	70,0	30,0	80,0	570
80	123,0	81,0	85,0	33,0	90,0	780
100	150,0	97,6	101,6	40,0	110,0	1.200
104	140,0	100,0	104,0	40,0	100,0	1.200

**CURVA 90° BF/BC. G. MT.
BEND 90° MP/TP. N. ED.
COUDE 90° PF/PC. E. DN.
CODO 90° M./C. T. MD.**

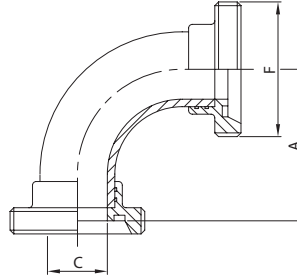
353 D



DN	A	B	C	F	gr
25	77,0	77,0	25,0	52-6	487
32	85,0	85,0	31,0	58-6	630
40	91,0	91,0	37,0	65-6	800
50	103,0	103,0	49,0	78-6	1.100
65	117,0	117,0	66,0	95-6	1.785
80	132,0	132,0	81,0	110-4	2.530
100	149,0	149,0	97,6	130-4	3.970
104	149,0	149,0	100,0	130-4	3.970

**CURVA 90° BF/BF. MT.
BEND 90° MP/MP. ED.
COUDE 90° PF/PF. DN.
CODO 90° M./M. MD.**

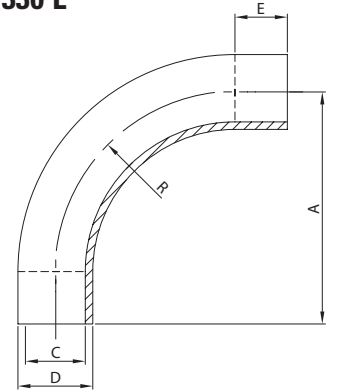
354 D



DN	A	C	F	gr
25	77,0	25,0	52-6	374
32	85,0	31,0	58-6	500
40	91,0	37,0	65-6	625
50	103,0	49,0	78-6	860
65	117,0	66,0	95-6	1.330
80	132,0	81,0	110-4	1.980
100	149,0	97,6	130-4	3.200
104	149,0	100,0	130-4	3.200

**CURVA 90° EM.
BEND 90° EE.
COUDE 90° BD.
CODO 90° EM.**

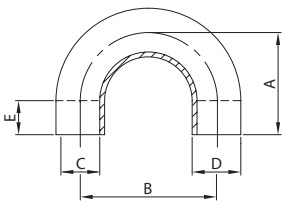
330 L



DN	A	C	D	E	R	gr
28	134,0	25,0	28,0	50,0	84,0	220
34	152,0	31,0	34,0	50,0	102,0	310
40	170,0	37,0	40,0	50,0	120,0	410
52	206,0	49,0	52,0	50,0	156,0	650
70	260,0	66,0	70,0	50,0	210,0	1.400
85	305,0	81,0	85,0	50,0	255,0	2.000
101	354,0	97,6	101,6	50,0	304,0	2.800
104	362,0	100,0	104,0	50,0	312,0	2.900

**CURVA 180° EL.
BEND 180° PE.
COUDE 180° BL.
CODO 180° EL.**

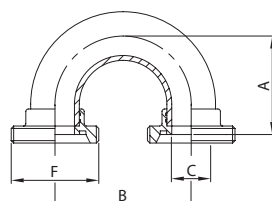
390 L



DN	A	B	C	D	E	gr
12	38,0	52,0	10,0	12,0	50,0	60
18	47,0	70,0	16,0	18,0	50,0	110
22	52,0	80,0	20,0	22,0	50,0	120
28	100,0	100,0	25,0	28,0	50,0	185
34	105,0	110,0	31,0	34,0	50,0	240
40	110,0	120,0	37,0	40,0	50,0	350
52	120,0	140,0	49,0	52,0	50,0	410
70	130,0	160,0	66,0	70,0	50,0	970
85	140,0	180,0	81,0	85,0	50,0	1.500
101	140,0	220,0	97,6	101,6	50,0	2.400
104	140,0	220,0	100,0	104,0	50,0	2.400

**CURVA 180° BF/BF. MT.
BEND 180° MP/MP. ED.
COUDE 180° PF/PF. DN.
CODO 180° M./M. MD.**

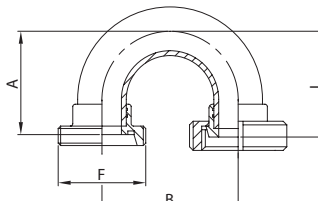
391 D



DN	A	B	C	F	gr
25	77,0	100,0	25,0	52-6	450
32	85,0	110,0	31,0	58-6	580
40	91,0	120,0	37,0	65-6	770
50	103,0	140,0	49,0	78-6	970
65	117,0	160,0	66,0	95-6	1.730
80	132,0	180,0	81,0	110-4	2.700
100	149,0	220,0	97,6	130-4	4.400
104	149,0	220,0	100,0	130-4	4.400

**CURVA 180° BF/BC. G. MT.
BEND 180° MP/TP. N. ED.
COUDE 180° PF/PC. E. DN.
CODO 180° M./C. T. MD.**

393 D

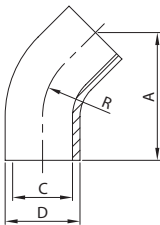


DN	A	B	F	L	gr
25	77,0	100,0	52-6	77,0	562
32	85,0	110,0	58-6	85,0	710
40	91,0	120,0	65-6	91,0	995
50	103,0	140,0	78-6	103,0	1.210
65	117,0	160,0	95-6	117,0	2.185
80	132,0	180,0	110-4	132,0	3.250
100	149,0	220,0	130-4	149,0	5.170
104	149,0	220,0	130-4	149,0	5.170



**CURVA 45° EL.
BEND 45° PE.
COUDE 45° BL.
CODO 45° EL.**

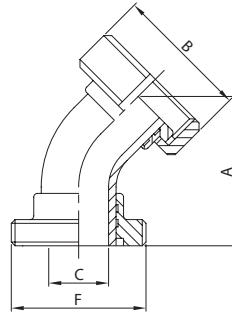
300 L



DN	A	C	D	R	gr
25	77,0	22,4	25,4	38,0	70
38	85,5	35,1	38,1	57,0	120
51	109,0	47,8	50,8	76,0	215
63	111,5	60,5	63,5	95,0	350
76	120,0	72,9	76,2	114,0	510
101	137,0	97,6	101,6	110,0	930
104	137,0	100,0	104,0	100,0	950

**CURVA 45° BF/BL. G. MT.
BEND 45° MP/L. N. ED.
COUDE 45° PF/PL. E. DN.
CODO 45° M./C. T. MD.**

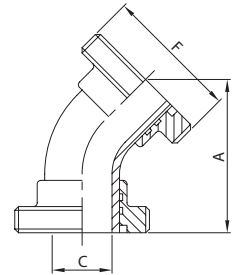
303 S



DN	A	B	C	F	gr
25	80,0	51,0	22,4	40-6	295
38	105,0	74,0	35,1	60-6	710
51	103,0	84,0	47,8	70-6	875
63	115,0	100,0	60,5	85-6	1.450
76	135,0	114,0	72,9	98-6	1.960
101	151,0	151,0	97,6	132-6	3.790

**CURVA 45° BF/BF. MT.
BEND 45° MP/MP. ED.
COUDE 45° PF/PF. DN.
CODO 45° M./M. MD.**

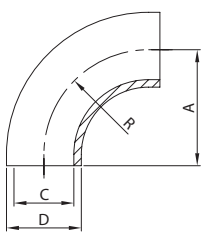
304 S



DN	A	C	F	gr
25	80,0	22,4	40-6	210
38	105,0	35,1	60-6	520
51	103,0	47,8	70-6	665
63	115,0	60,5	85-6	1.130
76	135,0	72,9	98-6	1.510
101	151,0	97,6	132-6	3.210

**CURVA 90° ES.
BEND 90° WE.
COUDE 90° BS.
CODO 90° ES.**

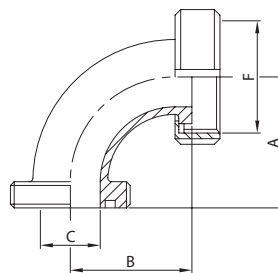
310 S



DN	A	C	D	R	gr
25	38,0	22,4	25,4	38,0	45
38	57,0	35,1	38,1	57,0	115
51	76,0	47,8	50,8	76,0	200
63	95,0	60,5	63,5	95,0	320
76	114,0	72,9	76,2	114,0	510
101	110,0	97,6	101,6	110,0	810
104	100,0	100,0	104,0	100,0	850

**CURVA 90° BF/BL. G. ST.
BEND 90° MP/L. N. WD.
COUDE 90° PF/PL. E. SD.
CODO 90° M./C. T. SD.**

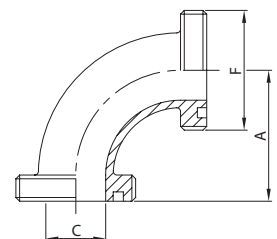
313 S



DN	A	B	C	F	gr
25	55,0	55,0	22,4	40-6	250
38	70,0	70,0	35,1	60-6	650
51	82,0	82,0	47,8	70-6	780
63	105,0	105,0	60,5	85-6	1.265
76	110,0	110,0	72,9	98-6	1.775
101	150,0	150,0	97,6	132-6	3.080

**CURVA 90° BF/BF. ST.
BEND 90° MP/MP. WD.
COUDE 90° PF/PF. SD.
CODO 90° M./M. SD.**

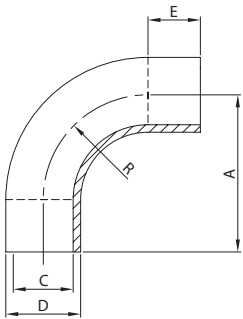
314 S



DN	A	C	F	gr
25	55,0	22,4	40-6	175
38	70,0	35,1	60-6	495
51	82,0	47,8	70-6	600
63	105,0	60,5	85-6	1.060
76	110,0	72,9	98-6	1.470
101	150,0	97,6	132-6	2.810

**CURVA 90° EM.
BEND 90° EE.
COUDE 90° BD.
CODO 90° EM.**

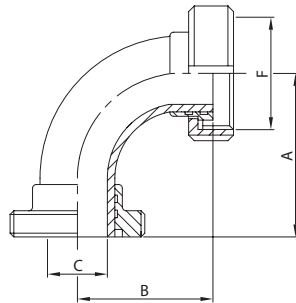
350 S



DN	A	C	D	E	R	gr
25	55,0	22,9	25,4	30,0	25,0	90
38	70,0	35,6	38,1	32,0	38,0	180
51	82,0	47,8	50,8	31,0	51,0	300
63	105,0	60,5	63,5	41,0	64,0	490
76	110,0	72,9	76,2	34,0	76,0	900
101	150,0	97,6	101,6	40,0	110,0	1.200
104	140,0	100,0	104,0	40,0	100,0	1.250

**CURVA 90° BF./BL. G. MT.
BEND 90° MP./L. N. ED.
COUDE 90° PF./PL. E. DN.
CODO 90° M./C. T. MD.**

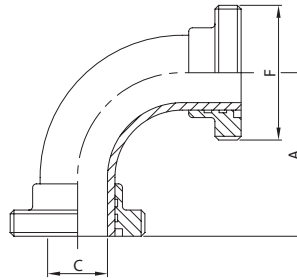
353 S



DN	A	B	C	F	gr
25	55,0	55,0	22,9	40-6	315
38	70,0	70,0	35,6	60-6	770
51	82,0	82,0	47,8	70-6	960
63	105,0	105,0	60,5	85-6	1.590
76	110,0	110,0	72,9	98-6	2.530
101	150,0	150,0	97,6	132-6	4.110

**CURVA 90° BF./BF. MT.
BEND 90° MP./MP. ED.
COUDE 90° PF./PF. DN.
CODO 90° M./M. MD.**

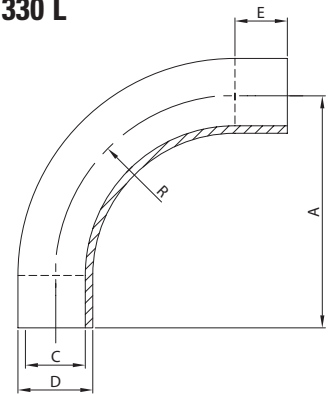
354 S



DN	A	C	F	gr
25	55,0	22,9	40-6	230
38	70,0	35,6	60-6	580
51	82,0	47,8	70-6	750
63	105,0	60,5	85-6	1.270
76	110,0	72,9	98-6	1.900
101	150,0	97,6	132-6	3.530

**CURVA 90° EM.
BEND 90° EE.
COUDE 90° BD.
CODO 90° EM.**

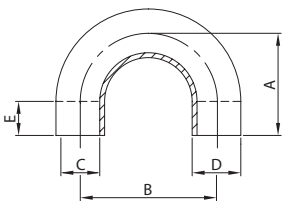
330 L



DN	A	C	D	E	R	gr
25	125,0	22,4	25,4	50,0	75,0	190
38	132,0	35,1	38,1	50,0	82,0	300
51	200,0	47,8	50,8	50,0	150,0	630
63	230,0	60,5	63,5	50,0	180,0	870
76	278,0	72,9	76,2	50,0	228,0	1.600
101	354,0	97,6	101,6	50,0	304,0	2.800

**CURVA 180° EL.
BEND 180° PE.
COUDE 180° BL.
CODO 180° EL.**

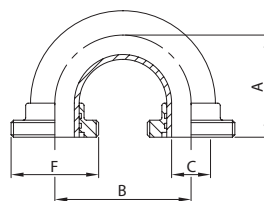
390 L



DN	A	B	C	D	E	gr
25	86,5	73,0	22,4	25,4	50,0	170
38	102,0	104,0	35,1	38,1	50,0	250
51	125,5	151,0	47,8	50,8	50,0	480
63	140,0	180,0	60,5	63,5	50,0	700
76	147,0	194,0	72,2	76,2	50,0	1.180
101	150,0	220,0	97,6	101,6	50,0	2.400
104	150,0	220,0	100,4	104,0	50,0	2.400

**CURVA 180° BF./BF. MT.
BEND 180° MP./MP. ED.
COUDE 180° PF./PF. DN.
CODO 180° M./M. MD.**

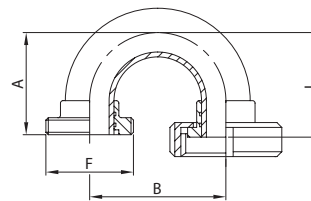
391 S



DN	A	B	C	F	gr
25	75,0	81,0	22,4	40-6	310
38	90,0	104,0	35,1	60-6	650
51	100,0	143,0	47,8	70-6	930
63	115,0	168,0	60,5	85-6	1.480
76	130,0	171,0	72,9	98-6	2.180
101	150,0	220,0	97,6	132-6	4.680

**CURVA 180° BF./BL. G. MT.
BEND 180° MP./L. N. ED.
COUDE 180° PF./PL. E. DN.
CODO 180° M./C. T. MD.**

393 S

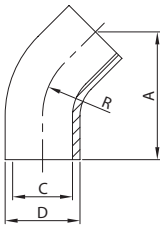


DN	A	B	F	L	gr
25	75,0	81,0	40-6	75,0	395
38	90,0	104,0	60-6	90,0	840
51	100,0	143,0	70-6	100,0	1.140
63	115,0	168,0	85-6	115,0	1.800
76	130,0	171,0	98-6	130,0	2.630
101	150,0	220,0	132-6	150,0	5.260



**CURVA 45° EL.
BEND 45° PE.
COUDE 45° BL.
CODO 45° EL.**

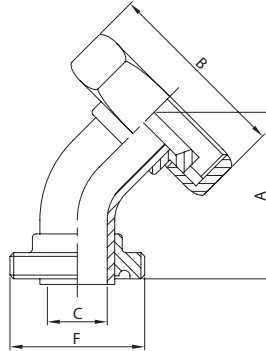
300 L



DN	A	C	D	R	gr
25	77,0	22,4	25,4	38,0	70
38	85,5	35,1	38,1	57,0	120
51	109,0	47,8	50,8	76,0	215
63	111,5	60,5	63,5	95,0	350
76	120,0	72,9	76,2	114,0	510
101	137,0	97,6	101,6	110,0	930

**CURVA 45° BF/BL. G. MT.
BEND 45° MP/L. N. ED.
COUDE 45° PF/PL. E. DN.
CODO 45° M./C. T. MD.**

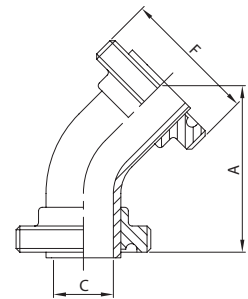
303 B



DN	A	B	C	F	gr
25	80,0	51,0	22,4	46-8	355
38	105,0	65,0	35,1	58-8	570
51	103,0	80,0	47,8	73-6	860
63	115,0	92,0	60,5	85-6	1.290
76	135,0	104,0	72,9	98-6	1.585
101	151,0	130,0	97,6	123-6	2.370

**CURVA 45° BF/BF. MT.
BEND 45° MP/MP. ED.
COUDE 45° PF/PF. DN.
CODO 45° M./M. MD.**

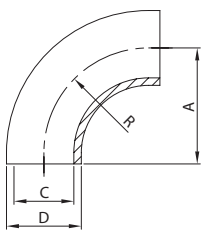
304 B



DN	A	C	F	gr
25	80,0	22,4	46-8	270
38	105,0	35,1	58-8	430
51	103,0	47,8	73-6	685
63	115,0	60,5	85-6	930
76	135,0	72,9	98-6	1.240
101	151,0	97,6	123-6	1.990

**CURVA 90° ES.
BEND 90° WE.
COUDE 90° BS.
CODO 90° ES.**

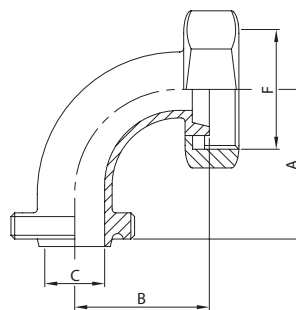
310 B



DN	A	C	D	R	gr
25	44,0	22,4	25,4	38,0	45
38	64,0	35,1	38,1	57,0	115
51	89,0	47,8	50,8	76,0	200
63	114,0	60,5	63,5	95,0	320
76	134,0	72,9	76,2	114,0	510
101	174,0	97,6	101,6	110,0	810

**CURVA 90° BF/BL. G. ST.
BEND 90° MP/L. N. WD.
COUDE 90° PF/PL. E. SD.
CODO 90° M./C. T. SD.**

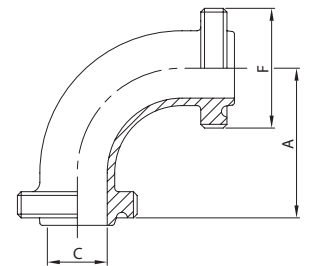
313 B



DN	A	B	C	F	gr
25	60,0	70,0	22,4	46-8	320
38	80,0	90,0	35,1	58-8	530
51	105,0	115,0	47,8	73-6	750
63	130,0	140,0	60,5	85-6	1.140
76	150,0	160,0	72,9	98-6	1.435
101	190,0	200,0	97,6	123-6	2.015

**CURVA 90° BF/BF. ST.
BEND 90° MP/MP. WD.
COUDE 90° PF/PF. SD.
CODO 90° M./M. SD.**

314 B

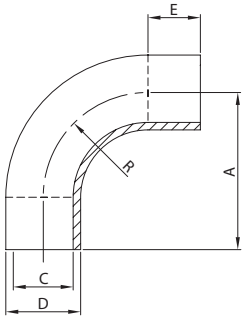


DN	A	C	F	gr
25	60,0	22,4	46-8	275
38	80,0	35,1	58-8	445
51	105,0	47,8	73-6	640
63	130,0	60,5	85-6	910
76	150,0	72,9	98-6	1.220
101	190,0	97,6	123-6	1.810



**CURVA 90° EM.
BEND 90° EE.
COUDE 90° BD.
CODO 90° EM.**

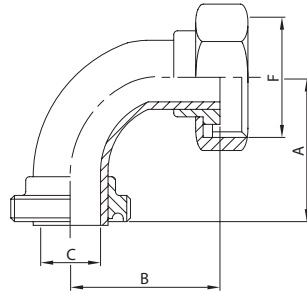
350 B



DN	A	C	D	E	R	gr
25	75,0	22,4	25,4	37,0	38,0	90
38	90,0	35,1	38,1	33,0	57,0	180
51	100,0	47,8	50,8	24,0	76,0	300
63	115,0	60,5	63,5	20,0	95,0	490
76	130,0	72,9	76,2	16,0	114,0	900
101	150,0	97,6	101,6	48,0	152,0	1.200

**CURVA 90° BF./BL. G. MT.
BEND 90° MP./L. N. ED.
COUDE 90° PF./PL. E. DN.
CODO 90° M./C. T. MD.**

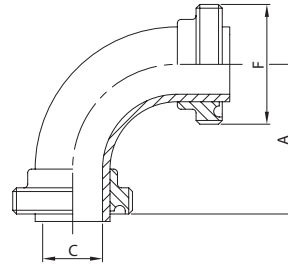
353 B



DN	A	B	C	F	gr
25	60,0	70,0	22,4	46-8	375
38	80,0	90,0	35,1	58-8	630
51	105,0	115,0	47,8	73-6	945
63	130,0	140,0	60,5	85-6	1.430
76	150,0	160,0	72,9	98-6	1.975
101	190,0	200,0	97,6	123-6	2.690

**CURVA 90° BF./BF. MT.
BEND 90° MP./MP. ED.
COUDE 90° PF./PF. DN.
CODO 90° M./M. MD.**

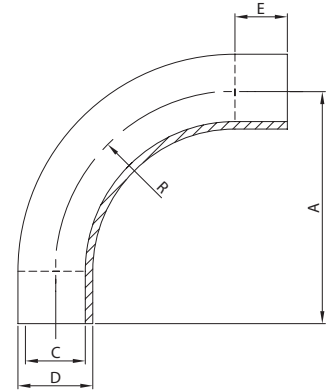
354 B



DN	A	C	F	gr
25	60,0	22,4	46-8	290
38	80,0	35,1	58-8	490
51	105,0	47,8	73-6	770
63	130,0	60,5	85-6	1.070
76	150,0	72,9	98-6	1.630
101	190,0	97,6	123-6	2.310

**CURVA 90° EM.
BEND 90° EE.
COUDE 90° BD.
CODO 90° EM.**

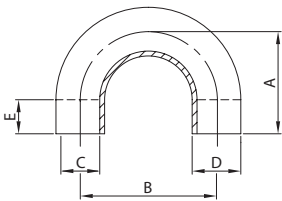
330 L



DN	A	C	D	E	R	gr
25	125,0	22,4	25,4	50,0	75,0	190
38	132,0	35,1	38,1	50,0	82,0	300
51	200,0	47,8	50,8	50,0	150,0	630
63	230,0	60,5	63,5	50,0	180,0	870
76	278,0	72,9	76,2	50,0	228,0	1.600
101	354,0	97,6	101,6	50,0	304,0	2.800

**CURVA 180° EL.
BEND 180° PE.
COUDE 180° BL.
CODO 180° EL.**

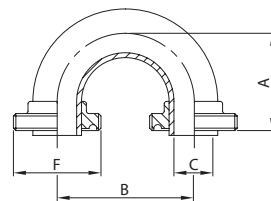
390 L



DN	A	B	C	D	E	gr
25	86,5	73,0	22,4	25,4	50,0	170
38	102,0	104,0	35,1	38,1	50,0	250
51	125,5	151,0	47,8	50,8	50,0	480
63	140,0	180,0	60,5	63,5	50,0	700
76	147,0	194,0	72,2	76,2	50,0	1.180
101	150,0	220,0	97,6	101,6	50,0	2.400

**CURVA 180° BF./BF. MT.
BEND 180° MP./MP. ED.
COUDE 180° PF./PF. DN.
CODO 180° M./M. MD.**

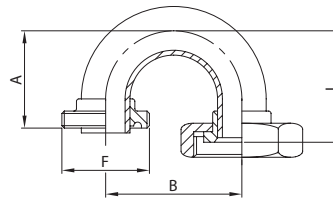
391 B



DN	A	B	C	F	gr
25	60,0	81,0	22,4	46-8	370
38	80,0	104,0	35,1	58-8	560
51	105,0	140,0	47,8	73-6	950
63	130,0	182,0	60,5	85-6	1.280
76	150,0	194,0	72,9	98-6	1.910
101	190,0	220,0	97,6	123-6	3.460

**CURVA 180° BF./BL. G. MT.
BEND 180° MP./L. N. ED.
COUDE 180° PF./PL. E. DN.
CODO 180° M./C. T. MD.**

393 B

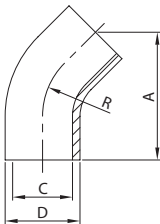


DN	A	B	F	L	gr
25	60,0	81,0	46-8	70,0	455
38	80,0	104,0	58-8	90,0	700
51	105,0	140,0	73-6	115,0	1.125
63	130,0	182,0	85-6	140,0	1.640
76	150,0	194,0	98-6	160,0	2.255
101	190,0	220,0	123-6	200,0	3.840



**CURVA 45° EL.
BEND 45° PE.
COUDE 45° BL.
CODO 45° EL.**

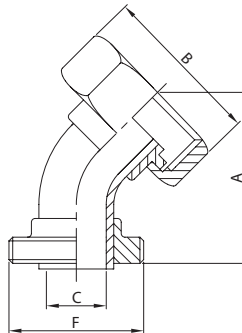
300 L



DN	A	C	D	R	gr
25	77,0	22,4	25,4	38,0	70
38	85,5	35,1	38,1	57,0	120
51	109,0	47,8	50,8	76,0	215
63	111,5	60,5	63,5	95,0	350
76	120,0	72,9	76,2	114,0	510
101	137,0	97,6	101,6	110,0	930

**CURVA 45° BF/BL. G. MT.
BEND 45° MP/L. N. ED.
COUDE 45° PF/PL. E. DN.
CODO 45° M./C. T. MD.**

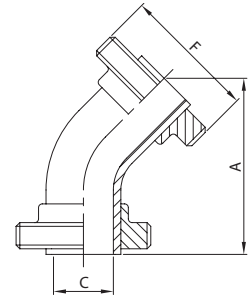
303 I



DN	A	B	C	F	gr
25	80,0	48,0	22,4	37-8	335
38	105,0	64,0	35,1	50-8	545
51	103,0	77,0	47,8	64-8	825
63	115,0	91,0	60,5	77-8	1.285
76	135,0	106,0	72,9	91-8	1.660
101	151,0	135,0	97,6	118-8	2.920

**CURVA 45° BF/BF. MT.
BEND 45° MP/MP. ED.
COUDE 45° PF/PF. DN.
CODO 45° M./M. MD.**

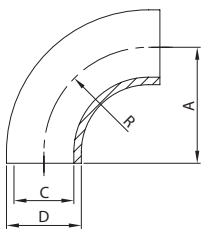
304 I



DN	A	C	F	gr
25	80,0	22,4	37-8	170
38	105,0	35,1	50-8	320
51	103,0	47,8	64-8	455
63	115,0	60,5	77-8	740
76	135,0	72,9	91-8	1.030
101	151,0	97,6	118-8	1.970

**CURVA 90° ES.
BEND 90° WE.
COUDE 90° BS.
CODO 90° ES.**

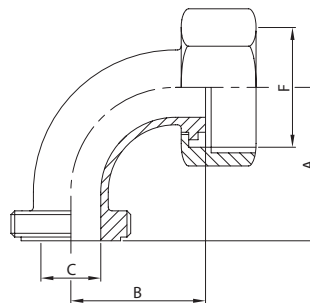
310 I



DN	A	C	D	R	gr
25	38,0	22,4	25,4	38,0	45
38	57,0	35,1	38,1	57,0	115
51	76,0	47,8	50,8	76,0	200
63	95,0	60,5	63,5	95,0	320
76	114,0	72,9	76,2	114,0	510
101	150,0	97,6	101,6	110,0	810

**CURVA 90° BF/BL. G. ST.
BEND 90° MP/L. N. WD.
COUDE 90° PF/PL. E. SD.
CODO 90° M./C. T. SD.**

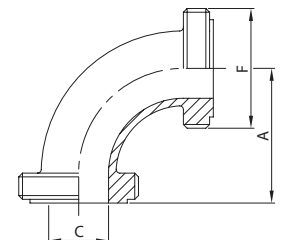
313 I



DN	A	B	C	F	gr
25	65,0	65,0	22,4	37-8	338
38	85,0	85,0	35,1	50-8	560
51	110,0	110,0	47,8	64-8	835
63	135,0	135,0	60,5	77-8	1.240
76	155,0	155,0	72,9	91-8	1.630
101	195,0	195,0	97,6	118-8	2.700

**CURVA 90° BF/BF. ST.
BEND 90° MP/MP. WD.
COUDE 90° PF/PF. SD.
CODO 90° M./M. SD.**

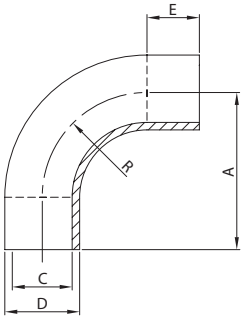
314 I



DN	A	C	F	gr
25	65,0	22,4	37-8	185
38	85,0	35,1	50-8	335
51	110,0	47,8	64-8	500
63	135,0	60,5	77-8	740
76	155,0	72,9	91-8	1.050
101	195,0	97,6	118-8	1.650

**CURVA 90° EM.
BEND 90° EE.
COUDE 90° BD.
CODO 90° EM.**

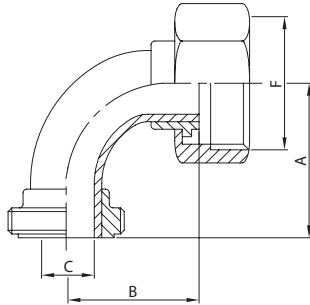
350 I



DN	A	C	D	E	R	gr
25	65,0	22,4	25,4	27,0	38,0	90
38	85,0	35,1	38,1	28,0	57,0	180
51	110,0	47,8	50,8	34,0	76,0	300
63	135,0	60,5	63,5	40,0	95,0	490
76	155,0	72,9	76,2	41,0	114,0	900
101	185,0	97,6	101,6	43,0	150,0	1.200

**CURVA 90° BF./BL. G. MT.
BEND 90° MP./L. N. ED.
COUDE 90° PF./PL. E. DN.
CODO 90° M./C. T. MD.**

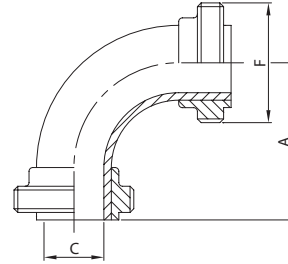
353 I



DN	A	B	C	F	gr
25	65,0	65,0	22,4	37-8	355
38	85,0	85,0	35,1	50-8	605
51	110,0	110,0	47,8	64-8	910
63	135,0	135,0	60,5	77-8	1.425
76	155,0	155,0	72,9	91-8	2.050
101	195,0	195,0	97,6	118-8	3.240

**CURVA 90° BF./BF. MT.
BEND 90° MP./MP. ED.
COUDE 90° PF./PF. DN.
CODO 90° M./M. MD.**

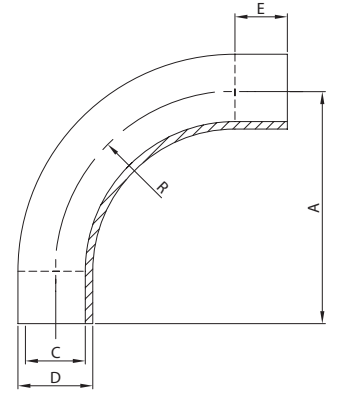
354 I



DN	A	C	F	gr
25	65,0	22,4	37-8	190
38	85,0	35,1	50-8	380
51	110,0	47,8	64-8	540
63	135,0	60,5	77-8	880
76	155,0	72,9	91-8	1.420
101	195,0	97,6	118-8	2.290

**CURVA 90° EM.
BEND 90° EE.
COUDE 90° BD.
CODO 90° EM.**

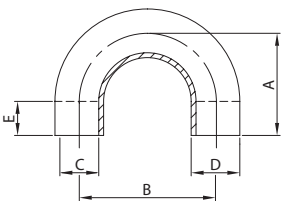
330 L



DN	A	C	D	E	R	gr
25	125,0	22,4	25,4	50,0	75,0	190
38	132,0	35,1	38,1	50,0	82,0	300
51	200,0	47,8	50,8	50,0	150,0	630
63	230,0	60,5	63,5	50,0	180,0	870
76	278,0	72,9	76,2	50,0	228,0	1.600
101	354,0	97,6	101,6	50,0	304,0	2.800

**CURVA 180° EL.
BEND 180° PE.
COUDE 180° BL.
CODO 180° EL.**

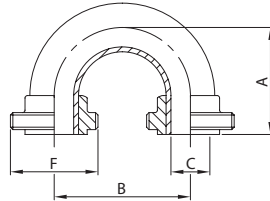
390 L



DN	A	B	C	D	E	gr
25	86,5	73,0	22,4	25,4	50,0	170
38	102,0	104,0	35,1	38,1	50,0	250
51	125,5	151,0	47,8	50,8	50,0	480
63	140,0	180,0	60,5	63,5	50,0	700
76	147,0	194,0	72,2	76,2	50,0	1.180
101	150,0	220,0	97,6	101,6	50,0	2.400

**CURVA 180° BF./BF. MT.
BEND 180° MP./MP. ED.
COUDE 180° PF./PF. DN.
CODO 180° M./M. MD.**

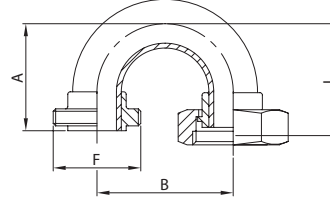
391 I



DN	A	B	C	F	gr
25	65,0	81,0	22,4	37-8	270
38	85,0	104,0	35,1	50-8	450
51	110,0	140,0	47,8	64-8	720
63	135,0	182,0	60,5	77-8	1.090
76	155,0	194,0	72,9	91-8	1.700
101	195,0	220,0	97,6	118-8	3.440

**CURVA 180° BF./BL. G. MT.
BEND 180° MP./L. N. ED.
COUDE 180° PF./PL. E. DN.
CODO 180° M./C. T. MD.**

393 I



DN	A	B	F	L	gr
25	65,0	81,0	37-8	65,0	435
38	85,0	104,0	50-8	85,0	675
51	110,0	140,0	64-8	110,0	1.090
63	135,0	182,0	77-8	135,0	1.635
76	155,0	194,0	91-8	155,0	2.330
101	195,0	220,0	118-8	195,0	4.390