



RIDUZIONI – TEE – CROCI

- Ricavati da tubi elettrouniti con sistema TIG, laminati a freddo e solubilizzati in atmosfera controllata.
- Calibrati internamente ed esternamente al fine di ottenere una buona circolarità.
- Intestati alle estremità per assicurare la perfetta ortogonalità dei piani.
- Riduzioni tornite sulle parti cilindriche in accordo con le tolleranze dimensionali prescritte dalle principali norme internazionali; l'uniformità degli spessori permette la saldatura orbitale.
- Produzione standard: riduzioni concentriche ed eccentriche, tee a saldare e mandrinare, tee ridotti, croci. A richiesta, disponibili corredati di raccordi mandrinati o saldati.
- Finitura standard: lucidatura esterna e satinatura interna grana 120 norme DIN; satinatura esterna e interna grana 120 norme SMS, BS, ISS. Altre finiture a richiesta.

REDUCERS – TEES – CROSSES

- Made from pipe electrojointed with the TIG method, cold-rolled and solution heat-treated in controlled atmosphere.
- Gauged inside and outside to obtain good roundness.
- Faced on the ends to ensure perfect right angles of planes.
- Reducers turned on the cylindrical parts in conformity with dimensional tolerance levels stipulated by the main international standards. Uniform wall thickness allows for orbital welding.
- Standard production: concentric and eccentric reducers, welding and expanding tees, reduced tees, crosses. On request available with expanded or welded unions.
- Standard finish: 120 grain external polishing and internal glazing to DIN standards; 120 grain external and internal glazing to SMS, BS and ISS standards. Other finishes on request.

RÉDUCTIONS – TÉS – CROIX

- Obtenus à partir de tubes électrosoudés avec le système TIG, laminés à froid et solubilisés en atmosphère contrôlée.
- Calibrés à l'intérieur et à l'extérieur afin d'obtenir une bonne circularité.
- Façonnés aux extrémités pour assurer l'orthogonalité parfaite des plans.
- Réductions usinées sur les parties cylindriques en respectant les tolérances dimensionnelles imposées par les principales normes internationales; l'uniformité des épaisseurs permet la soudure orbitale.
- Production standard: réductions concentriques et excentriques, tés à souder et à dudgeonner, tés réduits, croix. Sur demande, munis de raccords dudgeonnés ou soudés.
- Finissage standard: polissage extérieur et satinage intérieur grain 120 normes DIN; satinage extérieur et intérieur grain 120 normes SMS, BS, ISS. Autres finissages sur demande.

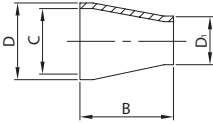
REDUCCIONES – TES – CRUCES

- Obtenidas a partir de tubos unidos eléctricamente mediante el sistema TIG, laminados en frío y solubilizados en atmósfera controlada.
- Calibradas interior y exteriormente con la finalidad de obtener una forma circular perfecta.
- Trabajadas en los extremos para asegurar que las superficies sean perfectamente ortogonales.
- Reducciones torneadas en las partes cilíndricas de acuerdo a las tolerancias de las dimensiones prescritas por las principales normas internacionales; el espesor de pared uniforme permite la soldadura orbital.
- Producción estándar: reducciones concéntricas y excéntricas, tes a soldar y mandrilar, tes reducidas, cruces. A pedido, se pueden equipar con racores mandrilados o soldados.
- Acabado estándar: pulido exterior y satinado interior grano 120 normas DIN; satinado exterior e interior grano 120 normas SMS, BS, ISS. A pedido, se pueden suministrar otros acabados.



RIDUZIONE CONC. SR.
WG. CONC. REDUCER
RÉDUCTION CONC. SR.
REDUCCIÓN CONC. SR.

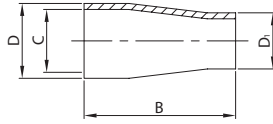
169 L



DN	B	C	D	D ₁	gr
18/12	38,0	15,5	18,0	12,0	30
22/12	38,0	19,5	22,0	12,0	40
22/18	38,0	19,5	22,0	18,0	40
28/12	38,0	25,0	28,0	12,0	50
28/18	38,0	25,0	28,0	18,0	50
28/22	38,0	25,0	28,0	22,0	50
34/28	67,0	31,0	34,0	28,0	60
40/28	67,0	37,0	40,0	28,0	60
40/34	67,0	37,0	40,0	34,0	60
52/28	67,0	49,0	52,0	28,0	100
52/34	67,0	49,0	52,0	34,0	100
52/40	67,0	49,0	52,0	40,0	110
70/40	67,0	66,0	70,0	40,0	120
70/52	67,0	66,0	70,0	52,0	160
85/40	88,0	81,0	85,0	40,0	180
85/52	67,0	81,0	85,0	52,0	190
85/70	67,0	81,0	85,0	70,0	240
101/52	105,0	97,6	101,6	52,0	300
101/70	72,0	97,6	101,6	70,0	290
101/85	67,0	97,6	101,6	85,0	280
104/52	107,0	100,0	104,0	52,0	300
104/70	72,0	100,0	104,0	70,0	290
104/85	67,0	100,0	104,0	85,0	280

RIDUZIONE CONC. EL.
CONC. REDUCER PE.
RÉDUCTION CONC. BL.
REDUCCIÓN CONC. EL.

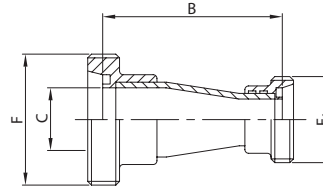
170 L



DN	B	C	D	D ₁	gr
18/12	67,0	15,5	18,0	12,0	30
22/12	67,0	19,5	22,0	12,0	40
22/18	67,0	19,5	22,0	18,0	40
28/12	67,0	25,0	28,0	12,0	50
28/18	67,0	25,0	28,0	18,0	50
28/22	67,0	25,0	28,0	22,0	50
34/12	67,0	31,0	34,0	12,0	80
34/18	67,0	31,0	34,0	18,0	80
34/22	98,0	31,0	34,0	22,0	90
34/28	88,0	31,0	34,0	28,0	90
40/12	67,0	37,0	40,0	12,0	100
40/18	67,0	37,0	40,0	18,0	110
40/22	105,0	37,0	40,0	22,0	110
40/28	98,0	37,0	40,0	28,0	120
40/34	88,0	37,0	40,0	34,0	120
52/28	134,0	49,0	52,0	28,0	155
52/34	105,0	49,0	52,0	34,0	210
52/40	98,0	49,0	52,0	40,0	180
70/34	120,0	66,0	70,0	34,0	220
70/40	120,0	66,0	70,0	40,0	220
70/52	105,0	66,0	70,0	52,0	270
85/40	147,0	81,0	85,0	40,0	440
85/52	125,0	81,0	85,0	52,0	430
85/70	105,0	81,0	85,0	70,0	500
101/52	155,0	97,6	101,6	52,0	560
101/70	127,0	97,6	101,6	70,0	550
101/85	120,0	97,6	101,6	85,0	550
104/52	165,0	100,0	104,0	52,0	530
104/70	127,0	100,0	104,0	70,0	525
104/85	120,0	100,0	104,0	85,0	550

RID. CONC. BF./BF. MT.
CONC. RED. MP./MP. ED.
RÉD. CONC. PF./PF. DN.
RED. CONC. M./M. MD.

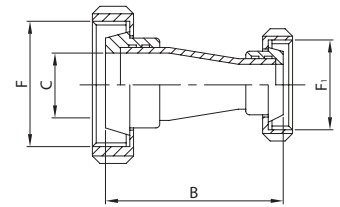
171 D



DN	B	C	F	F ₁	gr
32/25	94,0	31,0	58-6	52-6	390
40/25	115,0	37,0	65-6	52-6	460
40/32	101,0	37,0	65-6	58-6	500
50/25	128,0	49,0	78-6	52-6	570
50/32	142,0	49,0	78-6	58-6	660
50/40	125,0	49,0	78-6	65-6	670
65/40	130,0	66,0	95-6	65-6	810
65/50	148,0	66,0	95-6	78-6	930
80/65	136,0	81,0	110-4	95-6	1.410
100/80	138,0	97,6	130-4	110-4	2.150
104/80	138,0	100,0	130-4	110-4	2.150

RID. CONC. BC.G./BC.G. MT.
CONC. RED. TP.N./TP.N. ED.
RÉD. CONC. PC.E./PC.E. DN.
RED. CONC. C. T./C. T. MD.

172 D



DN	B	C	F	F ₁	gr
32/25	94,0	31,0	58-6	52-6	635
40/25	115,0	37,0	65-6	52-6	740
40/32	101,0	37,0	65-6	58-6	795
50/25	128,0	49,0	78-6	52-6	920
50/32	142,0	49,0	78-6	58-6	1.030
50/40	125,0	49,0	78-6	65-6	1.075
65/40	130,0	66,0	95-6	65-6	1.430
65/50	148,0	66,0	95-6	78-6	1.545
80/65	136,0	81,0	110-4	95-6	2.415
100/80	138,0	97,6	130-4	110-4	3.470
104/80	138,0	100,0	130-4	110-4	3.470



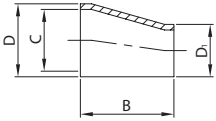
RIDUZIONE ECC. SR.
WG. ECC. REDUCER
RÉDUCTION EXC. SR.
REDUCCIÓN EXC. SR.

RIDUZIONE ECC. EL.
ECC. REDUCER PE.
RÉDUCTION EXC. BL.
REDUCCIÓN EXC. EL.

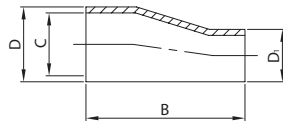
RID. ECC. BF/BF. MT.
ECC. RED. MP/MP. ED.
RÉD. EXC. PF/PF. DN.
RED. EXC. M./M. MD.

RID. ECC. BC. G./BC. G. MT.
ECC. RED. TP. N./TP. N. ED.
RÉD. EXC. PC. E./PC. E. DN.
RED. EXC. C. T./C. T. MD.

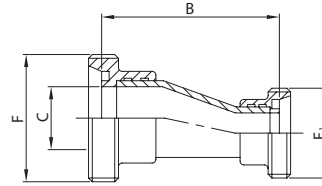
179 L



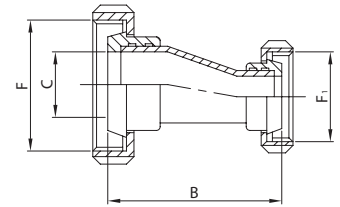
180 L



181 D



182 D



DN	B	C	D	D ₁	gr
34/28	67,0	31,0	34,0	28,0	60
40/28	67,0	37,0	40,0	28,0	60
40/34	67,0	37,0	40,0	34,0	60
52/28	68,0	49,0	52,0	28,0	100
52/34	67,0	49,0	52,0	34,0	100
52/40	67,0	49,0	52,0	40,0	110
70/40	71,0	66,0	70,0	40,0	120
70/52	67,0	66,0	70,0	52,0	160
85/52	79,0	81,0	85,0	52,0	190
85/70	67,0	81,0	85,0	70,0	240
101/52	110,0	97,6	101,6	52,0	300
101/70	67,0	97,6	101,6	70,0	290
101/85	67,0	97,6	101,6	85,0	280
104/52	110,0	100,0	104,0	52,0	300
104/70	67,0	100,0	104,0	70,0	290
104/85	67,0	100,0	104,0	85,0	280

DN	B	C	D	D ₁	gr
34/28	102,0	31,0	34,0	28,0	120
40/28	110,0	37,0	40,0	28,0	120
40/34	102,0	37,0	40,0	34,0	130
52/28	130,0	49,0	52,0	28,0	160
52/34	120,0	49,0	52,0	34,0	200
52/40	110,0	49,0	52,0	40,0	160
70/40	153,0	66,0	70,0	40,0	230
70/52	130,0	66,0	70,0	52,0	240
85/52	146,0	81,0	85,0	52,0	430
85/70	120,0	81,0	85,0	70,0	500
101/52	150,0	97,6	101,6	52,0	560
101/70	153,0	97,6	101,6	70,0	550
101/85	118,0	97,6	101,6	85,0	550
104/52	148,0	100,0	104,0	52,0	530
104/70	153,0	100,0	104,0	70,0	525
104/85	118,0	100,0	104,0	85,0	550

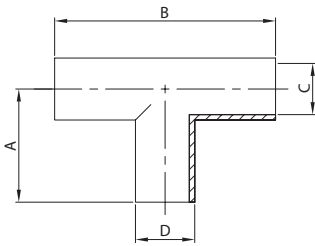
DN	B	C	F	F ₁	gr
32/25	116,0	31,0	58-6	52-6	422
40/25	123,0	37,0	65-6	52-6	462
40/32	115,0	37,0	65-6	58-6	510
50/25	143,0	49,0	78-6	52-6	572
50/32	133,0	49,0	78-6	58-6	650
50/40	122,0	49,0	78-6	65-6	670
65/40	166,0	66,0	95-6	65-6	875
65/50	143,0	66,0	95-6	78-6	900
80/65	136,0	81,0	110-4	95-6	1.410
100/80	136,0	97,6	130-4	110-4	2.180
104/80	136,0	100,0	130-4	110-4	2.180

DN	B	C	F	F ₁	gr
32/25	116,0	31,0	58-6	52-6	665
40/25	123,0	37,0	65-6	52-6	740
40/32	115,0	37,0	65-6	58-6	805
50/25	143,0	49,0	78-6	52-6	925
50/32	133,0	49,0	78-6	58-6	1.020
50/40	122,0	49,0	78-6	65-6	1.055
65/40	166,0	66,0	95-6	65-6	1.400
65/50	143,0	66,0	95-6	78-6	1.595
80/65	136,0	81,0	110-4	95-6	2.415
100/80	136,0	97,6	130-4	110-4	3.500
104/80	136,0	100,0	130-4	110-4	3.500



TEE A MANDRINARE
EXPANDING TEE
TÉ À DUDGEONNER
TE MANDRILAR

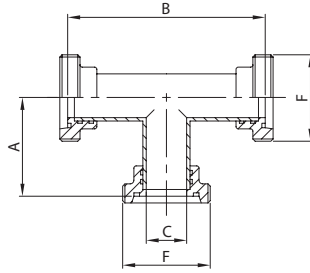
200 D



DN	A	B	C	D	gr
10	26,0	52,0	10,0	12,0	35
15	35,0	70,0	16,0	18,0	75
20	40,0	80,0	20,0	22,0	95
25	50,0	100,0	25,0	28,0	120
32	55,0	110,0	31,0	34,0	175
40	60,0	120,0	37,0	40,0	240
50	70,0	140,0	49,0	52,0	310
65	80,0	160,0	66,0	70,0	650
80	90,0	180,0	81,0	85,0	1.070
100	100,0	200,0	97,6	101,6	1.850
104	100,0	200,0	100,0	104,0	1.850
125	124,0	248,0	125,0	129,0	2.250

TEE BF/BF/BF. MT.
TEE MP/MP/MP. ED.
TÉ PF/PF/PF. DN.
TE M./M./M. MD.

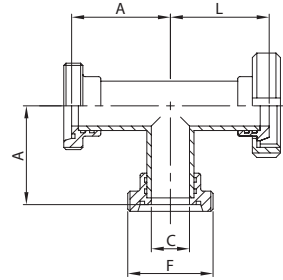
201 D



DN	A	B	C	F	gr
25	57,0	114,0	25,0	52-6	515
32	62,0	124,0	31,0	58-6	685
40	66,0	132,0	37,0	65-6	870
50	76,0	152,0	49,0	78-6	1.150
65	87,0	174,0	66,0	95-6	1.790
80	99,0	198,0	81,0	110-4	2.870
100	109,0	218,0	97,6	130-4	4.850
104	109,0	218,0	100,0	130-4	4.850

TEE BF/BF/BC. G. MT.
TEE MP/MP/TR. N. ED.
TÉ PF/PF/PC. E. DN.
TE M./M./C. T. MD.

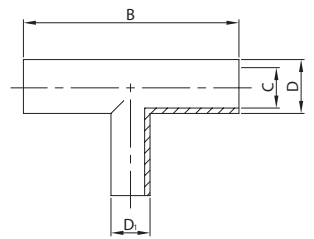
203 D



DN	A	C	F	L	gr
25	57,0	25,0	52-6	57,0	630
32	62,0	31,0	58-6	62,0	815
40	66,0	37,0	65-6	66,0	1.035
50	76,0	49,0	78-6	76,0	1.390
65	87,0	66,0	95-6	87,0	2.245
80	99,0	81,0	110-4	99,0	3.420
100	109,0	97,6	130-4	109,0	5.620
104	109,0	100,0	130-4	109,0	5.620

TEE RIDOTTO EL.
REDUCING TEE PE.
TÉ RÉDUIT BL.
TE REDUCIDA EL.

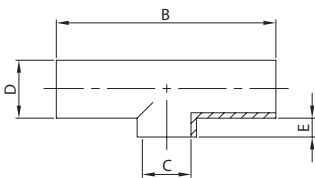
220 D



DN	B	C	D	D ₁	gr
32/25	110,0	31,0	34,0	28,0	175
40/25	120,0	37,0	40,0	28,0	240
40/32	120,0	37,0	40,0	34,0	240
50/25	140,0	49,0	52,0	28,0	310
50/32	140,0	49,0	52,0	34,0	310
50/40	140,0	49,0	52,0	40,0	310
65/40	160,0	66,0	70,0	40,0	650
65/50	160,0	66,0	70,0	52,0	650
80/65	180,0	81,0	85,0	70,0	1.070
100/80	200,0	97,6	101,6	85,0	1.850
104/80	200,0	100,0	104,0	85,0	1.850

TEE A SALDARE
WELDING TEE
TÉ À SOUDER
TE SOLDAR

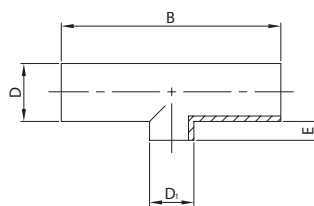
240 D



DN	B	C	D	E	gr
10	52,0	10,0	12,0	3,0	35
15	70,0	16,0	18,0	3,0	75
20	80,0	20,0	22,0	3,0	95
25	100,0	25,0	28,0	3,0	120
32	110,0	31,0	34,0	3,0	175
40	120,0	37,0	40,0	3,0	240
50	140,0	49,0	52,0	3,0	310
65	160,0	66,0	70,0	3,0	650
80	180,0	81,0	85,0	3,0	1.070
100	200,0	97,6	101,6	3,0	1.850
104	200,0	100,0	104,0	3,0	1.850
125	248,0	125,0	129,0	9,5	2.000

TEE RIDOTTO SR.
REDUCING TEE WG.
TÉ RÉDUIT SR.
TE REDUCIDA SR.

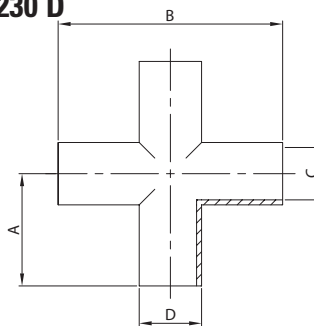
250 D



DN	B	D	D ₁	E	gr
32/25	110,0	34,0	28,0	3,0	175
40/25	120,0	40,0	28,0	3,0	240
40/32	120,0	40,0	34,0	3,0	240
50/25	140,0	52,0	28,0	3,0	310
50/32	140,0	52,0	34,0	3,0	310
50/40	140,0	52,0	40,0	3,0	310
65/40	160,0	70,0	40,0	3,0	650
65/50	160,0	70,0	52,0	3,0	650
80/65	180,0	85,0	70,0	3,0	1.070
100/80	200,0	101,6	85,0	3,0	1.850
104/80	200,0	104,0	85,0	3,0	1.850

CROCE A MANDRINARE
EXPANDING CROSS
CROIX À DUDGEONNER
CRUZ MANDRILAR

230 D



DN	A	B	C	D	gr
10	26,0	52,0	10,0	12,0	50
15	35,0	70,0	16,0	18,0	100
20	40,0	80,0	20,0	22,0	130
25	50,0	100,0	25,0	28,0	160
32	55,0	110,0	31,0	34,0	240
40	60,0	120,0	37,0	40,0	320
50	70,0	140,0	49,0	52,0	420
65	80,0	160,0	66,0	70,0	870
80	90,0	180,0	81,0	85,0	1.430
100	100,0	200,0	97,6	101,6	2.470
104	100,0	200,0	100,0	104,0	2.470



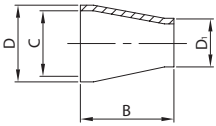
RIDUZIONE CONC. SR.
WG. CONC. REDUCER
RÉDUCTION CONC. SR.
REDUCCIÓN CONC. SR.

RIDUZIONE CONC. EL.
CONC. REDUCER PE.
RÉDUCTION CONC. BL.
REDUCCIÓN CONC. EL.

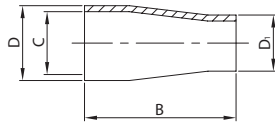
RID. CONC. BF/BF. MT.
CONC. RED. MP/MP. ED.
RÉD. CONC. PF/PF. DN.
RED. CONC. M./M. MD.

RID. CONC. BL.G./BL.G. MT.
CONC. RED. L.N./L.N. ED.
RÉD. CONC. PL.E./PL.E. DN.
RED. CONC. C.T./C.T. MD.

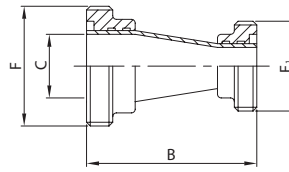
169 L



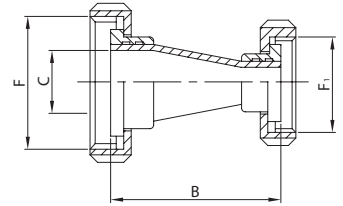
170 L



171 S



172 S



DN	B	C	D	D ₁	gr
38/25	67,0	35,1	38,1	25,4	80
51/25	67,0	47,8	50,8	25,4	100
51/38	67,0	47,8	50,8	38,1	100
63/38	67,0	60,2	63,5	38,1	140
63/51	67,0	60,2	63,5	50,8	160
76/38	67,0	72,9	76,2	38,1	160
76/51	67,0	72,9	76,2	50,8	180
76/63	67,0	72,9	76,2	63,5	220
101/51	107,0	97,6	101,6	50,8	310
101/63	82,0	97,6	101,6	63,5	300
101/76	67,0	97,6	101,6	76,2	280
104/51	109,0	100,0	104,0	50,8	310
104/63	89,0	100,0	104,0	63,5	300
104/76	67,0	100,0	104,0	76,2	280

DN	B	C	D	D ₁	gr
38/25	97,0	35,1	38,1	25,4	110
51/25	115,0	47,8	50,8	25,4	170
51/38	97,0	47,8	50,8	38,1	150
63/38	115,0	60,2	63,5	38,1	230
63/51	97,0	60,2	63,5	50,8	190
76/38	132,0	72,9	76,2	38,1	300
76/51	115,0	72,9	76,2	50,8	260
76/63	97,0	72,9	76,2	63,5	240
101/51	145,0	97,6	101,6	50,8	590
101/63	120,0	97,6	101,6	63,5	580
101/76	120,0	97,6	101,6	76,2	580
104/51	155,0	100,0	104,0	50,8	600
104/63	140,0	100,0	104,0	63,5	590
104/76	127,0	100,0	104,0	76,2	580

DN	B	C	F	F ₁	gr
38/25	97,0	35,1	60-6	40-6	380
51/25	115,0	47,8	70-6	40-6	465
51/38	97,0	47,8	70-6	60-6	575
63/38	115,0	60,5	85-6	60-6	820
63/51	97,0	60,5	85-6	70-6	805
76/38	132,0	72,9	98-6	60-6	1.000
76/51	115,0	72,9	98-6	70-6	985
76/63	97,0	72,9	98-6	85-6	1.130
101/63	120,0	97,6	132-6	85-6	2.120
101/76	120,0	97,6	132-6	98-6	2.220
104/76	120,0	100,0	125-4	98-6	2.220

DN	B	C	F	F ₁	gr
38/25	97,0	35,1	60-6	40-6	655
51/25	115,0	47,8	70-6	40-6	760
51/38	97,0	47,8	70-6	60-6	975
63/38	115,0	60,5	85-6	60-6	1.330
63/51	97,0	60,5	85-6	70-6	1.335
76/38	132,0	72,9	98-6	60-6	1.640
76/51	115,0	72,9	98-6	70-6	1.645
76/63	97,0	72,9	98-6	85-6	1.900
101/63	120,0	97,6	132-6	85-6	3.020
101/76	120,0	97,6	132-6	98-6	3.025
104/76	120,0	100,0	125-4	98-6	3.025

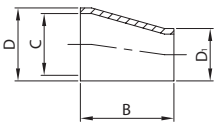
RIDUZIONE ECC. SR.
WG. ECC. REDUCER
RÉDUCTION EXC. SR.
REDUCCIÓN EXC. SR.

RIDUZIONE ECC. EL.
ECC. REDUCER PE.
RÉDUCTION EXC. BL.
REDUCCIÓN EXC. EL.

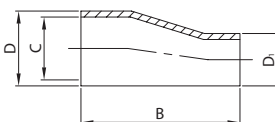
RID. ECC. BF/BF. MT.
ECC. RED. MP/MP. ED.
RÉD. EXC. PF/PF. DN.
RED. EXC. M./M. MD.

RID. ECC. BL.G./BL.G. MT.
ECC. RED. L.N./L.N. ED.
RÉD. EXC. PL.E./PL.E. DN.
RED. EXC. C.T./C.T. MD.

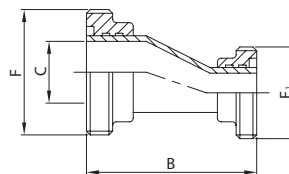
179 L



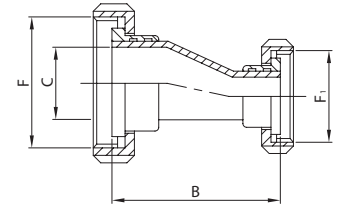
180 L



181 S



182 S



DN	B	C	D	D ₁	gr
38/25	67,0	35,1	38,1	25,4	80
51/25	73,0	47,8	50,8	25,4	100
51/38	67,0	47,8	50,8	38,1	100
63/38	71,0	60,2	63,5	38,1	140
63/51	67,0	60,2	63,5	50,8	160
76/38	80,0	72,9	76,2	38,1	160
76/51	67,0	72,9	76,2	50,8	180
76/63	67,0	72,9	76,2	63,5	220
101/51	110,0	97,6	101,6	50,8	310
101/63	88,0	97,6	101,6	63,5	300
101/76	67,0	97,6	101,6	76,2	280
104/51	115,0	100,0	104,0	50,8	310
104/63	88,0	100,0	104,0	63,5	300
104/76	67,0	100,0	104,0	76,2	280

DN	B	C	D	D ₁	gr
38/25	104,0	35,1	38,1	25,4	125
51/25	120,0	47,8	50,8	25,4	170
51/38	105,0	47,8	50,8	38,1	160
63/38	130,0	60,2	63,5	38,1	200
63/51	103,0	60,2	63,5	50,8	220
76/38	139,0	72,9	76,2	38,1	300
76/51	126,0	72,9	76,2	50,8	280
76/63	105,0	72,9	76,2	63,5	250
101/51	150,0	97,6	101,6	50,8	590
101/63	143,0	97,6	101,6	63,5	670
101/76	128,0	97,6	101,6	76,2	630
104/51	148,0	100,0	104,0	50,8	600
104/63	145,0	100,0	104,0	63,5	590
104/76	128,0	100,0	104,0	76,2	630

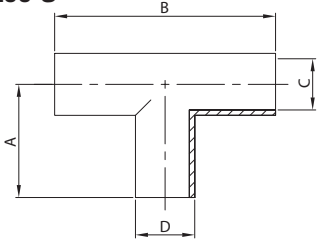
DN	B	C	F	F ₁	gr
38/25	104,0	35,1	60-6	40-6	395
51/25	126,0	47,8	70-6	40-6	465
51/38	105,0	47,8	70-6	60-6	585
63/38	130,0	60,5	85-6	60-6	790
63/51	103,0	60,5	85-6	70-6	835
76/38	148,0	72,9	98-6	60-6	1.020
76/51	126,0	72,9	98-6	70-6	1.000
76/63	105,0	72,9	98-6	85-6	1.140
101/63	143,0	97,6	132-6	85-6	2.200
101/76	128,0	97,6	132-6	98-6	2.270
104/76	128,0	100,0	125-4	98-6	2.270

DN	B	C	F	F ₁	gr
38/25	104,0	35,1	60-6	40-6	670
51/25	126,0	47,8	70-6	40-6	760
51/38	105,0	47,8	70-6	60-6	985
63/38	130,0	60,5	85-6	60-6	1.300
63/51	103,0	60,5	85-6	70-6	1.365
76/38	148,0	72,9	98-6	60-6	1.660
76/51	126,0	72,9	98-6	70-6	1.665
76/63	105,0	72,9	98-6	85-6	1.910
101/63	143,0	97,6	132-6	85-6	3.100
101/76	128,0	97,6	132-6	98-6	3.300
104/76	128,0	100,0	125-4	98-6	3.300



TEE A MANDRINARE
EXPANDING TEE
TÉ À DUDGEONNER
TE MANDRILAR

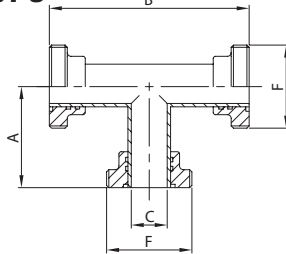
200 S



DN	A	B	C	D	gr
25	55,0	110,0	22,4	25,4	190
38	70,0	140,0	35,1	38,1	320
51	82,0	164,0	47,8	50,8	470
63	105,0	210,0	60,5	63,5	680
76	110,0	220,0	72,9	76,2	1.030
101	150,0	300,0	97,6	101,6	1.850
104	150,0	300,0	100,0	104,0	1.850

TEE BF/BF/BF. MT.
TEE MP/MP/MP. ED.
TÉ PF/PF/PF. DN.
TE M./M./M. MD.

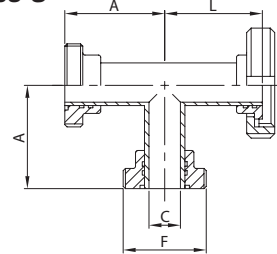
201 S



DN	A	B	C	F	gr
25	55,0	110,0	22,4	40-6	400
38	70,0	140,0	35,1	60-6	920
51	82,0	164,0	47,8	70-6	1.145
63	105,0	210,0	60,5	85-6	1.850
76	110,0	220,0	72,9	98-6	2.530
101	150,0	300,0	97,6	132-6	5.270
104	150,0	300,0	100,0	125-4	5.270

TEE BF/BF/BL. G. MT.
TEE MP/MP/L. N. ED.
TÉ PF/PF/PL. E. DN.
TE M./M./C. T. MD.

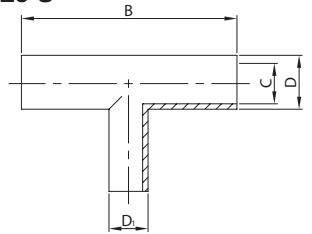
203 S



DN	A	C	F	L	gr
25	55,0	22,4	40-6	55,0	485
38	70,0	35,1	60-6	70,0	1.110
51	82,0	47,8	70-6	82,0	1.355
63	105,0	60,5	85-6	105,0	2.170
76	110,0	72,9	98-6	110,0	2.980
101	150,0	97,6	132-6	150,0	5.850
104	150,0	100,0	125-4	150,0	5.850

TEE RIDOTTO EL.
REDUCING TEE PE.
TÉ RÉDUIT BL.
TE REDUCIDA EL.

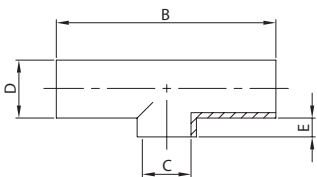
220 S



DN	B	C	D	D ₁	gr
38/25	140,0	35,1	38,1	25,4	320
51/25	164,0	47,8	50,8	25,4	470
51/38	164,0	47,8	50,8	38,1	470
63/38	210,0	60,5	63,5	38,1	680
63/51	210,0	60,5	63,5	50,8	680
76/38	220,0	72,9	76,2	38,1	1.030
76/51	220,0	72,9	76,2	50,8	1.030
76/63	220,0	72,9	76,2	63,5	1.030
101/63	300,0	97,6	101,6	63,5	1.850
101/76	300,0	97,6	101,6	76,2	1.850
104/76	300,0	100,0	104,0	76,2	1.850

TEE A SILDARE
WELDING TEE
TÉ À SOUDER
TE SOLDAR

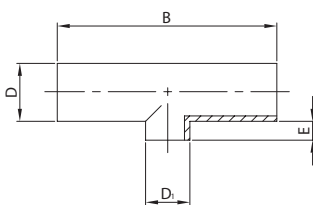
240 S



DN	B	C	D	E	gr
25	110,0	22,4	25,4	3,0	190
38	140,0	35,1	38,1	3,0	320
51	164,0	47,8	50,8	3,0	470
63	210,0	60,5	63,5	3,0	680
76	220,0	72,9	76,2	3,0	1.030
101	300,0	97,6	101,6	3,0	1.850
104	300,0	100,0	104,0	3,0	1.850

TEE RIDOTTO SR.
REDUCING TEE WG.
TÉ RÉDUIT SR.
TE REDUCIDA SR.

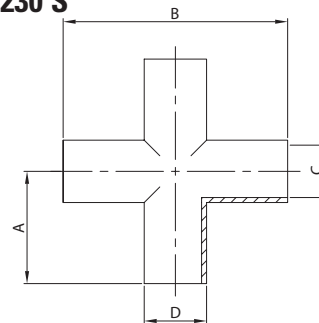
250 S



DN	B	D	D ₁	E	gr
38/25	140,0	38,1	25,4	3,0	320
51/25	164,0	50,8	25,4	3,0	470
51/38	164,0	50,8	38,1	3,0	470
63/38	210,0	63,5	38,1	3,0	680
63/51	210,0	63,5	50,8	3,0	680
76/38	220,0	76,2	38,1	3,0	1.030
76/51	220,0	76,2	50,8	3,0	1.030
76/63	220,0	76,2	63,5	3,0	1.030
101/63	300,0	101,6	63,5	3,0	1.850
101/76	300,0	101,6	76,2	3,0	1.850
104/76	300,0	104,0	76,2	3,0	1.850

CROCE A MANDRINARE
EXPANDING CROSS
CROIX À DUDGEONNER
CRUZ MANDRILAR

230 S



DN	A	B	C	D	gr
25	55,0	110,0	22,4	25,4	253
38	70,0	140,0	35,1	38,1	428
51	82,0	164,0	47,8	50,8	628
63	105,0	210,0	60,5	63,5	908
76	110,0	220,0	72,9	76,2	1.376
101	150,0	300,0	97,6	101,6	2.500
104	150,0	300,0	100,0	104,0	2.500



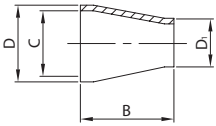
RIDUZIONE CONC. SR.
WG. CONC. REDUCER
RÉDUCTION CONC. SR.
REDUCCIÓN CONC. SR.

RIDUZIONE CONC. EL.
CONC. REDUCER PE.
RÉDUCTION CONC. BL.
REDUCCIÓN CONC. EL.

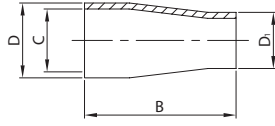
RID. CONC. BF/BF. MT.
CONC. RED. MP/MP. ED.
RÉD. CONC. PF/PF. DN.
RED. CONC. M./M. MD.

RID. CONC. BL.G./BL.G. MT.
CONC. RED. L.N./L.N. ED.
RÉD. CONC. PL.E./PL.E. DN.
RED. CONC. C.T./C.T. MD.

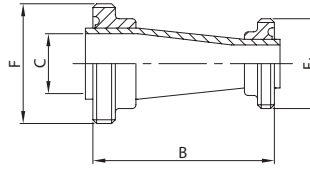
169 L



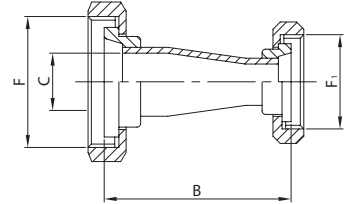
170 L



171 B



172 B



DN	B	C	D	D ₁	gr
38/25	67,0	35,1	38,1	25,4	80
51/25	67,0	47,8	50,8	25,4	100
51/38	67,0	47,8	50,8	38,1	100
63/38	67,0	60,2	63,5	38,1	140
63/51	67,0	60,2	63,5	50,8	160
76/38	67,0	72,9	76,2	38,1	160
76/51	67,0	72,9	76,2	50,8	180
76/63	67,0	72,9	76,2	63,5	220
101/51	107,0	97,6	101,6	50,8	310
101/63	82,0	97,6	101,6	63,5	300
101/76	67,0	97,6	101,6	76,2	280
104/51	109,0	100,0	104,0	50,8	310
104/63	89,0	100,0	104,0	63,5	300
104/76	67,0	100,0	104,0	76,2	280

DN	B	C	D	D ₁	gr
38/25	97,0	35,1	38,1	25,4	110
51/25	115,0	47,8	50,8	25,4	170
51/38	97,0	47,8	50,8	38,1	150
63/38	115,0	60,2	63,5	38,1	230
63/51	97,0	60,2	63,5	50,8	190
76/38	132,0	72,9	76,2	38,1	300
76/51	115,0	72,9	76,2	50,8	260
76/63	97,0	72,9	76,2	63,5	240
101/51	145,0	97,6	101,6	50,8	590
101/63	120,0	97,6	101,6	63,5	580
101/76	120,0	97,6	101,6	76,2	580
104/51	155,0	100,0	104,0	50,8	600
104/63	140,0	100,0	104,0	63,5	590
104/76	127,0	100,0	104,0	76,2	580

DN	B	C	F	F ₁	gr
38/25	87,0	35,1	58-8	46-8	365
51/25	105,0	47,8	73-6	46-8	505
51/38	87,0	47,8	73-6	58-6	540
63/38	105,0	60,5	85-6	58-6	675
63/51	87,0	60,5	85-6	73-6	715
76/38	122,0	72,9	98-6	58-6	820
76/51	105,0	72,9	98-6	73-6	860
76/63	87,0	72,9	98-6	85-6	895
101/63	110,0	97,6	123-6	85-6	1.410
101/76	110,0	97,6	123-6	98-6	1.475

DN	B	C	F	F ₁	gr
38/25	107,0	35,1	58-8	46-8	590
51/25	125,0	47,8	73-6	46-8	765
51/38	107,0	47,8	73-6	58-6	855
63/38	125,0	60,5	85-6	58-6	1.175
63/51	107,0	60,5	85-6	73-6	1.250
76/38	142,0	72,9	98-6	58-6	1.305
76/51	125,0	72,9	98-6	73-6	1.380
76/63	107,0	72,9	98-6	85-6	1.600
101/63	130,0	97,6	123-6	85-6	2.150
101/76	130,0	97,6	123-6	98-6	2.200

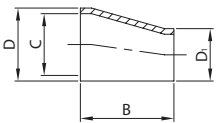
RIDUZIONE ECC. SR.
WG. ECC. REDUCER
RÉDUCTION EXC. SR.
REDUCCIÓN EXC. SR.

RIDUZIONE ECC. EL.
ECC. REDUCER PE.
RÉDUCTION EXC. BL.
REDUCCIÓN EXC. EL.

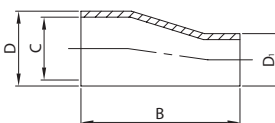
RID. ECC. BF/BF. MT.
ECC. RED. MP/MP. ED.
RÉD. EXC. PF/PF. DN.
RED. EXC. M./M. MD.

RID. ECC. BL.G./BL.G. MT.
ECC. RED. L.N./L.N. ED.
RÉD. EXC. PL.E./PL.E. DN.
RED. EXC. C.T./C.T. MD.

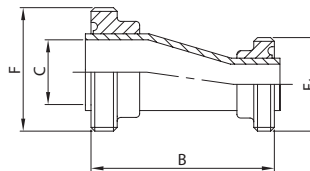
179 L



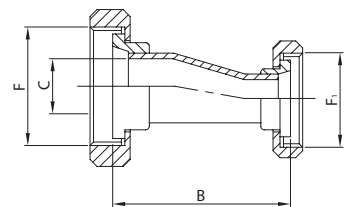
180 L



181 B



182 B



DN	B	C	D	D ₁	gr
38/25	67,0	35,1	38,1	25,4	80
51/25	73,0	47,8	50,8	25,4	100
51/38	67,0	47,8	50,8	38,1	100
63/38	71,0	60,2	63,5	38,1	140
63/51	67,0	60,2	63,5	50,8	160
76/38	80,0	72,9	76,2	38,1	160
76/51	67,0	72,9	76,2	50,8	180
76/63	67,0	72,9	76,2	63,5	220
101/51	110,0	97,6	101,6	50,8	310
101/63	88,0	97,6	101,6	63,5	300
101/76	67,0	97,6	101,6	76,2	280
104/51	115,0	100,0	104,0	50,8	310
104/63	88,0	100,0	104,0	63,5	300
104/76	67,0	100,0	104,0	76,2	280

DN	B	C	D	D ₁	gr
38/25	104,0	35,1	38,1	25,4	125
51/25	120,0	47,8	50,8	25,4	170
51/38	105,0	47,8	50,8	38,1	160
63/38	130,0	60,2	63,5	38,1	200
63/51	103,0	60,2	63,5	50,8	220
76/38	139,0	72,9	76,2	38,1	300
76/51	126,0	72,9	76,2	50,8	280
76/63	105,0	72,9	76,2	63,5	250
101/51	150,0	97,6	101,6	50,8	590
101/63	143,0	97,6	101,6	63,5	670
101/76	128,0	97,6	101,6	76,2	630
104/51	148,0	100,0	104,0	50,8	600
104/63	145,0	100,0	104,0	63,5	590
104/76	128,0	100,0	104,0	76,2	630

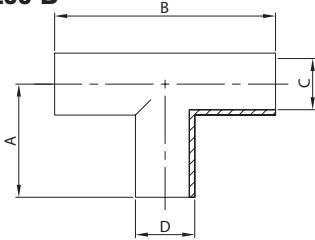
DN	B	C	F	F ₁	gr
38/25	94,0	35,1	58-8	46-8	380
51/25	116,0	47,8	73-6	46-8	505
51/38	95,0	47,8	73-6	58-6	550
63/38	120,0	60,5	85-6	58-6	645
63/51	93,0	60,5	85-6	73-6	745
76/38	138,0	72,9	98-6	58-6	840
76/51	116,0	72,9	98-6	73-6	880
76/63	95,0	72,9	98-6	85-6	905
101/63	133,0	97,6	123-6	85-6	1.490
101/76	118,0	97,6	123-6	98-6	1.525

DN	B	C	F	F ₁	gr
38/25	114,0	35,1	58-8	46-8	605
51/25	136,0	47,8	73-6	46-8	765
51/38	115,0	47,8	73-6	58-6	865
63/38	140,0	60,5	85-6	58-6	1.145
63/51	113,0	60,5	85-6	73-6	1.280
76/38	158,0	72,9	98-6	58-6	1.325
76/51	136,0	72,9	98-6	73-6	1.400
76/63	115,0	72,9	98-6	85-6	1.610
101/63	153,0	97,6	123-6	85-6	2.230
101/76	138,0	97,6	123-6	98-6	2.250



TEE A MANDRINARE
EXPANDING TEE
TÉ À DUDGEONNER
TE MANDRILAR

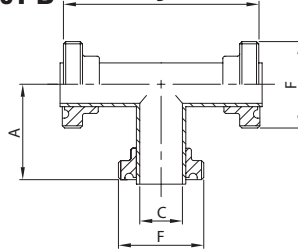
200 B



DN	A	B	C	D	gr
25	44,0	88,0	22,4	25,4	170
38	64,0	128,0	35,1	38,1	290
51	89,0	178,0	47,8	50,8	420
63	114,0	228,0	60,5	63,5	610
76	134,0	268,0	72,9	76,2	930
101	174,0	348,0	97,6	101,6	1.620

TEE BF/BF/BF. MT.
TEE MP/MP/MP. ED.
TÉ PF/PF/PF. DN.
TE M./M./M. MD.

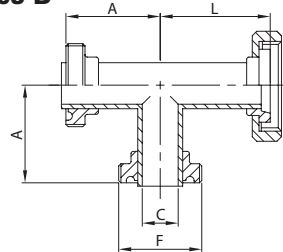
201 B



DN	A	B	C	F	gr
25	60,0	120,0	22,4	46-8	490
38	80,0	160,0	35,1	58-8	785
51	105,0	210,0	47,8	73-6	1.175
63	130,0	260,0	60,5	85-6	1.550
76	150,0	300,0	72,9	98-6	2.125
101	190,0	380,0	97,6	123-6	3.440

TEE BF/BF/BL. G. MT.
TEE MP/MP/L. N. ED.
TÉ PF/PF/PL. E. DN.
TE M./M./C.T. MD.

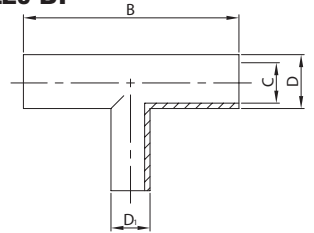
203 B



DN	A	C	F	L	gr
25	60,0	22,4	46-8	70,0	575
38	80,0	35,1	58-8	90,0	925
51	105,0	47,8	73-6	115,0	1.350
63	130,0	60,5	85-6	140,0	1.910
76	150,0	72,9	98-6	160,0	2.470
101	190,0	97,6	123-6	200,0	3.820

TEE RIDOTTO EL.
REDUCING TEE PE.
TÉ RÉDUIT BL.
TE REDUCIDA EL.

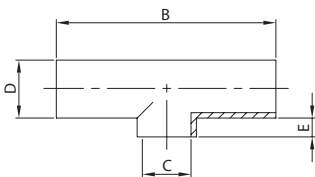
220 BI



DN	B	C	D	D ₁	gr
38/25	170,0	35,1	38,1	25,4	320
51/25	220,0	47,8	50,8	25,4	470
51/38	220,0	47,8	50,8	38,1	470
63/38	270,0	60,5	63,5	38,1	680
63/51	270,0	60,5	63,5	50,8	680
76/38	310,0	72,9	76,2	38,1	1.030
76/51	310,0	72,9	76,2	50,8	1.030
76/63	310,0	72,9	76,2	63,5	1.030
101/63	390,0	97,6	101,6	63,5	1.850
101/76	390,0	97,6	101,6	76,2	1.850

TEE A SALDARE
WELDING TEE
TÉ À SOUDER
TE SOLDAR

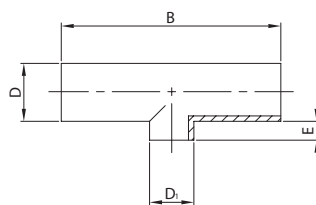
240 BI



DN	B	C	D	E	gr
25	88,0	22,4	25,4	3,0	190
38	128,0	35,1	38,1	3,0	320
51	178,0	47,8	50,8	3,0	470
63	228,0	60,5	63,5	3,0	680
76	268,0	72,9	76,2	3,0	1.030
101	348,0	97,6	101,6	3,0	1.850

TEE RIDOTTO SR.
REDUCING TEE WG.
TÉ RÉDUIT SR.
TE REDUCIDA SR.

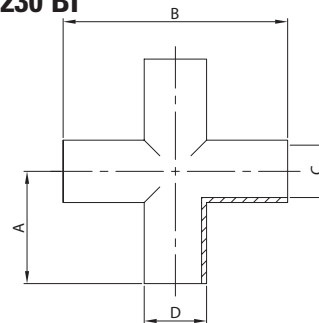
250 BI



DN	B	D	D ₁	E	gr
38/25	128,0	38,1	25,4	3,0	320
51/25	178,0	50,8	25,4	3,0	470
51/38	178,0	50,8	38,1	3,0	470
63/38	228,0	63,5	38,1	3,0	680
63/51	228,0	63,5	50,8	3,0	680
76/38	228,0	76,2	38,1	3,0	1.030
76/51	268,0	76,2	50,8	3,0	1.030
76/63	268,0	76,2	63,5	3,0	1.030
101/63	348,0	101,6	63,5	3,0	1.850
101/76	348,0	101,6	76,2	3,0	1.850

CROCE A MANDRINARE
EXPANDING CROSS
CROIX À DUDGEONNER
CRUZ MANDRILAR

230 BI



DN	A	B	C	D	gr
25	65,0	130,0	22,4	25,4	253
38	85,0	170,0	35,1	38,1	428
51	110,0	220,0	47,8	50,8	628
63	135,0	270,0	60,5	63,5	908
76	155,0	310,0	72,9	76,2	1.376
101	195,0	390,0	97,6	101,6	2.500



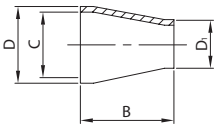
RIDUZIONE CONC. SR.
WG. CONC. REDUCER
RÉDUCTION CONC. SR.
REDUCCIÓN CONC. SR.

RIDUZIONE CONC. EL.
CONC. REDUCER PE.
RÉDUCTION CONC. BL.
REDUCCIÓN CONC. EL.

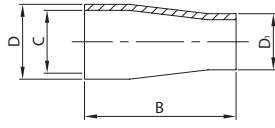
RID. CONC. BF./BF. MT.
CONC. RED. MP./MP. ED.
RÉD. CONC. PF./PF. DN.
RED. CONC. M./M. MD.

RID. CONC. BL.G./BL.G. MT.
CONC. RED. L.N./L.N. ED.
RÉD. CONC. PL.E./PL.E. DN.
RED. CONC. C.T./C.T. MD.

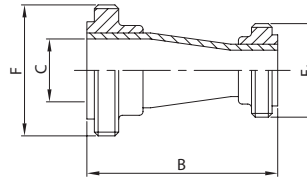
169 L



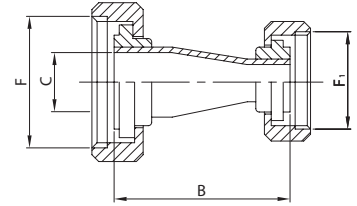
170 L



171 I



172 I



DN	B	C	D	D ₁	gr
38/25	67,0	35,1	38,1	25,4	80
51/25	67,0	47,8	50,8	25,4	100
51/38	67,0	47,8	50,8	38,1	100
63/38	67,0	60,2	63,5	38,1	140
63/51	67,0	60,2	63,5	50,8	160
76/38	67,0	72,9	76,2	38,1	160
76/51	67,0	72,9	76,2	50,8	180
76/63	67,0	72,9	76,2	63,5	220
101/51	107,0	97,6	101,6	50,8	310
101/63	82,0	97,6	101,6	63,5	300
101/76	67,0	97,6	101,6	76,2	280
104/51	109,0	100,0	104,0	50,8	310
104/63	89,0	100,0	104,0	63,5	300
104/76	67,0	100,0	104,0	76,2	280

DN	B	C	D	D ₁	gr
38/25	97,0	35,1	38,1	25,4	110
51/25	115,0	47,8	50,8	25,4	170
51/38	97,0	47,8	50,8	38,1	150
63/38	115,0	60,2	63,5	38,1	230
63/51	97,0	60,2	63,5	50,8	190
76/38	132,0	72,9	76,2	38,1	300
76/51	115,0	72,9	76,2	50,8	260
76/63	97,0	72,9	76,2	63,5	240
101/51	145,0	97,6	101,6	50,8	590
101/63	120,0	97,6	101,6	63,5	580
101/76	120,0	97,6	101,6	76,2	580
104/51	155,0	100,0	104,0	50,8	600
104/63	140,0	100,0	104,0	63,5	590
104/76	127,0	100,0	104,0	76,2	580

DN	B	C	F	F ₁	gr
38/25	97,0	35,1	50-8	37-8	260
51/25	115,0	47,8	64-8	37-8	340
51/38	97,0	47,8	64-8	50-8	370
63/38	115,0	60,5	77-8	50-8	525
63/51	97,0	60,5	77-8	64-8	505
76/38	132,0	72,9	91-8	50-8	660
76/51	115,0	72,9	91-8	64-8	640
76/63	97,0	72,9	91-8	77-8	695
101/63	120,0	97,6	118-8	77-8	1.305
101/76	120,0	97,6	118-8	91-8	1.360

DN	B	C	F	F ₁	gr
38/25	97,0	35,1	50-8	37-8	650
51/25	115,0	47,8	64-8	37-8	875
51/38	97,0	47,8	64-8	50-8	965
63/38	115,0	60,5	77-8	50-8	1.295
63/51	97,0	60,5	77-8	64-8	1.420
76/38	132,0	72,9	91-8	50-8	1.515
76/51	115,0	72,9	91-8	64-8	1.640
76/63	97,0	72,9	91-8	77-8	1.870
101/63	120,0	97,6	118-8	77-8	2.800
101/76	120,0	97,6	118-8	91-8	2.940

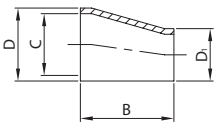
RIDUZIONE ECC. SR.
WG. ECC. REDUCER
RÉDUCTION EXC. SR.
REDUCCIÓN EXC. SR.

RIDUZIONE ECC. EL.
ECC. REDUCER PE.
RÉDUCTION EXC. BL.
REDUCCIÓN EXC. EL.

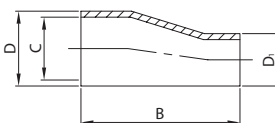
RID. ECC. BF./BF. MT.
ECC. RED. MP./MP. ED.
RÉD. EXC. PF./PF. DN.
RED. EXC. M./M. MD.

RID. ECC. BL.G./BL.G. MT.
ECC. RED. L.N./L.N. ED.
RÉD. EXC. PL.E./PL.E. DN.
RED. EXC. C.T./C.T. MD.

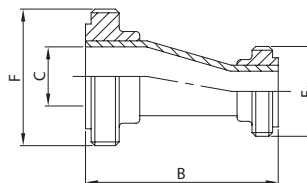
179 L



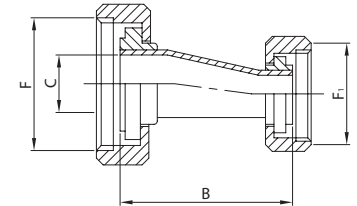
180 L



181 I



182 I



DN	B	C	D	D ₁	gr
38/25	67,0	35,1	38,1	25,4	80
51/25	73,0	47,8	50,8	25,4	100
51/38	67,0	47,8	50,8	38,1	100
63/38	71,0	60,2	63,5	38,1	140
63/51	67,0	60,2	63,5	50,8	160
76/38	80,0	72,9	76,2	38,1	160
76/51	67,0	72,9	76,2	50,8	180
76/63	67,0	72,9	76,2	63,5	220
101/51	110,0	97,6	101,6	50,8	310
101/63	88,0	97,6	101,6	63,5	300
101/76	67,0	97,6	101,6	76,2	280
104/51	115,0	100,0	104,0	50,8	310
104/63	88,0	100,0	104,0	63,5	300
104/76	67,0	100,0	104,0	76,2	280

DN	B	C	D	D ₁	gr
38/25	104,0	35,1	38,1	25,4	125
51/25	120,0	47,8	50,8	25,4	170
51/38	105,0	47,8	50,8	38,1	160
63/38	130,0	60,2	63,5	38,1	200
63/51	103,0	60,2	63,5	50,8	220
76/38	139,0	72,9	76,2	38,1	300
76/51	126,0	72,9	76,2	50,8	280
76/63	105,0	72,9	76,2	63,5	250
101/51	150,0	97,6	101,6	50,8	590
101/63	143,0	97,6	101,6	63,5	670
101/76	128,0	97,6	101,6	76,2	630
104/51	148,0	100,0	104,0	50,8	600
104/63	145,0	100,0	104,0	63,5	590
104/76	128,0	100,0	104,0	76,2	630

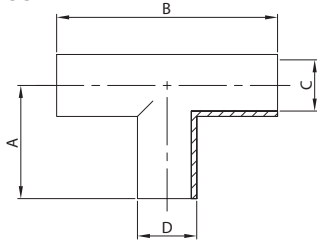
DN	B	C	F	F ₁	gr
38/25	104,0	35,1	50-8	37-8	275
51/25	126,0	47,8	64-8	37-8	340
51/38	105,0	47,8	64-8	50-8	380
63/38	130,0	60,5	77-8	50-8	495
63/51	103,0	60,5	77-8	64-8	535
76/38	148,0	72,9	91-8	50-8	680
76/51	126,0	72,9	91-8	64-8	660
76/63	105,0	72,9	91-8	77-8	705
101/63	143,0	97,6	118-8	77-8	1.385
101/76	128,0	97,6	118-8	91-8	1.410

DN	B	C	F	F ₁	gr
38/25	104,0	35,1	50-8	37-8	665
51/25	126,0	47,8	64-8	37-8	875
51/38	105,0	47,8	64-8	50-8	975
63/38	130,0	60,5	77-8	50-8	1.265
63/51	103,0	60,5	77-8	64-8	1.450
76/38	148,0	72,9	91-8	50-8	1.535
76/51	126,0	72,9	91-8	64-8	1.660
76/63	105,0	72,9	91-8	77-8	1.880
101/63	143,0	97,6	118-8	77-8	2.880
101/76	128,0	97,6	118-8	91-8	2.990



TEE A MANDRINARE
EXPANDING TEE
TÉ À DUDGEONNER
TE MANDRILAR

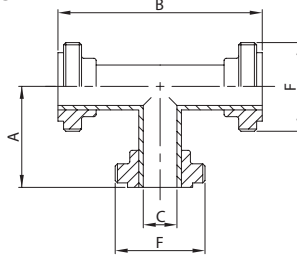
200 I



DN	A	B	C	D	gr
25	65,0	130,0	22,4	25,4	190
38	85,0	170,0	35,1	38,1	320
51	110,0	220,0	47,8	50,8	470
63	135,0	270,0	60,5	63,5	680
76	155,0	310,0	72,9	76,2	1.030
101	195,0	390,0	97,6	101,6	1.850

TEE BF/BF/BF. MT.
TEE MP/MP/MP. ED.
TÉ PF/PF/PF. DN.
TE M./M./M. MD.

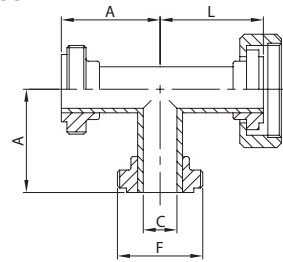
201 I



DN	A	B	C	F	gr
25	65,0	130,0	22,4	37-8	340
38	85,0	170,0	35,1	50-8	620
51	110,0	220,0	47,8	64-8	830
63	135,0	270,0	60,5	77-8	1.265
76	155,0	310,0	72,9	91-8	1.810
101	195,0	390,0	97,6	118-8	3.410

TEE BF/BF/BL. G. MT.
TEE MP/MP/L. N. ED.
TÉ PF/PF/PL. E. DN.
TE M./M./C. T. MD.

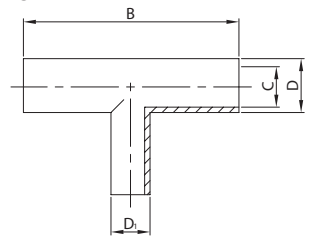
203 I



DN	A	C	F	L	gr
25	65,0	22,4	37-8	65,0	505
38	85,0	35,1	50-8	85,0	845
51	110,0	47,8	64-8	110,0	1.200
63	135,0	60,5	77-8	135,0	2.200
76	155,0	72,9	91-8	155,0	2.440
101	195,0	97,6	118-8	195,0	4.360

TEE RIDOTTO EL.
REDUCING TEE PE.
TÉ RÉDUIT BL.
TE REDUCIDA EL.

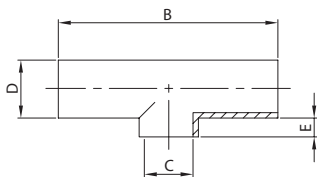
220 BI



DN	B	C	D	D ₁	gr
38/25	170,0	35,1	38,1	25,4	320
51/25	220,0	47,8	50,8	25,4	470
51/38	220,0	47,8	50,8	38,1	470
63/38	270,0	60,5	63,5	38,1	680
63/51	270,0	60,5	63,5	50,8	680
76/38	310,0	72,9	76,2	38,1	1.030
76/51	310,0	72,9	76,2	50,8	1.030
76/63	310,0	72,9	76,2	63,5	1.030
101/63	390,0	97,6	101,6	63,5	1.850
101/76	390,0	97,6	101,6	76,2	1.850

TEE A SALDARE
WELDING TEE
TÉ À SOUDER
TE SOLDAR

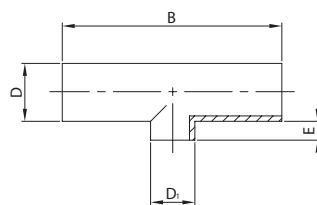
240 BI



DN	B	C	D	E	gr
25	88,0	22,4	25,4	3,0	190
38	128,0	35,1	38,1	3,0	320
51	178,0	47,8	50,8	3,0	470
63	228,0	60,5	63,5	3,0	680
76	268,0	72,9	76,2	3,0	1.030
101	348,0	97,6	101,6	3,0	1.850

TEE RIDOTTO SR.
REDUCING TEE WG.
TÉ RÉDUIT SR.
TE REDUCIDA SR.

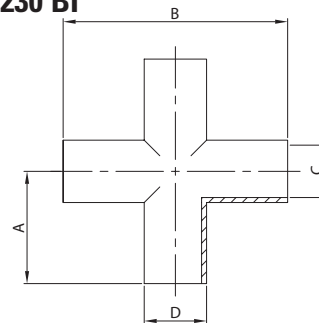
250 BI



DN	B	D	D ₁	E	gr
38/25	128,0	38,1	25,4	3,0	320
51/25	178,0	50,8	25,4	3,0	470
51/38	178,0	50,8	38,1	3,0	470
63/38	228,0	63,5	38,1	3,0	680
63/51	228,0	63,5	50,8	3,0	680
76/38	228,0	76,2	38,1	3,0	1.030
76/51	268,0	76,2	50,8	3,0	1.030
76/63	268,0	76,2	63,5	3,0	1.030
101/63	348,0	101,6	63,5	3,0	1.850
101/76	348,0	101,6	76,2	3,0	1.850

CROCE A MANDRINARE
EXPANDING CROSS
CROIX À DUDGEONNER
CRUZ MANDRILAR

230 BI



DN	A	B	C	D	gr
25	65,0	130,0	22,4	25,4	253
38	85,0	170,0	35,1	38,1	428
51	110,0	220,0	47,8	50,8	628
63	135,0	270,0	60,5	63,5	908
76	155,0	310,0	72,9	76,2	1.376
101	195,0	390,0	97,6	101,6	2.500

