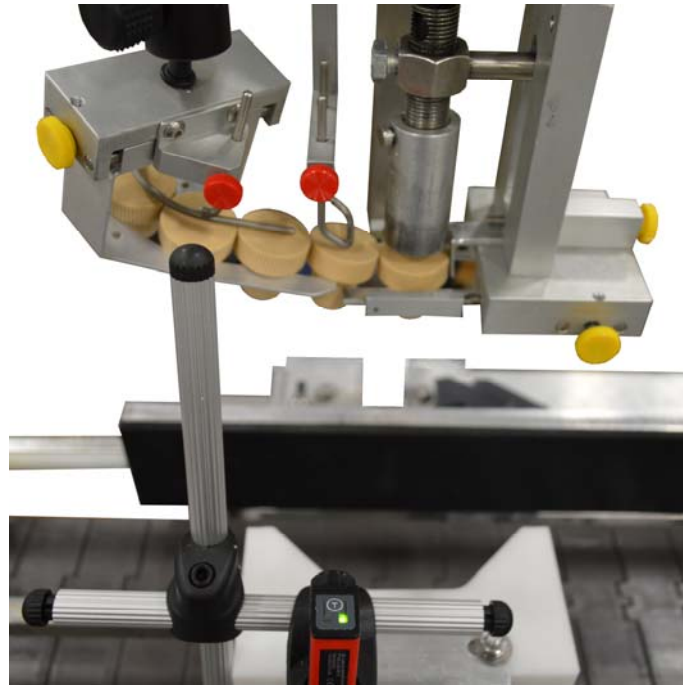


# IN-LINE

Labeling Equipment, Inc.

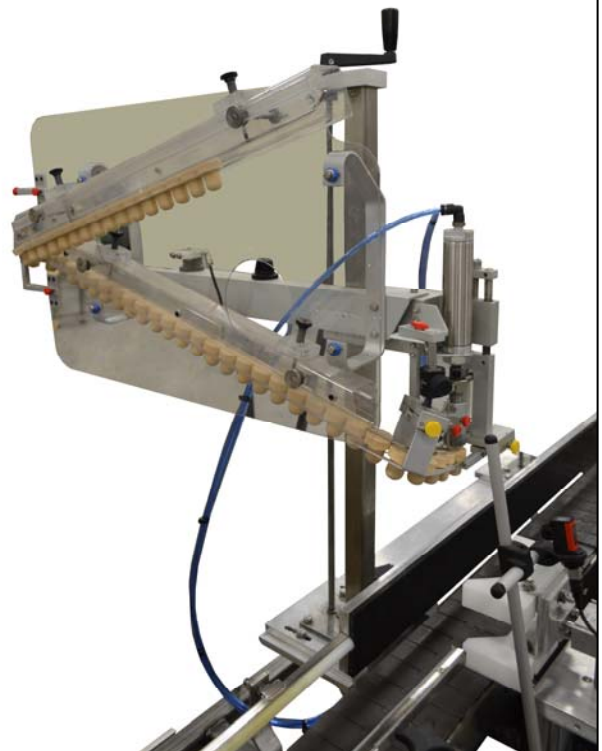
7282 Spa Road North Charleston, SC 29418  
Phone: (843)569-2530 Toll Free: (800)465-4630 Fax: (843)569-2531



## Automated Cork Inserter

By integrating an automatic conveyor, pneumatic gripper, and control system, a semi-automatic cork inserter, such as the Model "A" made by CCR Engineering, can be converted to an automatic cork inserter. As bottles transfer on to the conveyor, each bottle is detected by the photoeye (supplied with machine), and then stopped and positioned by the pneumatic gripper to the spot where the cork can be inserted. The control system then sends a signal to the corker and activates it to insert a cork. A delay then allows the cork to be fully inserted, and then the completed bottle is released for the next bottle to enter. Simply reload the chute as corks are consumed and the machine does the rest!

The machine comes with a V-block, which allows centering of round containers from 2 inches to 3 1/2 inches. Square or rectangular bottles (or smaller/larger diameter rounds) require custom gripper plates for the machine. Please contact us for further information.



# IN-LINE

Labeling Equipment, Inc.



## Specifications

Bottle Diameter	2 to 3 1/2 inches
Conveyor Speed	variable to 900 inches per minute
Electrical	110V 1 PH, 5 amps
Compressed Air	1 cfm, 65 psi clean, dry air
Max Rate	30 bottles per minute
Interface	Touchscreen operator interface with adjustable delays included.