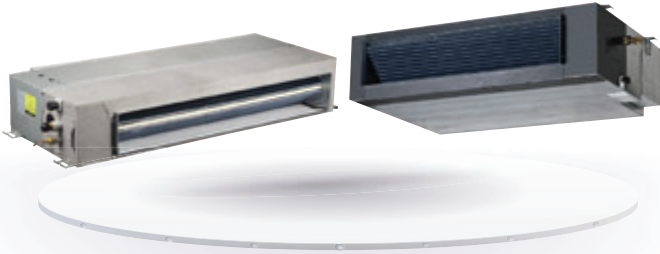


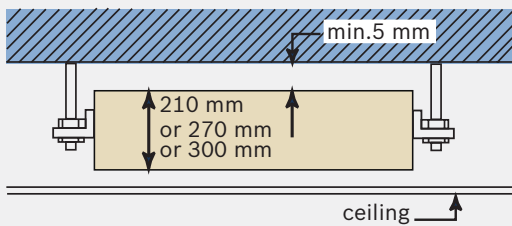
# Duct Type (Low&Medium Static Pressure)



-  Auto Restart
-  Fresh Air
-  Follow Me
-  Anti-Cold Air Function
-  Built-in Drain Pump
-  Wired Controller
-  Auto Addressing
-  Super High Air Flow
-  Connectable To Duct

## Compact size

Only 210 mm (15~71 models) or 270 mm (80 to 112 models) or 300 mm (140 model) in height.



## External static pressure

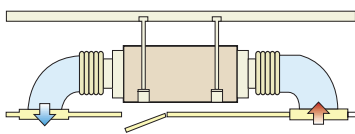
Four speed fan motor (Super high speed is optional).

Change the wiring connection from 'SH' to 'H' to change the ESP.

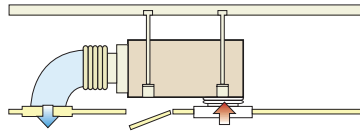
## Convenient installation

The EXV is fixed inside of the indoor unit. Standard filter is housed in an aluminum frame, which is removable from the bottom in the downward direction. Suction chamber is included as standard equipment. Fresh air hole, air inlet/outlet flange are standard for easy duct connection. A rear air inlet is standard and an inlet at the bottom is optional. Both use the same connectable duct.

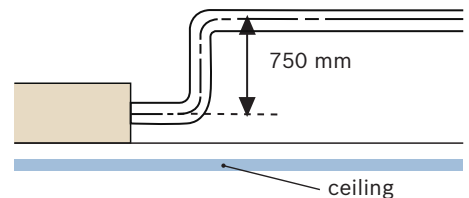
air intake from back



air intake from below



drain pump as standard



## Flexible control and easy maintenance

Standard wired remote controller WRC-HP. Standard functional ports are included such as Remote On/Off Dry contact switch and Alarm signal output (220 V).

Model		SLPD15-1	SLPD22-1	SLPD28-1	SLPD36-1	SLPD45-1	SLPD56-1
<b>Power supply</b>	V/Ph/Hz	220-240/1/50					
<b>Cooling capacity</b>	kW	1.5	2.2	2.8	3.6	4.5	5.6
	kcal/h	1,290	1,900	2,400	3,100	3,900	4,800
	Btu/h	5,100	7,500	9,600	12,300	15,400	19,100
<b>Heating capacity</b>	kW	1.7	2.6	3.2	4.0	5.0	6.3
	kcal/h	1,500	2,200	2,800	3,400	4,300	5,400
	Btu/h	5,800	8,900	10,900	13,600	17,100	21,500
<b>Rated input</b>	Cooling	W	56	57	57	61	98
	Heating	W	56	57	57	61	98
<b>Rated current</b>	Cooling	A	0.31	0.31	0.31	0.33	0.36
	Heating	A	0.31	0.31	0.31	0.33	0.36
<b>Airflow rate (SH/M/L)</b>	m <sup>3</sup> /h	588 (30 pa)/ 538/456/375	588 (30 pa)/ 538/456/375	588 (30 pa)/ 538/456/375	614 (30 pa)/ 597/514/429	763 (30 pa)/ 811/684/575	763 (30 pa)/ 811/684/575
<b>ESP (external static pressure)</b>	Pa	10 (10-30)	10 (10-30)	10 (10-30)	10 (10-30)	10 (10-30)	10 (10-30)
<b>Sound pressure level (H/M/L)</b>	dB(A)	35.8/34.6/31.4	36/35/32	37/35/32	38.6/37.5/33.8	39/37.9/34	39/37.9/34
<b>Refrigerant</b>	Type	R-410A	R-410A	R-410A	R-410A	R-410A	R-410A
	Control method	EXV	EXV	EXV	EXV	EXV	EXV
<b>Indoor Unit</b>	Net dim. (W×H×D)	mm	740×210×500	740×210×500	740×210×500	740×210×500	960×210×500
	Gross dim. (W×H×D)	mm	870×285×525	870×285×525	870×285×525	870×285×525	1,115×285×525
	Net/Gross	kg	17.5/20.5	17.5/20.5	17.5/20.5	17.5/20.5	22.5/26
<b>Piping connections</b>	L (flare)	mm	Φ6.35	Φ6.35	Φ6.35	Φ6.35	Φ6.35
	G (flare)	mm	Φ12.7	Φ12.7	Φ12.7	Φ12.7	Φ12.7
	Drain piping	mm	OD Φ25	OD Φ25	OD Φ25	OD Φ25	OD Φ25
<b>Standard Controller</b>		Wired Remote Controller WRC-HP (6 meters connection wire)					

Model		SLPD71-1	MPD80-1	MPD90-1	MPD112-1	MPD140-1	
<b>Power supply</b>	V/Ph/Hz	220-240/1/50					
<b>Capacity</b>	Cooling	kW	7.1	8.0	9.0	11.2	14.0
		kcal/h	6,100	6,900	7,700	9,600	12,000
		Btu/h	24,200	27,300	30,700	38,200	47,800
	Heating	kW	8.0	9.0	10.0	12.5	15.5
		kcal/h	6,900	7,700	8,600	10,800	13,300
		Btu/h	27,300	30,700	34,100	42,700	52,900
<b>Power (Cooling)</b>	Input	W	105	198	200	313	274
	Rated Current	A	0.47	1.0	1.0	1.8	1.55
<b>Power (Heating)</b>	Input	W	105	198	200	313	274
	Rated Current	A	0.47	1.0	1.0	1.8	1.55
<b>Indoor air flow (SH/H/M/L)</b>	m <sup>3</sup> /h	1,127 (30 pa)/ 1,029/934/781	1,388 (50 pa)/ 1,345/1,165/1,013	1,388 (50 pa)/ 1,345/1,165/1,013	1,851 (80 pa)/ 1,800/1,556/1,400	1,745 (100 pa)/ 1,905/1,636/1,400	
<b>ESP (external static pressure)</b>	Pa	10 (10-30)	20 (10-50)	20 (10-50)	40 (10-80)	40 (10-100)	
<b>Sound pressure level (H/M/L)</b>	dB(A)	41.4/39/35	45.4/39.8/37	45.4/39.8/37	48.0 /41.9/38	47.7/43.2/39.0	
<b>Refrigerant</b>	Type	R-410A	R-410A	R-410A	R-410A	R-410A	
	Control method	EXV	EXV	EXV	EXV	EXV	
<b>Indoor Unit</b>	Net dim. (W×H×D)	mm	1,180×210×500	1,180×270×775	1,230×270×775	1,230×270×775	
	Gross dim. (W×H×D)	mm	1,335×285×525	1,355×350×795	1,355×350×795	1,355×350×795	
	Net/Gross	kg	28/31.5	38/46.5	40/48	40/48	
<b>Piping connections</b>	L (flare)	mm	Φ9.53	Φ9.53	Φ9.53	Φ9.53	
	G (flare)	mm	Φ15.9	Φ15.9	Φ15.9	Φ15.9	
	Drain piping	mm	OD Φ25	OD Φ25	OD Φ25	OD Φ25	
<b>Standard Controller</b>		Wired Remote Controller WRC-HP (6 meters connection wire)					

**Notes:**

- Nominal cooling capacities are based on the following conditions: return air temperature.: 27°C DB, 19°C WB, outdoor temperature.: 35°C DB, equivalent ref. Piping: 8 m (horizontal)
  - Nominal heating capacities are based on the following conditions: return air temperature.: 20°C DB, outdoor temperature.: 7°C DB, 6°C WB, equivalent ref. Piping: 8 m (horizontal)
  - Sound level is measured at 1.4 m below the air outlet.
- External static pressure is based on high speed indoor air flow.