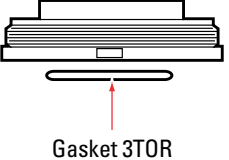
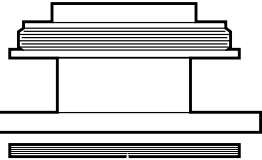
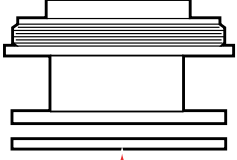


FUNCTION

Our 3" DOT 407 Vents allow you to upgrade virtually any MC 307 or MC 312 tank to DOT 407 or DOT 412 venting. All the benefits of the 400 Series Vents without expensive hot-work. Flow rates are slightly less than our standard DOT 407 Vents, but are more than sufficient for most tanks. **See the table below for specific flow rates.**

The stainless steel valve seat seals on a Teflon® encapsulated silicone "O" Ring. This "O" Ring provides complete chemical resistance and a bubble-tight seal to meet the latest DOT requirements. The unit also meets the surge requirements of 178.345-10 (b) (3).

Styles	Description
<p>402018</p>  <p>Gasket 3TOR</p>	<p>DOT3X407T</p> <p>Vent with a 3" N.P.S. female pipe thread. Attaches to a 3" pipe nipple and seals against a solid Teflon® "O" Ring Gasket.</p>
<p>402020</p>  <p>Gasket 3-CFE</p>	<p>DOT3X407F</p> <p>Vent to mount on a 3" TTMA flange. Supplied with a Teflon® envelope flange gasket.</p>
<p>402021</p>  <p>Gasket 402022</p>	<p>DOT3X407AF</p> <p>Vent to mount on a 3" ANSI flange. Supplied with a Teflon® envelope flange gasket and a 1/4" NPT "Tell-Tale" indicator tap.</p>

PERFORMANCE SPECIFICATIONS

MAWP	TEST PRESSURE	FLOW (SCFH)	EXPOSED SURFACE
25	40	372,844	732
25	45	408,485	860
30	45	408,485	860
35	52.5	460,443	1061

MATERIALS OF CONSTRUCTION

All metallic parts	Stainless Steel
"O" Ring	Teflon® encapsulated silicone
Gasket	Teflon®



REPLACEMENT PARTS

The 3" T, F and AF Models are similar in every detail with the only exception being the connection on the lower housing.

When ordering replacement parts, please refer to the exploded view of the vent and order by: quantity, part number, and description (i.e., 6 each of part number 402006L Low Profile Poppet).

ORDERING INFORMATION

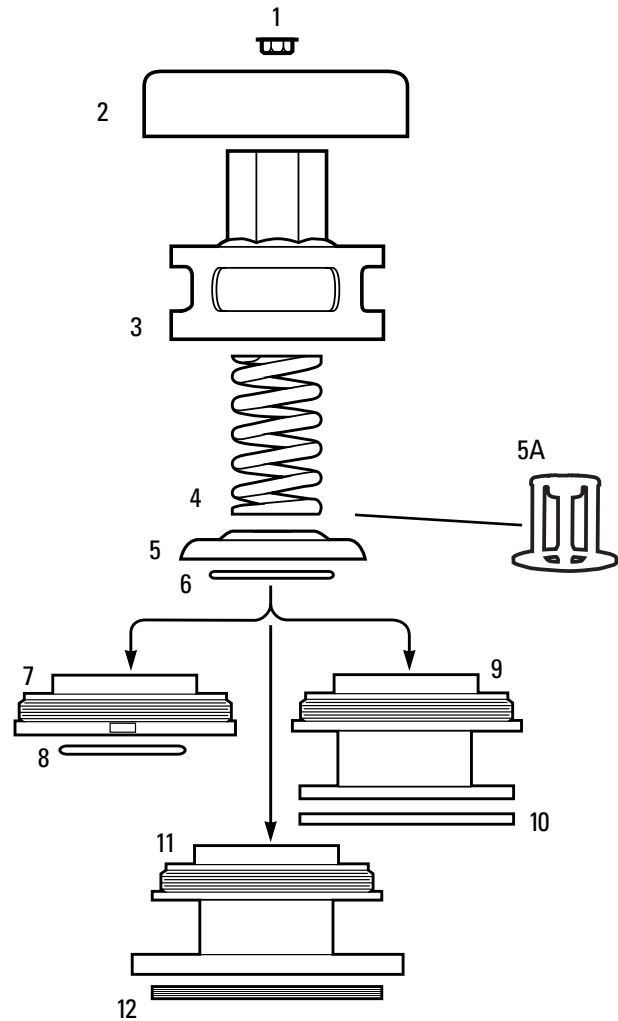
All Vents are designated by the connection style and the Maximum Allowable Working Pressure (MAWP) of the tank that it will be attached to. Order Vents by style-pressure code.

PRESSURE CODE:	MAWP	CODE
	25	(none)
	30	1
	35	2
	Other (Specify)	3

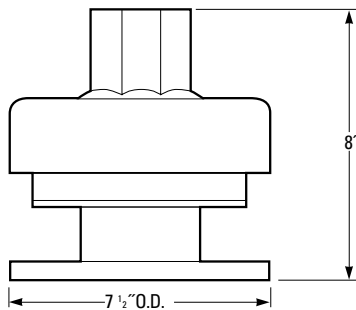
MAINTENANCE INFORMATION

Repair manuals, as well as special tools, are available upon request.

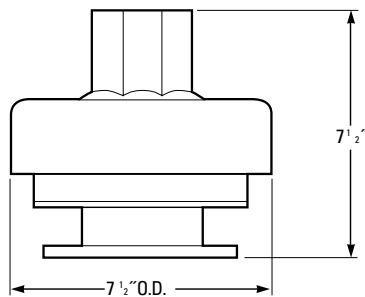
ITEMS	PART NUMBER	DESCRIPTION
1	402019	Plug
2	402003L	Rain Cover
3	402004L	Low Profile Upper Housing Specify MAWP
4	402005 402005HP	Spring (for MAWP < 45 only) Spring (for MAWP > 45 only)
5	402006LN	Low Profile Poppet with Spring Retainer (sold with GB25010)
5A	GB25010	Spring Retainer for Pressure Only Vents (sold separately)
6	402007	Teflon® Silicone "O" Ring
7	402018	3" T Model Lower Housing
8	3TOR	Solid Teflon® "O" Ring Gasket
9	402020	3" F Model Lower Housing (TTMA)
10	3CFE	Teflon® Envelope Flange Gasket (TTMA)
11	402021	3" AF Model Lower Housing
12	402022	Teflon® Envelope Flange Gasket (ANSI)



DOT 3X407AF
(3" ANSI)
Weight:
19 lbs.



DOT 3X407F
(3" TTMA Flange)
Weight:
15 lbs.



DOT 3X407T
Weight: 11 lbs.
Installed
Height:
5 1/4" over the
top of the
pipe nipple

