

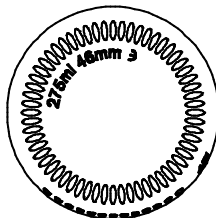
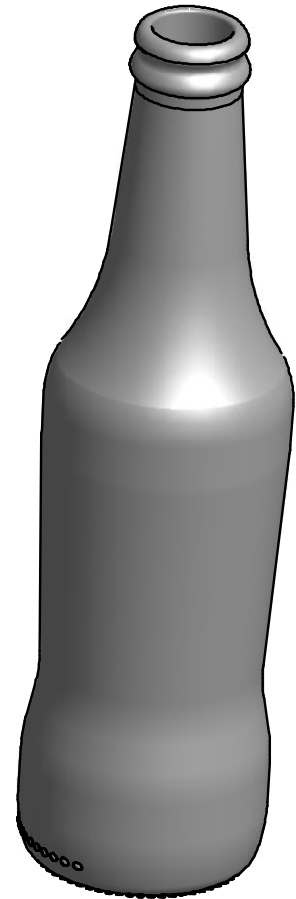
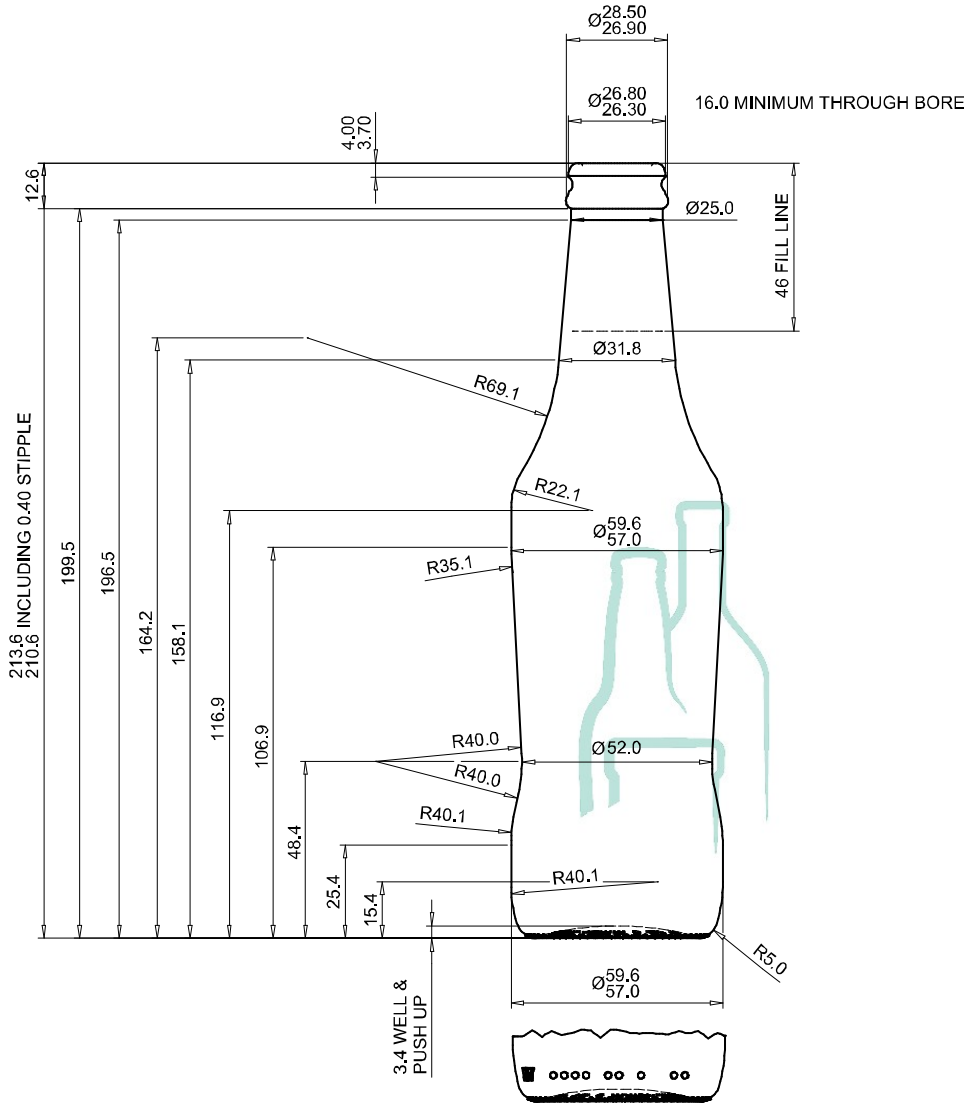


working with you

Alpha Place, Garth Road
Morden, Surrey
SM4 4LX England

(T): +44 208 337 2945
(E): sales@croxsons.com
WWW.CROXSONS.COM

Registered Office as above. Registered No: 71941



NOTE: MAXIMUM INTERNAL PRESSURE
GENERATED BY THE PRODUCT AT 20°C
IS 3.5 BAR & IS NON-REFILLABLE
& IS PASTEURISABLE

DESCRIPTION:	275ml Curvy MCB		ITEM CODE:	CRBC2402	
COLOUR:	Flint		WEIGHT:	218g	
NOMINAL CAPACITY:	275.0ml	BRIMFULL CAPACITY:	291ml ±	CLOSURE:	Crown
HEIGHT:	213.6 ± 0.4mm	DIAMETER:	59.6mm ±	FILL HEIGHT:	46mm
LABEL PANEL:	58.5mm	CARBONATION:	3.5 bar	VACUITY:	5.8%
PALLET HEIGHT:	1.150m	PALLET WEIGHT:	428kg	UNITS PER PALLET:	1900
DRAWING CHECKED:	████████	DATE CHECKED:	18-Apr-13	DRAWING REF:	CRBC2402.03

All measurements are approximate unless tolerances stated, E&OE. Clients should run trials and check physical samples prior to any full scale production.